

There's a plan in here for a life like yours.



Your guide to finding just the right
Individual or Family plan for you.

For Benefit Period:
January 1 to December 31, 2022

HIGHMARK 
DELAWARE

Because Life.™

Go ahead. Get picky about your plan.

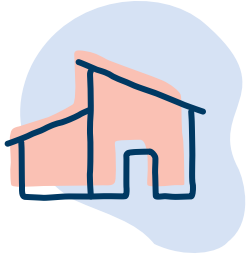
With lots of great coverage options from Highmark, this book will help you find the plan and product that matters most to you.

Looking for something in particular? You can easily navigate through the guide by clicking on the headings in the Table of Contents.

Why choose Highmark?	5
Affordable Care Act basics.....	10
Financial help info.....	12
Enrollment dates	14
Enrollment checklist	15
Product and network highlights.....	16
Plan details	22
Helpful health insurance definitions.....	31
Legal info	32

Why choose a Highmark health plan?

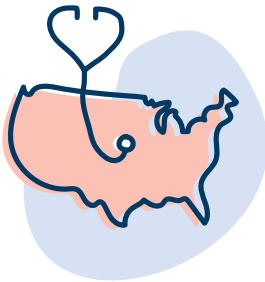
Woah. So many reasons. Here are three big ones right off the top of our heads.



1

Expert care, close to home.

Get easy access to in-network care at hospitals throughout Delaware. In-network facilities are also available in bordering states (Maryland, New Jersey, and Pennsylvania).



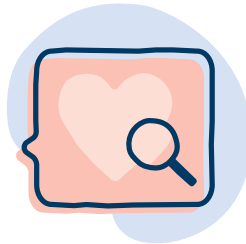
2

Coast-to-coast coverage with BlueCard®.

All of our plans come with access to BlueCard, which connects you to the largest physician and hospital networks in the U.S. with over 1.7 million providers, including 95% of all hospitals.* You're covered in 190 countries, too.

With most Highmark plans, BlueCard also gives you access to routine,** urgent, and emergency care, no matter where you are.

See page 16 for more information on BlueCard.



3

No red tape.

Lose the timewasting of going to an appointment just to get another appointment. **See whichever in-network doctors you want to see — no referral needed.** Or call 1-888-BLUE-428, and we'll find a specialist for you. No hoops, no hoopla.

And that's just for starters.

Turn the page for even more reasons to choose Highmark.

* According to the Blue Cross and Blue Shield Association.

** Certain services may require you to work with your BlueCard-participating provider to obtain prior authorization.

**How easy do we
make it to find care
and get care?**

Almost too easy.



DENTAL AND VISION COVERAGE

All your care, all in one plan.

Healthy eyes and teeth are important parts of your overall health and regular checkups can help you stay ahead of potential problems down the road. That's why all of our plans come with pediatric dental and vision benefits. Some of our plans include adult dental and vision benefits too — so there's no need to purchase separate plans.



VIRTUAL HEALTH

Face to face with a doctor, 24/7.

Need to see a doctor but don't want to leave your couch? Get a diagnosis, treatment plan, or prescription any time, right from your phone or computer. Best of all, the same virtual health services provided by American Well are also available through many in-network providers. That's laid-back-in-a-recliner easy.



BLUE DISTINCTION®

See specialists who get proven results.

Only doctors who consistently deliver safe, effective treatments make our Blue Distinction list. When you use our Find a Doctor tool, a special logo will be by their name, so you can cherry-pick a top-performing specialist for any care you need.

**How simple is it
for you to get
answers and
reach your goals?**

Super simple.



THE HIGHMARK APP AND MEMBER WEBSITE

Your entire plan at your fingertips.

No more searching for old files or waiting on snail mail. Your digital ID card, Find a Doctor tool, deductible progress, and claims status are all available via the Highmark Plan app (available on Google Play or in the Apple App Store) or online at highmarkbcbsde.com.



MY CARE NAVIGATORSM

Your appointments, booked for you.

It's as simple as calling 1-888-BLUE-428. We'll help you find the in-network doctor you need and reserve some space on their calendar for a checkup. Which means less on-hold music for you.



BLUES ON CALLSM

Answers from a health pro, 24/7.

Medical concerns during off hours? Just call 1-888-BLUE-428 to get support from a registered nurse or a health coach any time and put your worries to bed.



WELLNESS

Personalized support for health goals.

Looking to lose weight? Quit smoking? Be more active? Get guidance based on your lifestyle, trackers to measure your progress, resources like Sharecare[®], and access to experienced wellness coaches to make healthy choices and keep you motivated. Once you're enrolled, visit mycare.sharecare.com.



BLUE365SM

Discounts to help you stay healthy and active.

From workout gear to gym memberships to healthy meal services, we'll take a little off the top while you're taking a little off your middle. Member-only deals are at blue365deals.com.

**Before we get
much further,
let's cover some
Affordable Care Act
(ACA) essentials.**

ACA basics

Metal levels

ACA plans are broken into four categories based on how you and your plan share the costs of your health care.

Just so you know, metal levels reflect cost-sharing** differences only – which means you get the same quality of care at any level.

	CATASTROPHIC	BRONZE	SILVER	GOLD	EXTRA SAVINGS SILVER	PLATINUM
Premium	low	low	medium	high	medium	highest
Out-of-Pocket Costs	highest	highest	high	medium	low	low
Makes sense if you:	Never use health care services unless it's an emergency. Only available if you're under 30 or have a hardship.	Don't use a lot of health care services and/or want to keep premium payments low.	Are an unsubsidized member who wants to balance premiums with out-of-pocket costs.	Use health care services somewhat frequently and/or want low out-of-pocket costs for most commonly used services.	Are CSR eligible only AND want to balance premiums with out-of-pocket costs.	Use health care services frequently and/or want to keep out of pocket costs low for all services.

Ways to save

Good news: There are two ways available to save for Affordable Care Act (ACA) enrollees.

Advance Premium Tax Credits (APTC), which may be applied – in advance – to lower what you pay each month for your premium on any level Marketplace plan except Catastrophic.

Cost-Sharing Reductions (CSR) will lower out-of-pocket costs that you may pay at the time of service for doctor visits, lab tests, drugs, and other covered services. CSR plans also offer lower deductibles and copays. You can **only** get these savings if you enroll in an “Extra Savings” Silver plan.

You can qualify for both an APTC and CSR, too.

Even better news: Nationally, 4 out of 5 Marketplace enrollees will be able to find a plan for \$10 or less a month with premium tax credits, and over half will be able to find a Silver plan for \$10 or less a month with premium tax credits.

**The portion of health care services that you pay out-of-pocket. This generally includes deductibles, coinsurance, and copayments.

See if you qualify

To see if you're eligible for financial help, locate your qualifying income and household size on the chart below. Then refer to the Standard or Extra Savings plans for your county to find the plans that will reduce how much you pay for care.

If you don't qualify for Cost-Sharing Reductions, you may be eligible for Advance Premium Tax Credits. Please refer to the Standard plan options for your county.

Who Needs Coverage?	What is the income for those covered under health plan?				
	Eligible for Medicaid	Eligible for CSRs and APTCs			Eligible for APTCs
	Medicaid Eligible Range (100-138% or less FPL)	Silver Extra Savings Plans			Standard
		138-149% CSR plans	150-199% CSR plans	200-249% CSR plans	250% or more
Single	Less than \$17,774	\$17,775 - \$19,319	\$19,320 - \$25,759	\$25,760 - \$32,199	\$32,200 or more
Family of 2	Less than \$24,040	\$24,041 - \$26,129	\$26,130 - \$34,839	\$34,840 - \$43,549	\$43,550 or more
Family of 3	Less than \$30,305	\$30,306 - \$32,939	\$32,940 - \$43,919	\$43,920 - \$54,899	\$54,900 or more
Family of 4	Less than \$36,570	\$36,571 - \$39,749	\$39,750 - \$52,999	\$53,000 - \$66,249	\$66,250 or more
Family of 5	Less than \$42,835	\$42,836 - \$46,559	\$46,560 - \$62,079	\$62,080 - \$77,599	\$77,600 or more
Family of 6	Less than \$49,100	\$49,101 - \$59,369	\$53,370 - \$71,159	\$71,160 - \$88,949	\$88,950 or more
Family of 7	Less than \$55,356	\$55,357 - \$60,179	\$60,180 - \$80,239	\$80,240 - \$100,299	\$100,300 or more
Family of 8	Less than \$61,631	\$61,632 - \$66,989	\$66,990 - \$89,319	\$89,320 - \$111,649	\$111,650 or more

*Most individuals and families with household incomes 100% or more of the FPL will qualify for premium tax credits. These credits help lower the cost of health insurance coverage and are based on the second-lowest-cost Silver plan available in your area on the Health Insurance Marketplace. The second-lowest-cost Silver plan is also known as the "benchmark plan." Premium tax credits vary by income. Households with incomes 150% or less of the FPL will pay no premium for the benchmark plan. Those households with annual incomes 400% or more of the FPL will pay no more than 8.5% of their household income on health insurance premiums for the benchmark plan.

*Income below 138% FPL: If your income is below 138% FPL and your state has expanded Medicaid coverage, you qualify for Medicaid based only on your income.

*American Indians and Alaska Natives who are members of federally recognized tribes are eligible for cost-sharing reductions at alternative dollar thresholds.

This chart is only applicable for coverage in 2022 and in the 48 contiguous states and the District of Columbia. For families/households with more than 8 persons, add \$5,220 for each additional person. HHS Poverty Guidelines for 2021 (January 31, 2021). Retrieved from <https://aspe.hhs.gov/poverty-guidelines>.

**Check to see if you qualify for one or both types of help.
Call 855-882-6533.**

ACA plans vs. short-term plans and Health Care Sharing Ministries

In addition to the availability of APTC and CSR, all ACA plans provide coverage for preexisting conditions and the 10 Essential Health Benefits (see page 17). Short-term plans and Health Care Sharing Ministries – which are plans that come with a fixed, limited term – do not. These plans can seem like a cheaper alternative to ACA coverage but often come with hidden costs and exclusions that can make them more expensive in the long run.

Other types of hidden costs in short-term and Health Care Sharing Ministries plans:

	SHORT-TERM PLANS AND HEALTH CARE SHARING MINISTRIES	ACA PLANS
Capped out-of-pocket spending	not included	included
Coverage of 10 Essential Health Benefits	not included	included
No limits on covered doctor visits	not included	included
No dollar limits on covered benefits	not included	included
No dollar limits on prescription drug coverage	not included	included
Coverage for preexisting conditions with no waiting period	not included	included

A listing of the 10 Essential Health Benefits can be found on page 17.



Next, enrollment dates.

There are two different ways you can be eligible to enroll in or change your ACA coverage. One is a fixed period that happens every year. The other is for special cases that can happen any time.

1 EXTENDED OPEN ENROLLMENT PERIOD November 1, 2021 – January 15, 2022

If you sign up by December 15, 2021,
your plan takes effect on January 1, 2022.

If you sign up between December 16, 2021
and January 15, 2022, your plan takes effect
on February 1, 2022.



2 SPECIAL ENROLLMENT PERIODS Can happen any time throughout the year

Outside the Open Enrollment Period, you can only get or change coverage if you have a qualifying life event. Examples include losing your existing coverage, a new addition to the family, getting married, or moving to a new area where you can't keep your current plan. A Special Enrollment Period only lasts 60 days from the qualifying life event.

If you think you're eligible for a Special Enrollment Period, you may be asked to submit documents to verify it. You can go to [discoverhighmark.com](https://www.discoverhighmark.com) for more information.

Finally, your ACA Enrollment Checklist.

Here's the info you'll need for each person who will be covered on your plan.

- Date of birth
- Social Security number
(or legal immigrant documents)
- Income documentation for all household members, even if they won't be covered by the plan
(pay stubs, W-2 forms, or wage and tax statements)
- Current health insurance policy numbers (if applicable)
- Info on any health insurance you or your family could get from your job

All set? Great. Let's dig into the details for 2022 — and find you the plan with the benefits and features that matter most to you.

2022 Highmark product and network highlights

Now that we've gotten the preliminaries out of the way, let's take a look at the products and networks available in your area in 2022.

Cue the highlight reel.

With Highmark, you get all the essentials — and so much more.

First, you get access to the 10 Essential Health Benefits — plus coverage for preexisting conditions. They include:

- Outpatient care
- Emergency services
- Hospitalization (like surgery and overnight stays)
- Pregnancy, maternity, and newborn care
- Mental health and substance use disorder services
- Prescription drugs
- Rehabilitative and habilitative services and devices
- Laboratory services
- Preventive and wellness services and chronic disease management
- Pediatric services, including dental and vision care

But Highmark goes above and beyond.

Here are just a few of the awesome benefits you'll find in some of our plans this year.* Go ahead. Start circling the ones you want.

- Low office visit copay
- \$0 prescription copays for Tier 1 drugs
- Free preventive vaccines,** tests, and screenings***
- Adult dental and vision coverage
- Predictable copays that start on day 1
- Plans with \$0 deductibles
- Prescription drug coverage that starts day 1, no deductible to meet
- Enhanced resources for managing chronic conditions
- Potential tax-free savings with a Health Savings Account****
 - Money can go in tax-free and lower your taxable income.
 - Money comes out tax-free when used for qualified medical expenses.
 - Interest and earnings on any unused money grows tax-free.
 - Unused money rolls over from year to year.

* Not all plans include these benefits. The availability of benefits depends on your selected plan.

** As listed on the Highmark Preventive Schedule when given at a participating pharmacy.

*** As presented on the Highmark Preventive Schedule. To check the preventive schedule for covered care, visit https://www.highmarkbcbsde.com/pdffiles/Highmark_Preventive_Schedule_2021.pdf

**** Please note: Qualified High Deductible Health Plans may be coupled with a Health Savings Account (HSA). However, certain Cost-Sharing Reductions (CSR) or plan variations of this plan that are offered through the Health Insurance Marketplace are not intended to be used with an HSA. If you have questions, please check with your financial advisor.

my Blue Access PPO

Your choice for comprehensive in-network access throughout Delaware.

With a my Blue Access PPO plan from Highmark Delaware, you have in-network access to high-quality, cost-effective care in Delaware, Maryland, New Jersey, and Pennsylvania, as well as at facilities like ChristianaCare, Bayhealth, Beebe Medical Center, and Nemours/Alfred I. duPont Hospital for Children. With a PPO, you also get the flexibility to see out-of-network providers.

To see if your provider is in network, visit highmarkbcbsde.com and click Find a Doctor or Pharmacy.



Coverage that goes where you go.



Planning to hit the road or travel abroad this year? With BlueCard, your health care benefits go with you — across the country and around the world. We give you access to doctors and hospitals almost everywhere, so you'll have peace of mind that you can always find the care you need. And when you're traveling, BlueCard gives you access to the largest physician and hospital networks in the U.S. with over 1.7 million providers, including 95% of all hospitals.*

Your coverage extends to many top-rated, out-of-state facilities, like:

- Penn Medicine - Hospital of the University of Pennsylvania
- Memorial Sloan Kettering Cancer Center
- Johns Hopkins Hospital
- University of Maryland Medical Center

* According to the Blue Cross Blue Shield Association.

In-network facilities

Facilities
Kent County
Bayhealth Hospital - Kent Campus
New Castle County
ChristianaCare - Christiana Hospital
ChristianaCare - Wilmington Hospital
Delaware Psychiatric Center
Nemours Children's Hospital
Saint Francis Hospital
Select Specialty Hospital - Wilmington
Sussex County
Bayhealth Hospital - Sussex Campus
Beebe Medical Center
TidalHealth - Nanticoke Hospital

Facilities
Additional in-network facilities
The Johns Hopkins Hospital
TidalHealth - Peninsula Regional Medical Center
Memorial Sloan Kettering Cancer Center - Basking Ridge
Children's Hospital of Philadelphia
Einstein Medical Center Philadelphia
Penn Medicine - Hospital of the University of Pennsylvania
Penn Medicine - Pennsylvania Hospital

In addition to the out-of-state hospitals listed here, my Blue Access PPO plans all include all BlueCard providers across the country, as well as other out-of-state hospitals. Please refer to the provider directory for additional out-of-state hospitals. You can find the provider directory at highmarkbcbsde.com under the **Find a Doctor or Pharmacy** tab.

Your Gold 0 plan options

While all of our Gold plans come with a \$0 deductible, there are some differences in copay rates and other benefits from plan to plan. Check out your options below to find the Gold plan that's right for you.

my Blue Access PPO Gold 0

Our my Blue Access PPO Gold 0 plan offers lower copays for care than other metal levels with copays as low as \$20 for office visits. Even better, you'll have predictable copays for almost all services — so you'll know what you owe going in.

my Blue Access PPO Premier Gold 0

my Blue Access PPO Premier Gold 0 plan offers even lower copays on office visits, as low as \$15. Plus lower out-of-pocket costs on covered services and exclusive access to Papa Pals and TruHearing.



Papa Pals

With Papa Pals, each member gets up to 36 hours per year of help with everyday tasks like light cleaning, laundry, grocery shopping, and getting to and from appointments so you have more time to focus on living your best, and healthiest, life. To learn more, visit joinpapa.com/activities/video-visits.



TruHearing

TruHearing™ is a benefit that's exclusive to Premier Gold 0 plans that provides lower copays for hearing aids purchased through the TruHearing Program. Plus, you can receive a hearing evaluation, as well as training, setup, fine-tuning, and adjustments from an in-network TruHearing provider without ever leaving your home. All you need is a smartphone, tablet, or computer. To learn more about TruHearing, visit Highmark-HS.TruHearing.com or refer to your contract.

Plans that include vision and dental



Highmark is making pediatric and adult vision and dental care more accessible. At every metal level, we offer plans with the option to have adult dental and vision included. Pediatric dental and vision benefits are automatically included with every plan.

You can find adult dental and vision benefits on pages 28-30 and pediatric dental and vision benefits at pediatricdentalandvision.com.

Benefits of included vision coverage:

- Free eye exam
- Allowance for glasses or contacts

Our vision plans use the Davis Vision Network — a list of in-network providers can be accessed through highmarkbcbsde.com. To access network providers, click **Health Care Reform Vision Network**.

Benefits of included dental coverage:

- Convenience of only having one bill to pay for medical and dental coverage
- Decreased waiting period
- Two free cleanings

Our plans use the Concordia Advantage network. To find a provider, visit highmarkbcbsde.com and select the **Find a Doctor** or **Pharmacy** tab.

IT PAYS TO HAVE DENTAL COVERAGE

Service	Average cost with dental coverage	Average cost without dental coverage (usual fee)
Exams, cleanings, and X-rays	\$0-37	\$288 ¹
Composite filling	\$71	\$170 ²
Simple extraction	\$33	\$163 ³
Root canal	\$400	\$1,000 ⁴

¹ https://www.dentaly.org/us/oral-hygiene/teeth-cleaning/#How_much_does_a_dental_cleaning_cost, last accessed September 19, 2021
<https://www.dentaly.org/us/panoramic-dental-xray/>, last accessed September 19, 2021

² https://www.dentaly.org/us/tooth-filling/#How_much_do_fillings_cost, last accessed September 20, 2021

³ https://www.dentaly.org/us/tooth-extraction/#How_much_does_tooth_removal_cost_in_the_US, last accessed September 20, 2021

⁴ <https://www.webmd.com/oral-health/guide/dental-root-canals>, last accessed September 20, 2021

Now, let's dig into plan details.

You'll see plan summaries here. If you want any plan's full benefit list, visit [HighmarkSBCs.com](https://www.HighmarkSBCs.com) or get a paper copy by calling 1-833-258-0188 (TTY/TDD 711).



Coverage Level

**Catastrophic
8700**

3 Free PCP visits

**Bronze
6900 HSA**

**Bronze
3800**

**Silver
3250 HSA**

**Silver
2900**

	Catastrophic 8700 3 Free PCP visits	Bronze 6900 HSA	Bronze 3800	Silver 3250 HSA	Silver 2900
Plan Availability	my Blue Access Major Events PPO 8700	my Blue Access PPO Bronze 6900 HSA	my Blue Access PPO Bronze 3800	my Blue Access PPO Silver 3250 HSA	my Blue Access PPO Silver 2900
In-Network Deductible	Individual: \$8,700 Family: \$17,400	Individual: \$6,900 Family: \$13,800	Individual: \$3,800 Family: \$7,600	Individual: \$3,250 Family: \$6,500	Individual: \$2,900 Family: \$5,800
In-Network out-of-pocket Maximum	Individual: \$8,700 Family: \$17,400	Individual: \$6,900 Family: \$13,800	Individual: \$8,700 Family: \$17,400	Individual: \$6,900 Family: \$13,800	Individual: \$7,800 Family: \$15,600
Primary Care Visit	First 3 visits free, then \$0 after deductible	\$0 after deductible	\$90 copay	\$70 after deductible	\$50 copay
Specialist Visit	\$0 after deductible	\$0 after deductible	\$90 copay	\$70 after deductible	\$50 copay
Outpatient Mental Health and Substance Abuse Visits	\$0 after deductible	\$0 after deductible	\$90 copay	\$70 after deductible	\$50 copay
Speech, Physical and Occupational Therapy²	\$0 after deductible	\$0 after deductible	\$17 copay	\$17 after deductible	\$17 copay
Diagnostic Test Lab Services	\$0 after deductible	\$0 after deductible	\$65 copay	\$90 after deductible	\$75 copay
Diagnostic Test X-Rays	\$0 after deductible	\$0 after deductible	\$125 copay	\$90 after deductible	\$75 copay
Urgent Care	\$0 after deductible	\$0 after deductible	\$100 copay	\$140 after deductible	\$100 copay
Emergency Services	\$0 after deductible	\$0 after deductible	50% after deductible	\$750 after deductible	\$750 after deductible
Hospital Inpatient (Including maternity)	\$0 after deductible	\$0 after deductible	50% after deductible	\$900 after deductible	40% after deductible
Pharmacy Summary³	\$0/\$0/\$0/\$0 after deductible	\$0/\$0/\$0/\$0 after deductible	50%/50%/50%/50% after deductible	\$0/\$30/\$150/50% after deductible	\$0/\$50/\$225/50%
Includes Adult Dental and Vision Option⁴	No	No	Yes	No	Yes

Coverage Level

	Silver 2600*	Gold 1400 HSA ^{1*}	Gold 0	Premier Gold 0	Platinum 0
Plan Availability	my Blue Access PPO Silver 2600*	my Blue Access PPO Gold 1400 HSA ^{1*}	my Blue Access PPO Gold 0	my Blue Access PPO Premier Gold 0	my Blue Access PPO Platinum 0
In-Network Deductible	Individual: \$2,600 Family: \$5,200	Individual: \$1,400 Family: \$2,800	Individual: \$0 Family: \$0	Individual: \$0 Family: \$0	Individual: \$0 Family: \$0
In-Network, Out-of-Pocket Maximum	Individual: \$8,500 Family: \$17,000	Individual: \$5,000 Family: \$10,000	Individual: \$7,500 Family: \$15,000	Individual: \$6,500 Family: \$13,000	Individual: \$5,000 Family: \$10,000
Primary Care Visit	\$40 copay	20% after deductible	\$20 copay	\$15 copay	\$5 copay
Specialist Visit	\$40 copay	20% after deductible	\$20 copay	\$15 copay	\$5 copay
Outpatient Mental Health and Substance Abuse Visits	\$40 copay	20% after deductible	\$20 copay	\$15 copay	\$5 copay
Speech, Physical, & Occupational Therapy and Chiropractic Care²	\$17 copay	20% after deductible	\$17 copay	\$15 copay	\$5 copay
Diagnostic Test/Lab Services	\$75 copay	20% after deductible	\$50 copay	\$40 copay	\$10 copay
Diagnostic Test/X-Rays	\$75 copay	20% after deductible	\$50 copay	\$40 copay	\$10 copay
Urgent Care	\$80 copay	20% after deductible	\$40 copay	\$30 copay	\$10 copay
Emergency Services	30% after deductible	20% after deductible	\$300 copay	\$250 copay	\$100 copay
Hospital Inpatient (including Maternity)	30% after deductible	20% after deductible	\$500 copay	\$375 copay	\$250 copay
Pharmacy Summary³	\$0/\$50/\$225/50%	20%/20%/20%/20% after deductible	\$0/\$30/\$150/50%	\$0/\$25/\$75/50%	\$0/\$10/\$50/50%
Includes Adult Dental and Vision Option⁴	Yes	No	Yes	Yes	Yes

* These plans are available directly from Highmark and are not available on the Health Insurance Marketplace. They do not qualify for Advanced Premium Tax Credits or Cost-Sharing Reductions.

¹ This plan has a Non-Embedded deductible. See Disclosures page for more info.

² Limit of 30 combined physical and occupational therapy visits per benefit period. Limit does not apply to the treatment of back pain by chiropractors and physical therapists or to Habilitative services for the treatment of a Mental Health or Substance Abuse diagnosis.

³ Visit [highmarkacaformulary.com](https://www.highmarkacaformulary.com) to view our Formulary and see if your drug is covered, and at which tier.

⁴ See page 28 for Adult Dental and Vision benefit details.

	Income Level		
	138-149% FPL		150-199% FPL
	Coverage Level		
	Silver 100	Silver 0	Silver 700
Plan Availability	my Blue Access PPO Silver Extra Savings 100	my Blue Access PPO Silver Extra Savings 0	my Blue Access PPO Silver Extra Savings 700
In-Network Deductible	Individual: \$100 Family: \$200	Individual: \$0 Family: \$0	Individual: \$700 Family: \$1,400
In-Network out-of-pocket Maximum	Individual: \$1,300 Family: \$2,600	Individual: \$1,200 Family: \$2,400	Individual: \$2,850 Family: \$5,700
Primary Care Visit	\$5 copay	\$1 copay	\$25 copay
Specialist Visit	\$5 copay	\$1 copay	\$25 copay
Outpatient Mental Health and Substance Abuse Visits	\$5 copay	\$1 copay	\$25 copay
Speech, Physical and Occupational Therapy¹	\$5 copay	\$1 copay	\$17 copay
Diagnostic Test Lab Services	\$15 copay	\$5 copay	\$45 copay
Diagnostic Test X-Rays	\$15 copay	\$5 copay	\$45 copay
Urgent Care	\$10 copay	\$5 copay	\$50 copay
Emergency Services	\$100 after deductible	\$75 copay	\$300 after deductible
Hospital Inpatient (Including Maternity)	10% after deductible	\$100 copay	10% after deductible
Pharmacy Summary²	\$0/\$5/\$15/50%	\$0/\$5/\$15/50%	\$0/\$10/\$50/50%
Includes Adult Dental and Vision Option³	Yes	No	Yes

Income Level			
150-199% FPL		200-249% FPL	
Coverage Level			
	Silver 0	Silver 2100	Silver 1050
Plan Availability	my Blue Access PPO Silver Extra Savings 0	my Blue Access PPO Silver Extra Savings 2100	my Blue Access PPO Silver Extra Savings 1050
In-Network Deductible	Individual: \$0 Family: \$0	Individual: \$2,100 Family: \$4,200	Individual: \$1,050 Family: \$2,100
In-Network out-of-pocket Maximum	Individual: \$2,800 Family: \$5,600	Individual: \$6,800 Family: \$13,600	Individual: \$5,800 Family: \$11,600
Primary Care Visit	\$15 copay	\$50 copay	\$60 after deductible
Specialist Visit	\$15 copay	\$50 copay	\$60 after deductible
Outpatient Mental Health and Substance Abuse Visits	\$15 copay	\$50 copay	\$60 after deductible
Speech, Physical and Occupational Therapy¹	\$15 copay	\$17 copay	\$17 after deductible
Diagnostic Test Lab Services	\$35 copay	\$75 copay	\$75 after deductible
Diagnostic Test X-Rays	\$35 copay	\$75 copay	\$75 after deductible
Urgent Care	\$30 copay	\$100 copay	\$120 after deductible
Emergency Services	\$275 copay	\$750 after deductible	\$750 after deductible
Hospital Inpatient (Including Maternity)	\$375 copay	30% after deductible	\$800 after deductible
Pharmacy Summary²	\$0/\$10/\$50/50%	\$0/\$50/\$225/50%	\$0/\$30/\$150/50% after deductible
Includes Adult Dental and Vision Option³	No	Yes	No

¹ Limit of 30 combined physical and occupational therapy visits per benefit period. Limit does not apply to the treatment of back pain by chiropractors and physical therapists or to Habilitative services for the treatment of a Mental Health or Substance Abuse diagnosis.

² Visit highmarkacaformulary.com to view our Formulary and see if your drug is covered, and at which tier.

³ See page 28 for Adult Dental and Vision benefit details.

For all plans with Adult Dental and Vision – these are your vision benefits.

In-network	
Vision Benefits	Frequency - Once Every:
Eye Examination (including dilation when professionally indicated)	12 months
Spectacle Lenses	12 months
Frame	12 months
Contact Lenses (in lieu of eyeglass lenses)	12 months

Copayments	
Eye Examination	\$0
Spectacle Lenses	\$0
Contact Lens Evaluation, Fitting, and Follow-Up Care	n/a

Eyeglass Benefit - Frame		Average Retail Value	
Non-Collection Frame Allowance (Retail):		Up to \$130	Up to \$60
Davis Vision Frame Collection¹ (in lieu of Allowance):	Fashion level	Up to \$125	Included
	Designer level	Up to \$175	\$20 copayment
	Premier level	Up to \$225	\$40 copayment

Eyeglass Benefit - Spectacle Lenses		Average Retail Value	Member Charges
Clear plastic single-vision, lined bifocal, trifocal or lenticular lenses (any Rx)		\$60-\$120	Included
Oversize Lenses		\$20	Included
Tinting of Plastic Lenses		\$20	\$11
Scratch-Resistant Coating		\$25-\$40	Included
Scratch Protection Plan Single Vision		\$60-\$120	\$20
Scratch Protection Plan Multifocal		\$60-\$120	\$40
Polycarbonate Lenses ²		\$60-\$75	\$0 or \$30
Ultraviolet Coating		\$25-\$30	\$12
Standard Anti-Reflective (AR) Coating		\$50-\$70	\$35
Premium AR Coating		\$65-\$90	\$48
Ultra AR Coating		\$100-\$125	\$60
Standard Progressive Lenses		\$150-\$195	\$50
Premium Progressives (Varilux®, etc.)		\$195-\$225	\$90
Ultra Progressive Lenses		\$225-\$300	\$140
Intermediate-Vision Lenses		\$150-\$175	\$30
High-Index Lenses		\$90-\$150	\$55
Polarized Lenses		\$95-\$110	\$75
Plastic Photosensitive Lenses		\$95-\$150	\$65

Contact Lens Benefit (in lieu of eyeglasses)		
Non-Collection Contact Lenses: Materials Allowance		Up to \$85
Collection Contact Lenses¹ (in lieu of Allowance): Materials	Disposable	Covered In Full
	Planned Replacement	Covered In Full
	Evaluation, Fitting, and Follow-up Care	Included
Medically Necessary Contact Lenses (with prior approval)	Materials, Evaluation, Fitting, and Follow-Up Care	Included

¹ Collection is available at most participating independent provider offices. Collection is subject to change. Collection is inclusive of select torics and multifocals.

² Polycarbonate lenses are covered in full for dependent children, monocular patients and patients with prescriptions +/- 6.00 diopters or greater.

One-year eyeglass breakage warranty included.

Adult Vision benefits utilize the Davis Vision Network. There is no out-of-network coverage. Davis Vision is a separate company that administers Highmark vision benefits.

To find a provider in the Davis Vision Network, visit highmarkbcbsde.com and select the **Find a Doctor** or **Pharmacy** tab.

For all plans with Adult Dental and Vision – these are your dental benefits.

Dental Benefits			
Annual Deductible Per Insured Person		\$50 Per Calendar Year	
Annual Deductible Per Insured Family		\$150 Per Calendar Year	
Annual Maximum Per Insured Person		\$1,250	
Covered Services:	Policy Pays		Elimination Period
	In Network	Out of Network	
Oral Evaluations (Exams)	100%	0%	None
Radiographs (All X-Rays)	100%	0%	None
Prophylaxis (Cleanings)	100%	0%	None
Palliative Treatment (Emergency)	100%	0%	None
Sealants	100%	0%	None
Space Maintainers	100%	0%	None
Repairs of Crowns, Inlays, Onlays, Fixed Partial Dentures , and Dentures	80%	0%	6 Months
Basic Restorative (Fillings, etc.)	80%	0%	None
Simple Extractions	80%	0%	6 Months
Surgical Extractions	50%	0%	6 Months
Complex Oral Surgery	50%	0%	6 Months
Endodontics (Root canals, etc.)	50%	0%	6 Months
General Anesthesia and/or Nitrous Oxide and/or IV Sedation	80%	0%	6 Months
Nonsurgical Periodontics	50%	0%	6 Months
Periodontal Maintenance	50%	0%	None
Surgical Periodontics	50%	0%	6 Months
Crowns, Inlays, Onlays	50%	0%	6 Months
Prosthetics (Fixed Partial Dentures, Dentures)	50%	0%	6 Months
Adjustments and Repairs of Prosthetics	80%	0%	None
Implant Services	0%	0%	None
Consultations	100%	0%	None
Orthodontics	0%	0%	None

The percentage in the Policy Pays column is the percentage of the Policy’s Maximum Allowable Charge that the Policy will pay for Covered Services provided by a Participating Dentist. Participating Dentists accept the Maximum Allowable Charge as payment in full.

Adult Dental benefits utilize the Concordia Advantage Network. Members must use a United Concordia provider. There is no Out-of-Network coverage for this benefit. United Concordia Companies, Inc., is a separate company that administers pediatric dental benefits for Highmark Blue Cross Blue Shield Delaware members.

To find a dental provider in the Advantage Network, visit highmarkbcbsde.com and select the **Find a Doctor** or **Pharmacy** tab.

Health care lingo, translated.

When you're choosing plans, you're bound to see certain terms over and over. Here's a cheat sheet for a few of the most important ones.

BlueCard

A program that connects independent Blue Plans across the country. It gives Blue Plan members access to in-network coverage while outside their plan area. The level of coverage depends on your chosen plan.

COINSURANCE

The percentage of total cost of care you may owe for certain covered services after reaching your deductible. For example, if your plan pays 80%, you pay 20%.

COPAY

The set amount you pay for certain covered services, could be \$20 for a doctor visit or \$30 for a specialist visit. If you owe a copay, you must pay it when you check in for your visit.

DEDUCTIBLE

The set amount you pay for covered health services or drug costs before your plan starts paying.

EMERGENCY SERVICES

Care for a condition needing immediate attention to avoid severe harm.

FORMULARY

A list of covered drugs selected by the plan based on certain clinical factors. The list of medicines is sorted by tier. Lower tiers usually mean lower copays.

HABILITATIVE SERVICES

Health care services that help you keep, acquire, or improve skills and functioning for daily living following disease, illness, or injury.

HEALTH SAVINGS ACCOUNT (HSA)

An account to set aside pre-tax money to pay for qualified medical expenses. You can only have an HSA if you have a Qualified High-Deductible Health Plan.

HIGH-DEDUCTIBLE HEALTH PLAN (HDHP)

A plan that usually comes with a lower premium because you pay more for health care services up front before the insurance company starts to pay. These plans are often combined with a health savings account.

IN-NETWORK PROVIDER

A doctor or hospital that has an agreement with the plan and will accept plan allowance plus member copay or coinsurance as payment in full.

OUT-OF-NETWORK PROVIDER

A doctor or hospital that does not have an agreement with the plan and does not have to accept plan allowance as payment in full.

OUT-OF-POCKET MAXIMUM

The most you'd pay for covered care in a benefit period or year. If you reach this amount, your plan pays 100% after that.

PLAN ALLOWANCE

The set amount an in-network provider has agreed to accept for a covered health care service. Member responsibility for the service can be found in the Schedule of Benefits. The plan pays the difference between the plan allowance and the member responsibility. If an out-of-network provider bills for more than the plan allowance, you may have to pay the difference. If your plan does not include out-of-network coverage and you receive care, other than emergency or urgent care, you may be responsible for the entire cost.

PREMIUM

The monthly amount paid for coverage.

PREVENTIVE CARE SERVICES

Routine care like screenings and checkups that help keep you healthy. Refer to the Highmark Preventive Schedule for the list of preventive care services.

PRIMARY CARE PROVIDER (PCP)

The medical professional you see for most of your basic care, like yearly preventive visits and screenings.

QUALIFIED HEALTH PLAN (QHP)

A plan that has been certified by the Health Insurance Marketplace and meets all ACA requirements. That includes providing the 10 Essential Health Benefits and staying inside the limits for deductibles, copays, and out-of-pocket maximums.

REHABILITATIVE SERVICES

Care that helps you keep, get back, or improve skills and functioning after you were sick, hurt, or disabled.

RETAIL CLINIC

Walk-in centers for less complex health needs, generally open in the evenings and on weekends.

TELEMEDICINE

Telemedicine is health care that you get from a doctor remotely via a smart device, computer, or telephone.

URGENT CARE CENTER

A walk-in center for when you have a condition that's serious enough to need care right away, but not serious enough for a trip to the emergency room.

VIRTUAL VISIT

A type of telemedicine that you receive from a PCP or specialist via electronic communications or online videoconferencing.

There's a whole lot of legalese around these plans. We put it all in one place for you.

HIGHMARK DISCLOSURES

Important Benefit Details

***Non-Embedded Family Deductible:** For an agreement covering more than one (1) family member, the family deductible must be satisfied before the plan will begin to pay benefits for covered services for any covered family member. When the family deductible has been satisfied, the family deductible will be considered to have been satisfied for all family members, the plan will begin to pay benefits for covered services for all covered family members for the remainder of the benefit period (January 1, 2022 – December 31, 2022). The family deductible can be met by one family member or a combination of members.

Aggregate/Embedded Family Deductible Plans: For an Agreement covering more than one (1) family member, as each Member satisfies their individual Deductible, the Plan will begin to pay benefits for Covered Services for that Member for the remainder of the Benefit Period (January 1, 2022 – December 31, 2022), whether or not the entire family Deductible has been satisfied. When the family Deductible has been satisfied, the family Deductible will be considered to have been satisfied for all remaining covered family members. Not every individual member must meet the individual deductible for the family deductible to be met and no individual member may satisfy the entire family Deductible.

You are responsible for out-of-pocket costs each benefit period (January 1, 2022 – December 31, 2022) up to the maximum amount shown. Thereafter, the plan pays 100% of the Plan Allowance during the remainder of the benefit period. This amount does not include amounts in excess of the provider's allowable charge.

Diagnostic Lab services include Laboratory and Pathology. Diagnostic Lab services require one copay (or, for some plans, coinsurance after deductible) per date of service and type of service.

Basic Diagnostic Services include Diagnostic X-ray, diagnostic medical and allergy testing. Basic diagnostic services require one copay (or, for some plans, coinsurance after deductible) per date of service and type of service.

Advanced Imaging services include, but are not limited to, CAT scan, CTA, MRI, MRA, PET scan, and PET/CT Scan. Advanced Imaging services require one copay (or, for some plans, coinsurance after deductible) per date of service and type of service.

Pediatric vision benefits utilize the Davis Vision Network. Pediatric dental benefits utilize United Concordia's Advantage Plus 2.0 Network.

Essential Formulary prescription drug cost covers a 90-day (Mail Order) or 34-day or 90-day (Retail) supply. This plan has a four-tier closed formulary prescription drug structure. Drugs not appearing on the formulary will be covered only where an exception has been granted by the plan.

Qualified High Deductible Health Plans may be coupled with a Health Savings Account (HSA). However, certain Cost-Sharing Reductions (CSR) or plan variations of this plan that are offered through the Health Insurance Marketplace are not intended to be used with an HSA. If you have questions, please check with your financial advisor.

BlueCard coverage is available for routine, emergency, and urgent care for all plans when you are away from home. Consult your plan documents for additional information. BlueCard is a registered mark of the Blue Cross and Blue Shield Association, an association of independent Blue Cross and Blue Shield Plans.

Please note that information regarding the Patient Protection and Affordable Care Act of 2010 (a.k.a. "PPACA", "Affordable Care Act", "ACA", and/or "Health Care Reform"), as amended, and/or any other law, does not constitute legal or tax advice and is subject to change based upon the issuance of new guidance and/or change in laws. This information is intended to provide general information only and does not attempt to give you advice that relates to your specific circumstances. The information regarding any health plan will be subject to the terms of the applicable health plan benefit agreement. Any review of materials, request for information, or application does not obligate you to enroll for coverage. Please request the Outline of Coverage for details on benefits, conditions, and exclusions. Providing your information is voluntary.

To find more information about Highmark's benefits and operating procedures, such as accessing the drug formulary or using network providers, please go to DiscoverHighmark.com/QualityAssurance; or for a paper copy, call 855-873-4109 (TTY/TDD 711).

Blue Distinction Centers (BDC) met overall quality measures for patient safety and outcomes, developed with input from the medical community. A Local Blue Plan may require additional criteria for providers located in its own service area; for details, contact your Local Blue Plan. Blue Distinction Centers+ (BDC+) also met cost measures that address consumers' need for affordable healthcare. Each provider's cost of care is evaluated using data from its Local Blue Plan. Providers in CA, ID, NY, PA, and WA may lie in two Local Blue Plans' areas, resulting in two evaluations for cost of care; and their own Local Blue Plans decide whether one or both cost of care evaluation(s) must meet BDC+ national criteria. National criteria for BDC and BDC+ are displayed on www.bcbs.com. Individual outcomes may vary. For details on a provider's in-network status or your own policy's coverage, contact your Local Blue Plan and ask your provider before making an appointment. Neither Blue Cross and Blue Shield Association nor any Blue Plans are responsible for non-covered charges or other losses or damages resulting from Blue Distinction or other provider finder information or care received from Blue Distinction or other providers.

Blue365 is a registered mark of the Blue Cross Blue Shield Association.

Blue Distinction is a registered mark of the Blue Cross and Blue Shield Association, an association of independent Blue Cross and Blue Shield Plans.

Blues on Call is a service mark of the Blue Cross Blue Shield Association.

You should confirm the network status of a provider prior to receiving services. You can call My Care Navigator at 1-888-BLUE-428 to confirm if a doctor or facility will be in network in 2022.

American Well is an independent company that provides telemedicine services. American Well does not provide Blue Cross and/or Blue Shield products or services and it is solely responsible for its telemedicine services.

Sharecare, RealAge Test and AskMD are registered trademarks of Sharecare, LLC., an independent and separate company that provides a consumer care engagement platform for Highmark members. Sharecare is solely responsible for its programs and services, which are not a substitute for professional medical advice, diagnosis or treatment. Sharecare does not endorse any specific product service or treatment. Health care plans and the benefits thereunder are subject to the terms of the applicable benefit agreement.

My Care Navigator is a service mark of Highmark Inc.

Papa Pals is a separate company that provides companionship and assistance with everyday tasks to Highmark members.

TruHearing is a separate company that provides hearing aid devices and services that TruHearing is providing to Highmark or Highmark members.

Highmark Blue Cross Blue Shield Delaware is an independent licensee of the Blue Cross Blue Shield Association.

All references to "Highmark" in this communication are references to Highmark Inc., an independent licensee of the Blue Cross Blue Shield Association, and/or to one or more of its affiliated Blue companies.

Discrimination is Against the Law

The Claims Administrator/Insurer complies with applicable Federal civil rights laws and does not discriminate on the basis of race, color, national origin, age, disability, or sex. The Claims Administrator/Insurer does not exclude people or treat them differently because of race, color, national origin, age, disability, or sex. The Claims Administrator/Insurer:

- Provides free aids and services to people with disabilities to communicate effectively with us, such as:
 - Qualified sign language interpreters
 - Written information in other formats (large print, audio, accessible electronic formats, other formats)
- Provides free language services to people whose primary language is not English, such as:
 - Qualified interpreters
 - Information written in other languages

If you need these services, contact the Civil Rights Coordinator.

If you believe that the Claims Administrator/Insurer has failed to provide these services or discriminated in another way on the basis of race, color, national origin, age, disability, or sex, you can file a grievance with: Civil Rights Coordinator, P.O. Box 22492, Pittsburgh, PA 15222, Phone: 1-866-286-8295, TTY: 711, Fax: 412-544-2475, email: CivilRightsCoordinator@highmarkhealth.org. You can file a grievance in person or by mail, fax, or email. If you need help filing a grievance, the Civil Rights Coordinator is available to help you. You can also file a civil rights complaint with the U.S. Department of Health and Human Services, Office for Civil Rights electronically through the Office for Civil Rights Complaint Portal, available at <https://ocrportal.hhs.gov/ocr/portal/lobby.jsf>, or by mail or phone at:

U.S. Department of Health and Human Services
200 Independence Avenue, SW
Room 509F, HHH Building
Washington, D.C. 20201
1-800-368-1019, 800-537-7697 (TDD)

Complaint forms are available at <http://www.hhs.gov/ocr/office/file/index.html>.

If you speak English, language assistance services, free of charge, are available to you. Call 1-877-959-2563.

Si usted habla español, servicios de asistencia lingüística, de forma gratuita, están disponibles para usted. Llame al 1-877-959-2563.

如果您说中文，可向您提供免费语言协助服务。
請致電 1-877-959-2563。

Nếu quý vị nói tiếng Việt, chúng tôi cung cấp dịch vụ hỗ trợ ngôn ngữ miễn phí cho quý vị. Xin gọi số 1-877-959-2563.

한국어를 사용하시는 분들을 위해 무료 통역이 제공됩니다.
1-877-959-2563 로 전화.

Kung nagsasalita ka ng Tagalog, may makukuha kang mga libreng serbisyong tulong sa wika. Tumawag sa 1-877-959-2563.

Если вы говорите по-русски, вы можете воспользоваться бесплатными услугами языковой поддержки. Звоните 1-877-959-2563.

إذا كنت تتحدث اللغة العربية، فهناك خدمات المعونة في اللغة المجانية متاحة لك. اتصل على الرقم
1-877-959-2563 .

Si se Kreyòl Ayisyen ou pale, gen sèvis entèprèt, gratis-ticheri, ki la pou ede w.
Rele nan 1-877-959-2563.

Si vous parlez français, les services d'assistance linguistique, gratuitement, sont à votre disposition. Appelez au 1-877-959-2563.

Dla osób mówiących po polsku dostępna jest bezpłatna pomoc językowa.
Zadzwoń 1-877-959-2563.

Se a sua língua é o português, temos atendimento gratuito para você no seu idioma. Ligue para 1-877-959-2563.

Se parla italiano, per lei sono disponibili servizi di assistenza linguistica a titolo gratuito. Chiamare l'1-877-959-2563.

Wenn Sie Deutsch sprechen, steht Ihnen unsere fremdsprachliche Unterstützung kostenlos zur Verfügung. Rufen Sie 1-877-959-2563.

日本語が母国語の方は言語アシスタンス・サービスを無料でご利用いただけます。1-877-959-2563 を呼び出します。

اگر شما به زبان فارسی صحبت می کنید، خدمات کمک زبان رایگان
با تماس با شماره 1-877-959-2563 .

Notes

Highmark, a member of the Blue Cross Blue Shield Association,* has been providing secure and stable health care coverage for over 80 years. With 1 in 3 Americans covered by a Blue Cross and/or Blue Shield plan, when you're with Highmark, you're in good company.

* The Blue Cross Blue Shield Association is an association of independent Blue Cross Blue Shield plans.

Ready to (en)roll? Cool. Here's how to do it:

- By phone: 1-855-882-6533
 - Online: Highmark2022Plans.com
 - By contacting your agent or broker
-



Because Life.™