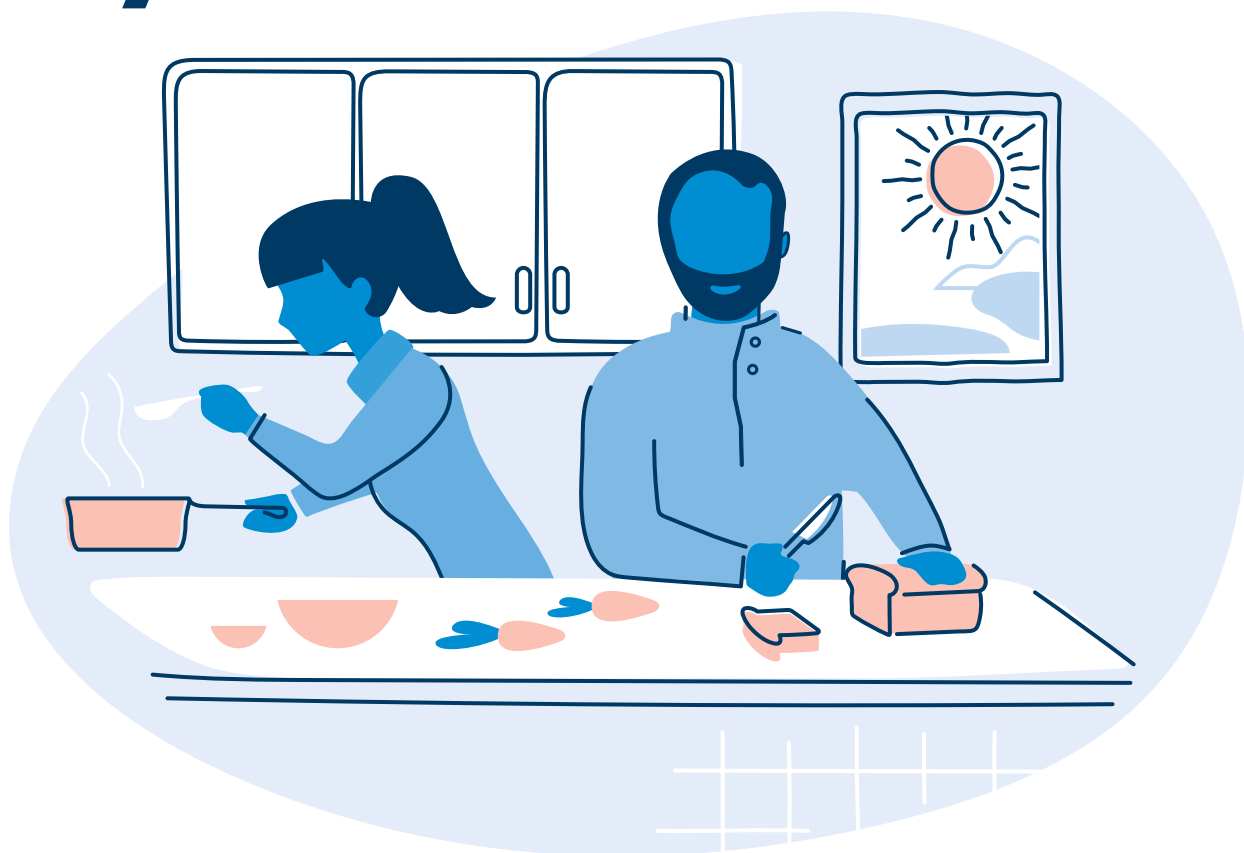


# There's a plan in here for a life like yours.



Your guide to finding just the right  
**Individual** or **Family** plan for you.

**For Benefit Period:**  
**January 1 to December 31, 2022**

**HIGHMARK**   
Because Life.™



# Go ahead. Get picky about your plan.

With lots of great coverage options from Highmark, this book will help you find the plan, the product, and the network access that matters most to you.

Looking for something in particular? You can easily navigate through the guide by clicking on the headings in the Table of Contents.

---

Why choose Highmark? .....	5
Affordable Care Act basics.....	10
Financial help info.....	12
Enrollment dates.....	14
Enrollment checklist .....	15
Product and network highlights.....	16
Plan details by county .....	34
Helpful health insurance definitions.....	51
Legal info .....	52

---



---

# Why choose a Highmark health plan?

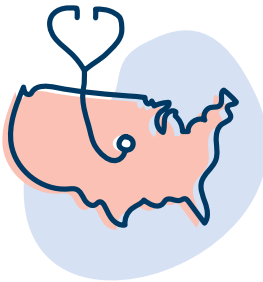
Woah. So many reasons. Here are three big ones right off the top of our heads.



1

## Expert care, close to home.

Get easy access to in-network care throughout central Pennsylvania. All of our coverage options give you in-network access to top-quality care, close to home.



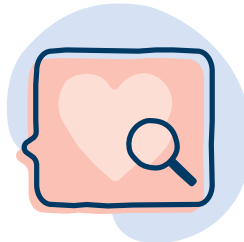
2

## Coast-to-coast coverage with BlueCard®.

All of our plans come with access to BlueCard, which connects you to the largest physician and hospital networks in the U.S. with over 1.7 million providers, including 95% of all hospitals.\*

With most Highmark plans, BlueCard also gives you access to routine,\*\* urgent, and emergency care, no matter where you are. Some plans only provide BlueCard coverage for emergency and urgent care.

**See page 18 for more information on BlueCard.**



3

## No red tape.

Lose the timewasting of going to an appointment just to get another appointment. **See whichever in-network doctors you want to see — no referral needed.** Or call 1-888-BLUE-428, and we'll find a specialist for you. No hoops, no hoopla.

---

## And that's just for starters.

Turn the page for even more reasons to choose Highmark.

---

\* According to the Blue Cross and Blue Shield Association.

\*\* Certain services may require you to work with your BlueCard-participating provider to obtain prior authorization.

**How easy do we  
make it to find care  
and get care?**

**Almost too easy.**



#### DENTAL AND VISION COVERAGE

## All your care, all in one plan.

Healthy eyes and teeth are important parts of your overall health and regular checkups can help you stay ahead of potential problems down the road. That's why all of our plans come with pediatric dental and vision benefits. Some of our plans include adult dental and vision benefits too — so there's no need to purchase separate plans.



#### VIRTUAL HEALTH

## Face-to-face with a doctor, 24/7.

Need to see a doctor but don't want to leave your couch? Get a diagnosis, treatment plan, or prescription any time, right from your phone or computer. Best of all, the virtual health services provided by Amwell® are also available through many in-network providers. That's laid-back-in-a-recliner easy.



#### BLUE DISTINCTION®

## See specialists who get better results.

Only doctors who consistently deliver safe, effective treatments make the Blue Distinction list. When you use our Find a Doctor tool, a special logo will be by their name, so you can cherry-pick a top-performing specialist for any care you need.



#### JOHNS HOPKINS MEDICINE COLLABORATION

## Expert teamwork for advanced care.

We collaborate with some of the best minds, like Johns Hopkins Medicine, for cancer research. That lets us bring the latest innovative medical breakthroughs right to your neighborhood.

---

**How simple is it  
for you to get  
answers and  
reach your goals?**

**Super simple.**





#### THE HIGHMARK APP AND MEMBER WEBSITE

## Your entire plan at your fingertips.

No more searching for old files or waiting on snail mail. Your digital ID card, Find a Doctor tool, deductible progress, and claims status are all available via the Highmark Plan app (available on Google Play or in the Apple App Store) or online at [highmarkblueshield.com](https://highmarkblueshield.com).



#### MY CARE NAVIGATOR™

## Your appointments, booked for you.

It's as simple as calling 1-888-BLUE-428. We'll help you find the in-network doctor you need and reserve some space on their calendar for a checkup. Which means less on-hold music for you.



#### BLUES ON CALL™

## Answers from a health pro, 24/7.

Medical concerns during off hours? Just call 1-888-BLUE-428 to get support from a registered nurse or a health coach any time and put your worries to bed.



#### WELLNESS

## Personalized support for health goals.

Looking to lose weight? Quit smoking? Be more active? Get guidance based on your lifestyle, trackers to measure your progress, resources like Sharecare®, and access to experienced wellness coaches to make healthy choices and keep you motivated. Once you're enrolled, visit [mycare.sharecare.com](https://mycare.sharecare.com).



#### BLUE365®

## Discounts to help you stay healthy and active.

From workout gear to gym memberships to healthy meal services, we'll take a little off the top while you're taking a little off your middle. Member-only deals are at [blue365deals.com](https://blue365deals.com).

---

**Before we get  
much further,  
let's cover some  
Affordable Care Act  
(ACA) essentials.**

# ACA basics

## Metal levels

ACA plans\* are broken into four categories based on how you and your plan share the costs of your health care.

Just so you know, metal levels reflect cost-sharing\*\* differences only – which means you get the same quality of care at any level.

	CATASTROPHIC	BRONZE	SILVER	GOLD	EXTRA SAVINGS SILVER
Premium	Low	Low	Medium	High	Medium
Out-of-Pocket Costs	Highest	Highest	High	Medium	Low
Makes sense if you:	Never use health care services unless it's an emergency. Only available if you're under 30 or have a hardship.	Don't use a lot of health care services and/or want to keep premium payments low.	Are not eligible for APTC but want to balance premiums with out-of-pocket costs.	Use health care services somewhat frequently and/or want low out-of-pocket costs for most commonly used services.	Are CSR eligible OR want to balance premiums with out-of-pocket costs.

\* ACA also includes Platinum level plans; however, Highmark does not offer these types of plans in Pennsylvania.

## Ways to save

**Good news:** There are two ways available to save for Affordable Care Act (ACA) enrollees.

**Advance Premium Tax Credits (APTC)**, which may be applied – in advance – to lower what you pay each month for your premium on any level Marketplace plan except Catastrophic.

**Cost-Sharing Reductions (CSR)** will lower out-of-pocket costs that you may pay at the time of service for doctor visits, lab tests, drugs, and other covered services. CSR plans also offer lower deductibles, copays, and coinsurance. You can only get these savings if you enroll in an "Extra Savings" Silver plan.

**You can qualify for both an APTC and CSR, too.**

**Even better news:** 4 out of 5 Marketplace enrollees will be able to find a plan for \$10 or less a month with advance premium tax credits, and over half will be able to find a Silver plan for \$10 or less a month with advance premium tax credits.

\*\*The portion of health care services that you pay out-of-pocket. This generally includes deductibles, coinsurance, and copayments.

## See if you qualify

To see if you're eligible for financial help, locate your qualifying income and household size on the chart below. Then refer to the Standard or Extra Savings plans for your county to find the plans that will reduce how much you pay for care.

Even if you don't qualify for cost-sharing reductions, you may be eligible for advance premium tax credits. Please refer to the Standard plan options for your county.

WHO NEEDS COVERAGE?	What is the income for those covered under health plan?				
	Eligible for Medicaid	Eligible for CSRs and APTCs			Eligible for APTCs
	Medicaid Eligible Range (100-138% or less FPL)	Silver Extra Savings Plans			Standard
		138-149% CSR plans	150-199% CSR plans	200-249% CSR plans	250% or more
Single	Less than \$17,774	\$17,775 - \$19,319	\$19,320 - \$25,759	\$25,760 - \$32,199	\$32,200 or more
Family of 2	Less than \$24,040	\$24,041 - \$26,129	\$26,130 - \$34,839	\$34,840 - \$43,549	\$43,550 or more
Family of 3	Less than \$30,305	\$30,306 - \$32,939	\$32,940 - \$43,919	\$43,920 - \$54,899	\$54,900 or more
Family of 4	Less than \$36,570	\$36,571 - \$39,749	\$39,750 - \$52,999	\$53,000 - \$66,249	\$66,250 or more
Family of 5	Less than \$42,835	\$42,836 - \$46,559	\$46,560 - \$62,079	\$62,080 - \$77,599	\$77,600 or more
Family of 6	Less than \$49,100	\$49,101 - \$59,369	\$53,370 - \$71,159	\$71,160 - \$88,949	\$88,950 or more
Family of 7	Less than \$55,356	\$55,357 - \$60,179	\$60,180 - \$80,239	\$80,240 - \$100,299	\$100,300 or more
Family of 8	Less than \$61,631	\$61,632 - \$66,989	\$66,990 - \$89,319	\$89,320 - \$111,649	\$111,650 or more

\*Most individuals and families with household incomes 100% or more of the FPL will qualify for premium tax credits. These credits help lower the cost of health insurance coverage and are based on the second-lowest-cost Silver plan available in your area on the Pennsylvania Insurance Exchange. The second-lowest-cost Silver plan is also known as the "benchmark plan." Advance premium tax credits vary by income. Households with incomes 150% or less of the FPL will pay no premium for the benchmark plan. Those households with annual incomes 400% or more of the FPL will pay no more than 8.5% of their household income on health insurance premiums for the benchmark plan.

\*Income below 138% FPL: If your income is below 138% FPL and your state has expanded Medicaid coverage, you qualify for Medicaid based only on your income.

\*American Indians and Alaska Natives who are members of federally recognized tribes are eligible for cost-sharing reductions at alternative dollar thresholds.

This chart is only applicable for coverage in 2022 and in the 48 contiguous states and the District of Columbia. For families/households with more than 8 persons, add \$5,220 for each additional person. HHS Poverty Guidelines for 2021 (January 31, 2021). Retrieved from <https://aspe.hhs.gov/poverty-guidelines>.

**Check to see if you qualify for one or both types of help.  
Call 855-400-9159.**

## ACA plans vs. short-term plans and Health Care Sharing Ministries

In addition to the availability of APTC and CSR, all ACA plans provide coverage for preexisting conditions and the 10 Essential Health Benefits (see page 17). Short-term plans and Health Care Sharing Ministries – which are plans that come with a fixed, limited term – do not. These plans can seem like a cheaper alternative to ACA coverage but often come with hidden costs and exclusions that can make them more expensive in the long run.

### Other types of hidden costs in short-term and Health Care Sharing Ministries plans:

	SHORT-TERM PLANS AND HEALTH CARE SHARING MINISTRIES	ACA PLANS
Capped out-of-pocket spending	not included	included
Coverage of 10 Essential Health Benefits	not included	included
No limits on covered doctor visits	not included	included
No dollar limits on covered benefits	not included	included
No limits on prescription drug coverage	not included	included
Coverage for preexisting conditions with no waiting period	not included	included

A listing of the 10 Essential Health Benefits can be found on page 17.



# Next, enrollment dates.

There are two different ways you can be eligible to enroll in or change your ACA coverage. One is a fixed period that happens every year. The other is for special cases that can happen any time.

## 1 EXTENDED OPEN ENROLLMENT PERIOD November 1, 2021 – January 15, 2022

If you sign up by December 15, 2021, your plan takes effect on January 1, 2022.

If you sign up between December 16, 2021 and January 15, 2022, your plan takes effect on February 1, 2022.



## 2 SPECIAL ENROLLMENT PERIODS Can happen any time throughout the year

During a Special Enrollment Period, you can only get or change coverage if you have a qualifying life event. Examples include losing your existing coverage, a new addition to the family, getting married, or moving to a new area where you can't keep your current plan. Many Special Enrollment Periods only last 60 days from the qualifying life event.

If you think you're eligible for a Special Enrollment Period, you may be asked to submit documents to verify it. You can go to [discoverhighmark.com](https://www.discoverhighmark.com) for more information.

---

# Finally, your ACA Enrollment Checklist.

Here's the info you'll need for each person who will be covered on your plan.

- Date of birth
- Social Security number  
(or legal immigrant documents)
- Income documentation for all household members, even if they won't be covered by the plan  
(pay stubs, W-2 forms, or wage and tax statements)
- Current health insurance policy numbers (if applicable)
- Info on any health insurance you or your family could get from your job

All set? Great. Let's dig into the details for 2022 — and find you the plan with the benefits and features that matter most to you.

# 2022 Highmark product and network highlights

Now that we've gotten the preliminaries out of the way, let's take a look at the products and networks available in your area in 2022.



---

# Cue the highlight reel.

With Highmark, you get all the essentials — and so much more.

**First, you get access to the 10 Essential Health Benefits — plus coverage for preexisting conditions. They include:**

- Outpatient care
- Emergency services
- Hospitalization (like surgery and overnight stays)
- Pregnancy, maternity, and newborn care
- Mental health and substance use disorder services
- Prescription drugs
- Rehabilitative and habilitative services and devices
- Laboratory services
- Preventive and wellness services and chronic disease management
- Pediatric services, including dental and vision care

**But Highmark goes above and beyond.**

**Here are just a few of the awesome advantages you'll find in some of our plans this year.\* Go ahead. Start circling the ones you want.**

- Low office visit copay
- \$0 prescription copays for Tier 1 drugs
- Free preventive vaccines,\*\* tests, and screenings\*\*\*
- Adult dental and vision coverage
- Predictable copays that start on day 1
- Plans with \$0 deductibles
- Prescription drug coverage that starts day 1, no deductible to meet
- Enhanced resources for managing chronic conditions
- Potential tax-free savings with a Health Savings Account\*\*\*\*
  - Money can go in tax-free and lower your taxable income.
  - Money comes out tax-free when used for qualified medical expenses.
  - Interest and earnings on any unused money grows tax-free.
  - Unused money rolls over from year to year.

\* Not all plans include these benefits. The availability of benefits depends on your selected plan.

\*\* As listed on the Highmark Preventive Schedule when given at a participating pharmacy.

\*\*\* As presented on the Highmark Preventive Schedule. To check the preventive schedule for covered care, visit [https://www.highmarkbcbs.com/pdf/Highmark\\_Preventive\\_Schedule\\_2022.pdf](https://www.highmarkbcbs.com/pdf/Highmark_Preventive_Schedule_2022.pdf)

\*\*\*\* Please note: Qualified High Deductible Health Plans may be coupled with a Health Savings Account (HSA). However, certain cost-sharing reductions (CSR) or plan variations of this plan that are offered through the Pennsylvania Insurance Exchange are not intended to be used with an HSA. If you have questions, please check with your financial advisor.

All of our coverage options give you in-network access to top-quality care, close to home. You can even see in-network specialists without a referral. Whatever your health care needs and budget, we've got a plan for you. All you have to do is choose.

---



## my Direct Blue EPO

**In-network access to top-quality care throughout central Pennsylvania, plus full BlueCard access coast to coast.**

my Direct Blue EPO gives you in-network access\* to many community hospitals and doctors who have partnered with Highmark to deliver high-quality, lower-cost care. And with our BlueCard® program, you get in-network access to providers outside of central Pennsylvania for routine,\*\* emergency, and urgent care, too.

---



## my Direct Blue Lehigh Valley EPO

**In-network access to top-quality care in Lehigh Valley and throughout central Pennsylvania, plus full BlueCard access coast to coast.**

my Direct Blue Lehigh Valley EPO gives you in-network access\* to Lehigh Valley Health Network as well as many community hospitals and doctors who have partnered with Highmark to deliver high-quality, lower-cost care.

---



## my Blue Access PPO

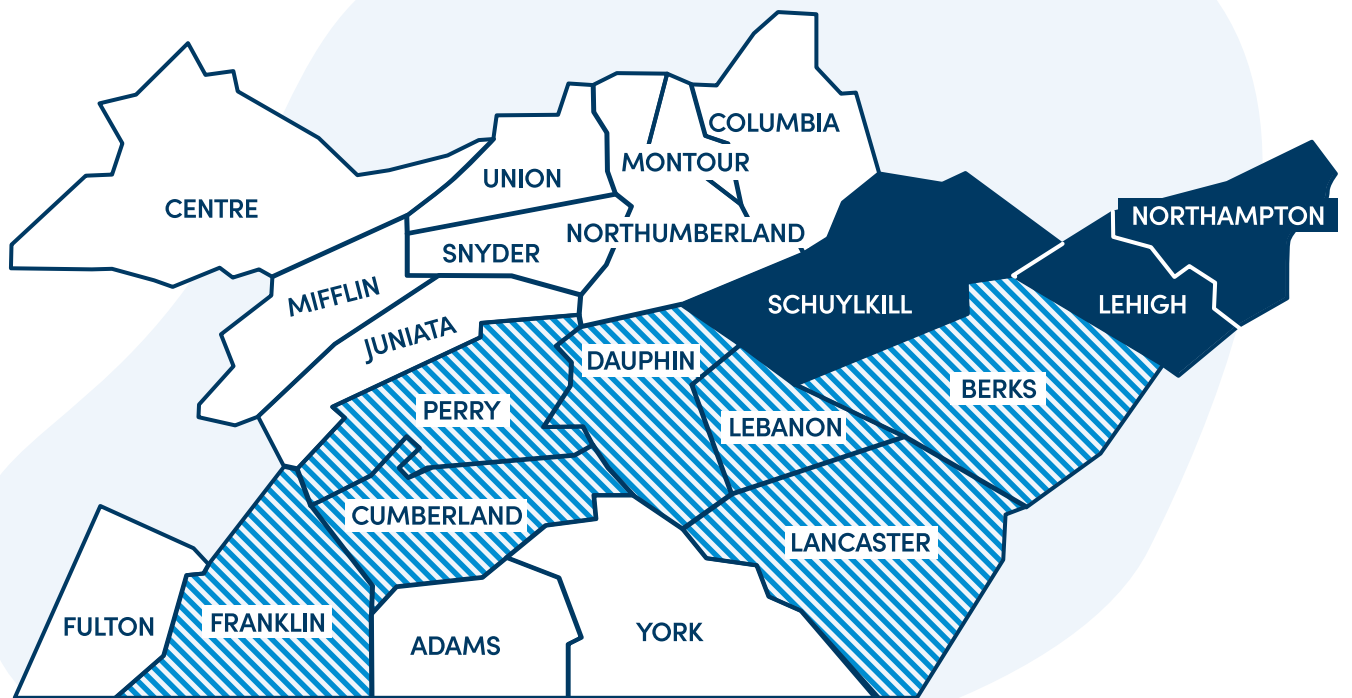
**Comprehensive in-network access throughout central Pennsylvania.**




my Blue Access PPO gives you in-network access to Highmark's broadest network of doctors and hospitals. With a PPO, you also get the flexibility to see out-of-network providers. Plus, you have full BlueCard coverage for routine, emergency, and urgent care at out-of-network doctors and hospitals close to home and nationwide.

\* Care received from out-of-network providers is not covered, except for emergency and urgent situations.

\*\* Certain services may require you to work with your BlueCard-participating provider to obtain prior authorization.

Plans are available for residents of the counties highlighted below.



-  my Direct Blue Lehigh Valley EPO and my Blue Access PPO
-  my Direct Blue EPO and my Blue Access PPO
-  my Blue Access PPO

To see if your provider is in network, visit [highmarkblueshield.com](https://highmarkblueshield.com) and click **Find a Doctor** or **Pharmacy**.

---

# Coverage that goes where you go.

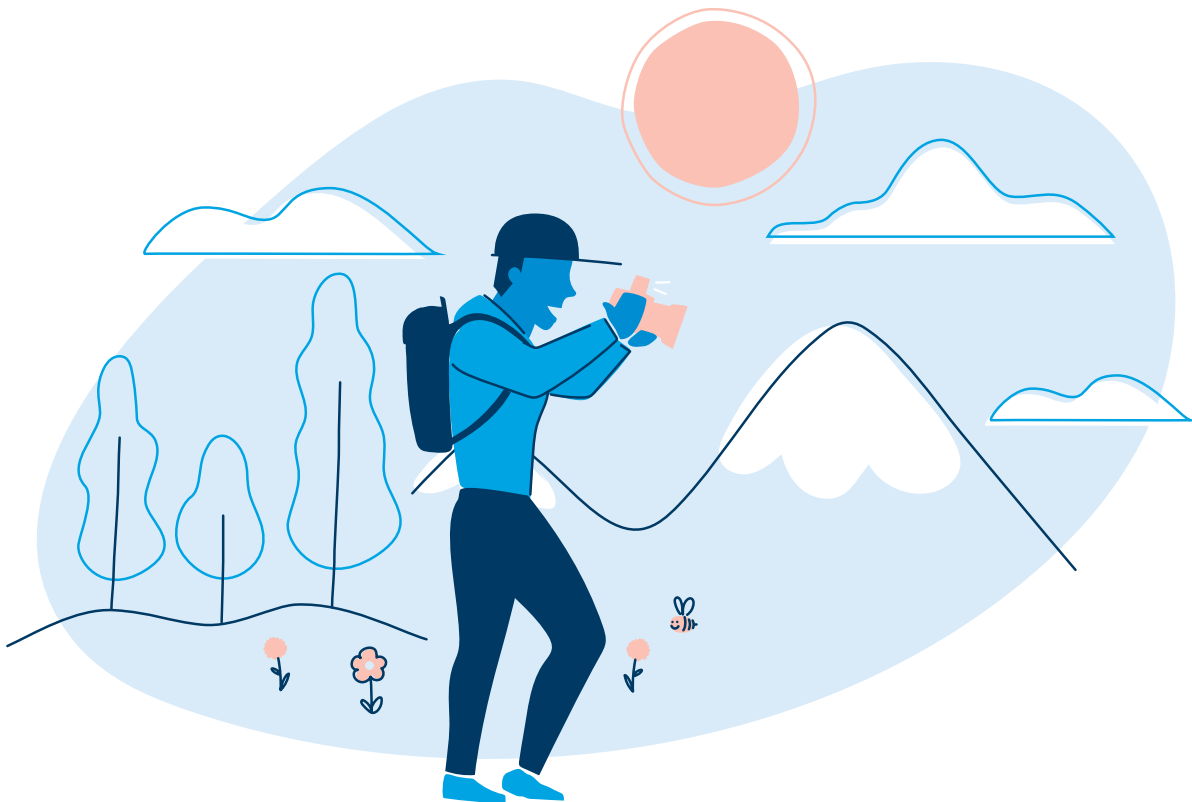


Planning to hit the road or travel abroad this year? With BlueCard, your health care benefits go with you across the country. We give you access to doctors and hospitals almost everywhere, so you'll have peace of mind that you can always find the care you need.

Your coverage extends to many top-rated, out-of-state facilities, like:

- Cleveland Clinic
- Memorial Sloan Kettering Cancer Center
- Johns Hopkins Hospital
- University of Maryland Medical Center

Keep in mind that BlueCard covers routine, emergency, and urgent care for some plans, but only emergency and urgent for others. **Check out the product descriptions on page 18 to learn more about your coverage.**



# In-network facilities

Facilities	my Direct Blue EPO	my Direct Blue Lehigh Valley EPO	my Blue Access PPO
<b>Adams County</b>			
WellSpan Gettysburg Hospital	out-of-network	out-of-network	in-network
<b>Allegheny County</b>			
AHN Allegheny General Hospital	in-network	in-network	in-network
AHN Allegheny Valley Hospital	in-network	in-network	in-network
AHN Brentwood Neighborhood Hospital	in-network	in-network	in-network
AHN Forbes Hospital	in-network	in-network	in-network
AHN Harmar Neighborhood Hospital	in-network	in-network	in-network
AHN Jefferson Hospital	in-network	in-network	in-network
AHN McCandless Neighborhood Hospital	in-network	in-network	in-network
AHN West Penn Hospital	in-network	in-network	in-network
AHN Wexford Hospital	in-network	in-network	in-network
Curahealth Pittsburgh	in-network	in-network	in-network
Heritage Valley Kennedy	in-network	in-network	in-network
Heritage Valley Sewickley	in-network	in-network	in-network
LifeCare Behavioral Health Hospital of Pittsburgh	in-network	in-network	in-network
St. Clair Hospital	in-network	in-network	in-network
The Children's Home of Pittsburgh	in-network	in-network	in-network
UPMC Children's Hospital of Pittsburgh	in-network	in-network	in-network
UPMC East	out-of-network	out-of-network	in-network
UPMC Magee-Womens Hospital	out-of-network	out-of-network	in-network
UPMC McKeesport	out-of-network	out-of-network	in-network
UPMC Mercy	out-of-network	out-of-network	in-network
UPMC Passavant - McCandless	out-of-network	out-of-network	in-network

Take a look at our provider directory to check if there are additional hospitals in your network. You can find the provider directory at [highmarkblueshield.com](https://highmarkblueshield.com) under the **Find a Doctor** or **Pharmacy** tab.

## In-network facilities (continued)

Facilities	my Direct Blue EPO	my Direct Blue Lehigh Valley EPO	my Blue Access PPO
UPMC Presbyterian	out-of-network	out-of-network	in-network
UPMC Shadyside	out-of-network	out-of-network	in-network
UPMC St. Margaret	out-of-network	out-of-network	in-network
UPMC Western Psychiatric Hospital	in-network	in-network	in-network
<b>Armstrong County</b>			
Armstrong County Memorial Hospital	in-network	in-network	in-network
<b>Beaver County</b>			
Heritage Valley Beaver	in-network	in-network	in-network
<b>Bedford County</b>			
UPMC Bedford	in-network	in-network	in-network
<b>Berks County</b>			
Penn State Health St. Joseph Medical Center	in-network	in-network	in-network
Surgical Institute of Reading	in-network	in-network	in-network
Tower Health - Reading Hospital	out-of-network	out-of-network	in-network
<b>Blair County</b>			
Conemaugh Nason Medical Center	in-network	in-network	in-network
Penn Highlands Tyrone	in-network	in-network	in-network
UPMC Altoona	in-network	in-network	in-network
<b>Bradford County</b>			
Guthrie Robert Packer Hospital	in-network	in-network	in-network
Guthrie Robert Packer Hospital - Towanda Campus	in-network	in-network	in-network
Guthrie Troy Community Hospital	in-network	in-network	in-network
<b>Bucks County</b>			
Doylestown Hospital	in-network	in-network	in-network
Grand View Hospital	in-network	in-network	in-network

## In-network facilities (continued)

Facilities	my Direct Blue EPO	my Direct Blue Lehigh Valley EPO	my Blue Access PPO
Jefferson Health - Bucks Hospital	in-network	in-network	in-network
St. Luke's Hospital - Quakertown Campus	in-network	in-network	in-network
St. Luke's Hospital - Upper Bucks Campus	in-network	in-network	in-network
St. Mary Medical Center	in-network	in-network	in-network
<b>Butler County</b>			
BHS Butler Memorial Hospital	in-network	in-network	in-network
UPMC Passavant - Cranberry	out-of-network	out-of-network	in-network
<b>Cambria County</b>			
Conemaugh Memorial Medical Center	in-network	in-network	in-network
Conemaugh Memorial Medical Center - Lee Campus	in-network	in-network	in-network
Conemaugh Miners Medical Center	in-network	in-network	in-network
Select Specialty Hospital - Johnstown	in-network	in-network	in-network
<b>Carbon County</b>			
St. Luke's Hospital - Carbon Campus	in-network	in-network	in-network
St. Luke's Hospital - Lehighon Campus	in-network	in-network	in-network
<b>Centre County</b>			
Mount Nittany Medical Center	in-network	in-network	in-network
<b>Chester County</b>			
Main Line Health - Bryn Mawr Rehab Hospital	in-network	in-network	in-network
Main Line Health - Paoli Hospital	in-network	in-network	in-network
Penn Medicine - Chester County Hospital	in-network	in-network	in-network
Tower Health - Brandywine Hospital	in-network	in-network	in-network
Tower Health - Jennersville Hospital	in-network	in-network	in-network
Tower Health - Phoenixville Hospital	in-network	in-network	in-network

Take a look at our provider directory to check if there are additional hospitals in your network. You can find the provider directory at [highmarkblueshield.com](https://highmarkblueshield.com) under the **Find a Doctor** or **Pharmacy** tab.

## In-network facilities (continued)

Facilities	my Direct Blue EPO	my Direct Blue Lehigh Valley EPO	my Blue Access PPO
<b>Clarion County</b>			
BHS Clarion Hospital	in-network	in-network	in-network
<b>Clearfield County</b>			
Penn Highlands Clearfield	out-of-network	out-of-network	in-network
Penn Highlands DuBois	out-of-network	out-of-network	in-network
<b>Clinton County</b>			
Bucktail Medical Center	in-network	in-network	in-network
UPMC Lock Haven	in-network	in-network	in-network
<b>Columbia County</b>			
Berwick Hospital Center	out-of-network	out-of-network	in-network
Geisinger Bloomsburg Hospital	out-of-network	out-of-network	in-network
<b>Crawford County</b>			
Meadville Medical Center	in-network	in-network	in-network
Titusville Area Hospital	in-network	in-network	in-network
<b>Cumberland County</b>			
Penn State Health Hampden Medical Center	in-network	in-network	in-network
Penn State Health Holy Spirit Medical Center	in-network	in-network	in-network
Select Specialty Hospital - Camp Hill	in-network	in-network	in-network
UPMC Carlisle	in-network	in-network	in-network
UPMC West Shore	out-of-network	out-of-network	in-network
<b>Dauphin County</b>			
Penn State Health Children's Hospital	in-network	in-network	in-network
Penn State Health Milton S. Hershey Medical Center	in-network	in-network	in-network
UPMC Community Osteopathic	out-of-network	out-of-network	in-network
UPMC Harrisburg	out-of-network	out-of-network	in-network



## In-network facilities (continued)

Facilities	my Direct Blue EPO	my Direct Blue Lehigh Valley EPO	my Blue Access PPO
<b>Delaware County</b>			
Crozer Health - Chester Medical Center	in-network	in-network	in-network
Crozer Health - Delaware County Memorial Hospital	in-network	in-network	in-network
Crozer Health - Springfield Hospital	in-network	in-network	in-network
Crozer Health - Taylor Hospital	in-network	in-network	in-network
Main Line Health - Riddle Hospital	in-network	in-network	in-network
<b>Elk County</b>			
Penn Highlands Elk	out-of-network	out-of-network	in-network
<b>Erie County</b>			
AHN Saint Vincent Hospital	in-network	in-network	in-network
LECOM Health - Corry Memorial Hospital	in-network	in-network	in-network
LECOM Health - Millcreek Community Hospital	in-network	in-network	in-network
Select Specialty Hospital – Erie	in-network	in-network	in-network
UPMC Hamot	out-of-network	out-of-network	in-network
<b>Fayette County</b>			
Highlands Hospital	in-network	in-network	in-network
WVU Medicine - Uniontown Hospital	in-network	in-network	in-network
<b>Franklin County</b>			
WellSpan Chambersburg Hospital	in-network	in-network	in-network
WellSpan Waynesboro Hospital	in-network	in-network	in-network
<b>Fulton County</b>			
Fulton County Medical Center	out-of-network	out-of-network	in-network
<b>Greene County</b>			
Washington Health System Greene	in-network	in-network	in-network

Take a look at our provider directory to check if there are additional hospitals in your network. You can find the provider directory at [highmarkblueshield.com](https://highmarkblueshield.com) under the **Find a Doctor** or **Pharmacy** tab.

## In-network facilities (continued)

Facilities	my Direct Blue EPO	my Direct Blue Lehigh Valley EPO	my Blue Access PPO
<b>Huntingdon County</b>			
Penn Highlands Huntingdon	out-of-network	out-of-network	in-network
<b>Indiana County</b>			
Indiana Regional Medical Center	out-of-network	out-of-network	in-network
<b>Jefferson County</b>			
Penn Highlands Brookville	out-of-network	out-of-network	in-network
Punxsutawney Area Hospital	out-of-network	out-of-network	in-network
<b>Lackawanna County</b>			
CHS Moses Taylor Hospital	in-network	in-network	in-network
CHS Regional Hospital of Scranton	in-network	in-network	in-network
Geisinger Community Medical Center	in-network	in-network	in-network
<b>Lancaster County</b>			
Lancaster General Hospital	in-network	in-network	in-network
Lancaster General Hospital Women & Babies	in-network	in-network	in-network
Lancaster Surgery Center	in-network	in-network	in-network
UPMC Lititz	out-of-network	out-of-network	in-network
WellSpan Ephrata Community Hospital	out-of-network	out-of-network	in-network
<b>Lawrence County</b>			
Lawrence County Surgery Center of Edgewood Surgical Hospital	in-network	in-network	in-network
UPMC Jameson	in-network	in-network	in-network
<b>Lebanon County</b>			
WellSpan Good Samaritan Hospital	in-network	in-network	in-network
<b>Lehigh County</b>			
Lehigh Valley Hospital - 17th Street	in-network	in-network	in-network
Lehigh Valley Hospital - Cedar Crest	in-network	in-network	in-network

## In-network facilities (continued)

Facilities	my Direct Blue EPO	my Direct Blue Lehigh Valley EPO	my Blue Access PPO
Lehigh Valley Hospital - Coordinated Health Allentown	in-network	in-network	in-network
Lehigh Valley Reilly Children's Hospital	in-network	in-network	in-network
St. Luke's Hospital - Allentown Campus	out-of-network	out-of-network	in-network
St. Luke's Hospital - Sacred Heart Campus	out-of-network	out-of-network	in-network
<b>Luzerne County</b>			
CHS First Hospital Wyoming Valley	in-network	in-network	in-network
CHS Wilkes-Barre General Hospital	in-network	in-network	in-network
Geisinger Wyoming Valley Medical Center	in-network	in-network	in-network
Lehigh Valley Hospital - Hazleton	in-network	in-network	in-network
<b>Lycoming County</b>			
Geisinger Jersey Shore Hospital	in-network	in-network	in-network
UPMC Muncy	in-network	in-network	in-network
UPMC Williamsport	in-network	in-network	in-network
UPMC Williamsport Divine Providence Campus	in-network	in-network	in-network
<b>McKean County</b>			
Bradford Regional Medical Center	in-network	in-network	in-network
UPMC Kane	in-network	in-network	in-network
<b>Mercer County</b>			
AHN Grove City Hospital	in-network	in-network	in-network
Edgewood Surgical Hospital	in-network	in-network	in-network
Sharon Regional Medical Center	in-network	in-network	in-network
UPMC Horizon - Greenville	in-network	in-network	in-network
UPMC Horizon - Shenango Valley	in-network	in-network	in-network

Take a look at our provider directory to check if there are additional hospitals in your network. You can find the provider directory at [highmarkblueshield.com](https://highmarkblueshield.com) under the **Find a Doctor** or **Pharmacy** tab.

## In-network facilities (continued)

Facilities	my Direct Blue EPO	my Direct Blue Lehigh Valley EPO	my Blue Access PPO
<b>Mifflin County</b>			
Geisinger Lewistown Hospital	out-of-network	out-of-network	in-network
<b>Monroe County</b>			
Lehigh Valley Hospital - Pocono	in-network	in-network	in-network
St. Luke's Hospital - Monroe Campus	in-network	in-network	in-network
<b>Montgomery County</b>			
Einstein Medical Center Elkins Park	in-network	in-network	in-network
Einstein Medical Center Montgomery	in-network	in-network	in-network
Holy Redeemer Hospital	in-network	in-network	in-network
Jefferson Health - Abington Hospital	in-network	in-network	in-network
Jefferson Health - Abington-Lansdale Hospital	in-network	in-network	in-network
Main Line Health - Bryn Mawr Hospital	in-network	in-network	in-network
Main Line Health - Lankenau Medical Center	in-network	in-network	in-network
Tower Health - Pottstown Hospital	in-network	in-network	in-network
<b>Montour County</b>			
Geisinger Janet Weis Children's Hospital	out-of-network	out-of-network	in-network
Geisinger Medical Center	out-of-network	out-of-network	in-network
<b>Northampton County</b>			
Lehigh Valley Hospital - Coordinated Health Bethlehem	in-network	in-network	in-network
Lehigh Valley Hospital – Hecktown Oaks	in-network	in-network	in-network
Lehigh Valley Hospital - Muhlenberg	in-network	in-network	in-network
St. Luke's Hospital - Anderson Campus	out-of-network	out-of-network	in-network
St. Luke's Hospital - Easton Campus	out-of-network	out-of-network	in-network
St. Luke's University Hospital - Bethlehem	out-of-network	out-of-network	in-network
<b>Northumberland County</b>			
Geisinger Shamokin Area Community Hospital	out-of-network	out-of-network	in-network

## In-network facilities (continued)

Facilities	my Direct Blue EPO	my Direct Blue Lehigh Valley EPO	my Blue Access PPO
<b>Philadelphia County</b>			
Children’s Hospital of Philadelphia	in-network	in-network	in-network
Einstein Medical Center Philadelphia	in-network	in-network	in-network
Jefferson Health - Frankford Hospital	in-network	in-network	in-network
Jefferson Health - Methodist Hospital	in-network	in-network	in-network
Jefferson Health - Thomas Jefferson University Hospital	in-network	in-network	in-network
Jefferson Health - Torresdale Hospital	in-network	in-network	in-network
Jefferson Health - WillsEye Hospital	in-network	in-network	in-network
Penn Medicine - Hospital of the University of Pennsylvania	in-network	in-network	in-network
Penn Medicine - Penn Presbyterian Medical Center	in-network	in-network	in-network
Penn Medicine - Pennsylvania Hospital	in-network	in-network	in-network
Temple Health - Fox Chase Cancer Center	in-network	in-network	in-network
Temple Health - Temple University Hospital	in-network	in-network	in-network
Tower Health - Chestnut Hill Hospital	in-network	in-network	in-network
<b>Potter County</b>			
UPMC Cole	in-network	in-network	in-network
<b>Schuylkill County</b>			
Geisinger St. Luke’s Hospital	in-network	in-network	in-network
Lehigh Valley Hospital - Schuylkill E. Norwegian Street	in-network	in-network	in-network
Lehigh Valley Hospital - Schuylkill S. Jackson Street	in-network	in-network	in-network
St. Luke’s Hospital - Miners Campus	out-of-network	out-of-network	in-network

Take a look at our provider directory to check if there are additional hospitals in your network. You can find the provider directory at [highmarkblueshield.com](https://highmarkblueshield.com) under the **Find a Doctor** or **Pharmacy** tab.

## In-network facilities (continued)

Facilities	my Direct Blue EPO	my Direct Blue Lehigh Valley EPO	my Blue Access PPO
<b>Somerset County</b>			
Chan Soon-Shiong Medical Center at Windber	in-network	in-network	in-network
Conemaugh Meyersdale Medical Center	in-network	in-network	in-network
UPMC Somerset	in-network	in-network	in-network
<b>Susquehanna</b>			
Barnes-Kasson Hospital	in-network	in-network	in-network
Endless Mountains Health Systems	in-network	in-network	in-network
<b>Tioga County</b>			
UPMC Wellsboro	in-network	in-network	in-network
<b>Union County</b>			
Evangelical Community Hospital	in-network	in-network	in-network
<b>Venango County</b>			
UPMC Northwest	in-network	in-network	in-network
<b>Warren County</b>			
Warren General Hospital	in-network	in-network	in-network
<b>Washington County</b>			
Advanced Surgical Hospital	in-network	in-network	in-network
AHN Canonsburg Hospital	in-network	in-network	in-network
Monongahela Valley Hospital	in-network	in-network	in-network
Washington Hospital	in-network	in-network	in-network
<b>Wayne County</b>			
Wayne Memorial Hospital	in-network	in-network	in-network
<b>Westmoreland County</b>			
AHN Hempfield Neighborhood Hospital	in-network	in-network	in-network
Excelsa Health Frick Hospital	in-network	in-network	in-network
Excelsa Health Latrobe Hospital	in-network	in-network	in-network
Excelsa Health Westmoreland Hospital	in-network	in-network	in-network

## In-network facilities (continued)

Facilities	my Direct Blue EPO	my Direct Blue Lehigh Valley EPO	my Blue Access PPO
Select Specialty Hospital - Laurel Highlands	in-network	in-network	in-network
<b>Wyoming County</b>			
CHS Tyler Memorial Hospital	in-network	in-network	in-network
<b>York County</b>			
OSS Orthopaedic Hospital	out-of-network	out-of-network	in-network
UPMC Hanover	out-of-network	out-of-network	in-network
UPMC Memorial	out-of-network	out-of-network	in-network
WellSpan Surgery and Rehabilitation Hospital	out-of-network	out-of-network	in-network
WellSpan York Hospital	out-of-network	out-of-network	in-network
<b>Additional in-network facilities*</b>			
Meritus Medical Center	in-network	in-network	in-network
The Johns Hopkins Hospital	in-network	in-network	in-network
University of Maryland Medical Center	in-network	in-network	in-network
UPMC Western Maryland	in-network	in-network	in-network
WVU Medicine - Garrett Regional Medical Center	in-network	in-network	in-network
AHN Westfield Memorial Hospital	in-network	in-network	in-network
Guthrie Corning Hospital	in-network	in-network	in-network
Olean General Hospital	in-network	in-network	in-network
UR Medicine - Jones Memorial Hospital	in-network	in-network	in-network
UR Medicine - Strong Memorial Hospital	in-network	in-network	in-network
Cleveland Clinic	in-network	in-network	in-network
WVU Medicine - Children's Hospital	in-network	in-network	in-network
WVU Medicine - J.W. Ruby Memorial Hospital	in-network	in-network	in-network

This is not a comprehensive list. In addition to the out-of-state hospitals listed here, my Direct Blue EPO, my Direct Blue Lehigh Valley EPO, and my Blue Access PPO plans include all BlueCard providers across the country, as well as other out-of-state hospitals. Take a look at our provider directory to check if there are additional hospitals in your network. You can find the provider directory at [highmarkblueshield.com](http://highmarkblueshield.com) under the **Find a Doctor** or **Pharmacy** tab.

---

# Your Gold 0 plan options

While all of our Gold plans come with a \$0 deductible, there are some differences in copay rates and other benefits from plan to plan. Check out your options below to find the Gold plan that's right for you.

## Gold 0<sup>1</sup> plans

Our Gold 0 plans offer lower copays for care than other metal level with copays as low as \$20 for office visits. Even better, you'll have predictable copays for most services — so you'll know what you owe going in.

---

## Premier Gold 0<sup>1</sup> plans

Our Premier Gold 0 plans offer Highmark's lowest copays on office visits, as low as \$15. Plus lower out-of-pocket costs on other covered services and exclusive access to Papa Pals and TruHearing.



### Papa Pals

With Papa Pals, each member gets up to 36 hours per year of help with everyday tasks like light cleaning, laundry, grocery shopping, and getting to and from appointments so you have more time to focus on living your best, and healthiest, life. To learn more, visit [joinpapa.com/activities/video-visits](https://joinpapa.com/activities/video-visits).



### TruHearing

Exclusive to the Premier Gold 0 plan, **TruHearing**<sup>™</sup> provides lower copays for hearing aids purchased through the TruHearing Program. Plus, you can receive a hearing evaluation, as well as training, setup, fine-tuning, and adjustments from an in-network TruHearing provider without ever leaving your home. All you need is a smartphone, tablet, or computer. To learn more about TruHearing, visit [Highmark-HS.TruHearing.com](https://Highmark-HS.TruHearing.com) or refer to your contract.

<sup>1</sup> These plans are offered with my Direct Blue EPO, my Direct Blue Lehigh Valley EPO, and my Blue Access PPO.



# Plans that include adult vision and dental



Highmark is making pediatric and adult vision and dental care more accessible. At every metal level, we offer plans with the option to have adult dental and vision included. Pediatric dental and vision benefits are automatically included with every plan.

You can find adult dental and vision benefits on pages 48-50 and pediatric dental and vision benefits at [PediatricDentalAndVision.com](https://www.highmarkblueshield.com/pediatric-dental-and-vision).

## Benefits of adult vision coverage:

- Free eye exam
- Allowance for glasses or contacts

Our vision plans use the Davis Vision Network — a list of in-network providers can be accessed through [highmarkblueshield.com](https://www.highmarkblueshield.com).

To access network providers, click **Health Care Reform Vision Network**.

## Benefits of adult dental coverage:

- Convenience of only having one bill to pay for comprehensive medical and dental coverage
- Decreased waiting period
- Two free cleanings

Our plans use the Concordia Advantage network. To find a provider, visit [highmarkblueshield.com](https://www.highmarkblueshield.com) and select the **Find a Doctor** or **Pharmacy** tab.

### IT PAYS TO HAVE DENTAL COVERAGE

Service	Average cost with dental coverage	Average cost without dental coverage (usual fee)
Exams, cleanings, and X-rays	\$0-37	\$288 <sup>1</sup>
Composite filling	\$71	\$170 <sup>2</sup>
Simple extraction	\$33	\$163 <sup>3</sup>
Root canal	\$400	\$1,000 <sup>4</sup>

<sup>1</sup> [https://www.dentaly.org/us/oral-hygiene/teeth-cleaning/#How\\_much\\_does\\_a\\_dental\\_cleaning\\_cost](https://www.dentaly.org/us/oral-hygiene/teeth-cleaning/#How_much_does_a_dental_cleaning_cost), last accessed September 19, 2021  
<https://www.dentaly.org/us/panoramic-dental-xray/>, last accessed September 19, 2021

<sup>2</sup> [https://www.dentaly.org/us/tooth-filling/#How\\_much\\_do\\_fillings\\_cost](https://www.dentaly.org/us/tooth-filling/#How_much_do_fillings_cost), last accessed September 20, 2021

<sup>3</sup> [https://www.dentaly.org/us/tooth-extraction/#How\\_much\\_does\\_tooth\\_removal\\_cost\\_in\\_the\\_US](https://www.dentaly.org/us/tooth-extraction/#How_much_does_tooth_removal_cost_in_the_US), last accessed September 20, 2021

<sup>4</sup> <https://www.webmd.com/oral-health/guide/dental-root-canals>, last accessed September 20, 2021

**Now, let's dig  
into plan details.**

---

To make it easier, we've sorted them by what's available where you live.

Just find your county and jump to that section.

---

**Berks, Cumberland, Dauphin, Franklin, Lancaster, Lebanon, and Perry Counties**

Standard plan options ..... 36

Extra Savings plan options ..... 38

**Lehigh, Northampton, and Schuylkill Counties**

Standard plan options ..... 40

Extra Savings plan options ..... 42

**Adams, Centre,\* Columbia, Fulton, Juniata, Mifflin, Montour, Northumberland, Snyder, Union, and York Counties**

Standard plan options ..... 44

Extra Savings plan options ..... 46

**Adult Vision and Dental Benefits** ..... 48

---

\* If you're a Centre county resident, you must live in one of the following ZIP codes to enroll in one of these plans: 16801, 16802, 16803, 16804, 16805, 16820, 16823, 16826, 16827, 16828, 16832, 16835, 16841, 16844, 16851, 16852, 16853, 16854, 16856, 16864, 16865, 16868, 16870, 16872, 16875, 16877, or 16882

**You'll see plan summaries here. If you want any plan's full benefit list, visit [HighmarkSBCs.com](https://www.HighmarkSBCs.com) or get a paper copy by calling 1-833-258-0188 (TTY/TDD 711).**

---

## Coverage Level

### Catastrophic 8700

3 Free PCP visits

### Bronze HSA 6900

### Bronze 3800

### Silver HSA 3250

	Catastrophic 8700	Bronze HSA 6900	Bronze 3800	Silver HSA 3250
<b>Plan Availability</b>	my Direct Blue Major Events EPO 8700 my Blue Access Major Events PPO 8700	my Direct Blue EPO Bronze 6900 HSA my Blue Access PPO Bronze 6900 HSA	my Direct Blue EPO Bronze 3800 my Blue Access PPO Bronze 3800	my Direct Blue EPO Silver 3250 HSA my Blue Access PPO Silver 3250 HSA
<b>In-Network Deductible</b>	Individual: \$8,700 Family: \$17,400	Individual: \$6,900 Family: \$13,800	Individual: \$3,800 Family: \$7,600	Individual: \$3,250 Family: \$6,500
<b>In-Network, Out-of-Pocket Maximum</b>	Individual: \$8,700 Family: \$17,400	Individual: \$6,900 Family: \$13,800	Individual: \$8,700 Family: \$17,400	Individual: \$6,900 Family: \$13,800
<b>Primary Care Visit</b>	First 3 visits free, then \$0 after deductible	\$0 after deductible	\$80 copay	\$70 after deductible
<b>Specialist Visit</b>	\$0 after deductible	\$0 after deductible	\$80 copay	\$70 after deductible
<b>Outpatient Mental Health and Substance Abuse Visits</b>	\$0 after deductible	\$0 after deductible	\$80 copay	\$70 after deductible
<b>Speech, Physical, and Occupational Therapy and Chiropractic Care<sup>2</sup></b>	\$0 after deductible	\$0 after deductible	\$80 copay	\$70 after deductible
<b>Diagnostic Test Lab Services</b>	\$0 after deductible	\$0 after deductible	\$65 copay	\$90 after deductible
<b>Diagnostic Test X-Rays</b>	\$0 after deductible	\$0 after deductible	\$140 copay	\$90 after deductible
<b>Urgent Care</b>	\$0 after deductible	\$0 after deductible	\$100 copay	\$140 after deductible
<b>Emergency Services</b>	\$0 after deductible	\$0 after deductible	50% after deductible	\$750 after deductible
<b>Hospital Inpatient (including maternity)</b>	\$0 after deductible	\$0 after deductible	50% after deductible	\$900 after deductible
<b>Pharmacy Summary<sup>3</sup></b>	\$0/\$0/\$0/\$0 after deductible	\$0/\$0/\$0/\$0 after deductible	50%/50%/50%/50% after deductible	\$0/\$30/\$150/50% after deductible
<b>Includes Adult Dental and Vision Option<sup>4</sup></b>	No	No	Yes	No

## Coverage Level

	Silver 2900	Silver 2600*	Gold HSA 1400 <sup>1*</sup>	Gold 0	Premier Gold 0
<b>Plan Availability</b>	my Direct Blue EPO Silver 2900	my Direct Blue EPO Silver 2600*	my Direct Blue EPO Gold 1400 HSA <sup>1*</sup>	my Direct Blue EPO Gold 0	my Direct Blue EPO Premier Gold 0
	my Blue Access PPO Silver 2900	my Blue Access PPO Silver 2600*	my Blue Access PPO Gold 1400 HSA <sup>1*</sup>	my Blue Access PPO Gold 0	my Blue Access PPO Premier Gold 0
<b>In-Network Deductible</b>	Individual: \$2,900 Family: \$5,800	Individual: \$2,600 Family: \$5,200	Individual: \$1,400 Family: \$2,800	Individual: \$0 Family: \$0	Individual: \$0 Family: \$0
<b>In-Network, Out-of-Pocket Maximum</b>	Individual: \$7,800 Family: \$15,600	Individual: \$8,500 Family: \$17,000	Individual: \$5,000 Family: \$10,000	Individual: \$7,500 Family: \$15,000	Individual: \$6,500 Family: \$13,000
<b>Primary Care Visit</b>	\$50 copay	\$40 copay	20% after deductible	\$20 copay	\$15 copay
<b>Specialist Visit</b>	\$50 copay	\$40 copay	20% after deductible	\$20 copay	\$15 copay
<b>Outpatient Mental Health and Substance Abuse Visits</b>	\$50 copay	\$40 copay	20% after deductible	\$20 copay	\$15 copay
<b>Physical &amp; Occupational Therapy/Chiropractic<sup>2</sup></b>	\$75 copay	\$40 copay	20% after deductible	\$45 copay	\$40 copay
<b>Lab Services (Diagnostic / X-ray)</b>	\$75 copay	\$65 copay	20% after deductible	\$35 copay	\$30 copay
<b>Diagnostic Test X-Rays</b>	\$75 copay	\$65 copay	20% after deductible	\$35 copay	\$30 copay
<b>Urgent Care</b>	\$100 copay	\$80 copay	20% after deductible	\$40 copay	\$30 copay
<b>Emergency Services</b>	\$750 after deductible	30% after deductible	20% after deductible	\$300 copay	\$250 copay
<b>Hospital Inpatient (including Maternity)</b>	30% after deductible	30% after deductible	20% after deductible	\$500 copay	\$375 copay
<b>Pharmacy Summary<sup>3</sup></b>	\$0/\$30/\$150/50%	\$0/\$30/\$150/50%	20%/20%/20%/20% after deductible	\$0/\$30/\$150/50%	\$0/\$25/\$75/50%
<b>Includes Adult Dental and Vision Option<sup>4</sup></b>	Yes	Yes	No	Yes	Yes

\* These plans are available directly from Highmark and are not available on the Pennsylvania Insurance Exchange. They do not qualify for advance premium tax credits or cost-sharing reductions.

<sup>1</sup> This plan has a Non-Embedded deductible. See Disclosures page for more info.

<sup>2</sup> Limit of 30 combined physical and occupational therapy visits per benefit period.

<sup>3</sup> Visit [highmarkacaformulary.com](http://highmarkacaformulary.com) to view our Formulary and see if your drug is covered, and at which tier.

<sup>4</sup> See page 48 for Adult Dental and Vision benefit details.

	Income Level		
	138%-149% FPL		150-199% FPL
	Coverage Level		
	Silver 100	Silver 0	Silver 700
<b>Plan Availability</b>	my Direct Blue EPO Extra Savings Silver 100 my Blue Access PPO Extra Savings Silver 100	my Direct Blue EPO Extra Savings Silver 0 my Blue Access PPO Extra Savings Silver 0	my Direct Blue EPO Extra Savings Silver 700 my Blue Access PPO Extra Savings Silver 700
<b>In-Network Deductible</b>	Individual: \$100 Family: \$200	Individual: \$0 Family: \$0	Individual: \$700 Family: \$1,400
<b>In-Network, Out-of-Pocket Maximum</b>	Individual: \$1,300 Family: \$2,600	Individual: \$1,200 Family: \$2,400	Individual: \$2,850 Family: \$5,700
<b>Primary Care Visit</b>	\$5 copay	\$1 copay	\$25 copay
<b>Specialist Visit</b>	\$5 copay	\$1 copay	\$25 copay
<b>Outpatient Mental Health and Substance Abuse Visits</b>	\$5 copay	\$1 copay	\$25 copay
<b>Speech, Physical, and Occupational Therapy and Chiropractic Care<sup>1</sup></b>	\$5 copay	\$5 copay	\$25 copay
<b>Diagnostic Test Lab Services</b>	\$15 copay	\$5 copay	\$45 copay
<b>Diagnostic Test X-Rays</b>	\$15 copay	\$5 copay	\$45 copay
<b>Urgent Care</b>	\$10 copay	\$5 copay	\$50 copay
<b>Emergency Services</b>	\$100 after deductible	\$75 copay	\$300 after deductible
<b>Hospital Inpatient (including maternity)</b>	10% after deductible	\$100 copay	10% after deductible
<b>Pharmacy Summary<sup>2</sup></b>	\$0/\$5/\$15/50%	\$0/\$5/\$15/50%	\$0/\$10/\$50/50%
<b>Includes Adult Dental and Vision Option<sup>3</sup></b>	Yes	No	Yes

<b>Income Level</b>			
<b>150-199% FPL</b>		<b>200-249% FPL</b>	
<b>Coverage Level</b>			
	<b>Silver 0</b>	<b>Silver 2100</b>	<b>Silver 1050</b>
<b>Plan Availability</b>	my Direct Blue EPO Extra Savings Silver 0  my Blue Access PPO Extra Savings Silver 0	my Direct Blue EPO Extra Savings Silver 2100  my Blue Access PPO Extra Savings Silver 2100	my Direct Blue EPO Extra Savings Silver 1050  my Blue Access PPO Extra Savings Silver 1050
<b>In-Network Deductible</b>	Individual: \$0 Family: \$0	Individual: \$2,100 Family: \$4,200	Individual: \$1,050 Family: \$2,100
<b>In-Network, Out-of-Pocket Maximum</b>	Individual: \$2,800 Family: \$5,600	Individual: \$6,800 Family: \$13,600	Individual: \$5,800 Family: \$11,600
<b>Primary Care Visit</b>	\$15 copay	\$50 copay	\$60 after deductible
<b>Specialist Visit</b>	\$15 copay	\$50 copay	\$60 after deductible
<b>Outpatient Mental Health and Substance Abuse Visits</b>	\$15 copay	\$50 copay	\$60 after deductible
<b>Speech, Physical, and Occupational Therapy and Chiropractic Care<sup>1</sup></b>	\$30 copay	\$75 copay	\$60 after deductible
<b>Diagnostic Test Lab Services</b>	\$25 copay	\$75 copay	\$75 after deductible
<b>Diagnostic Test X-Rays</b>	\$25 copay	\$75 copay	\$75 after deductible
<b>Urgent Care</b>	\$30 copay	\$100 copay	\$120 after deductible
<b>Emergency Services</b>	\$275 copay	\$750 after deductible	\$750 after deductible
<b>Hospital Inpatient (including maternity)</b>	\$375 copay	30% after deductible	\$800 after deductible
<b>Pharmacy Summary<sup>2</sup></b>	\$0/\$10/\$50/50%	\$0/\$30/\$150/50%	\$0/\$30/\$150/50% after deductible
<b>Includes Adult Dental and Vision Option<sup>3</sup></b>	No	Yes	No

<sup>1</sup> Limit of 30 combined physical and occupational therapy visits per benefit period.

<sup>2</sup> Visit [highmarkacaformulary.com](https://highmarkacaformulary.com) to view our Formulary and see if your drug is covered, and at which tier.

<sup>3</sup> See page 48 for Adult Dental and Vision benefit details.

## Coverage Level

### Catastrophic 8700

3 Free PCP visits

### Bronze HSA 6900

### Bronze 3800

### Silver HSA 3250

	Catastrophic 8700	Bronze HSA 6900	Bronze 3800	Silver HSA 3250
<b>Plan Availability</b>	my Direct Blue Lehigh Valley Major Events EPO 8700 my Blue Access Major Events PPO 8700	my Direct Blue Lehigh Valley EPO Bronze 6900 HSA my Blue Access PPO Bronze 6900 HSA	my Direct Blue Lehigh Valley EPO Bronze 3800 my Blue Access PPO Bronze 3800	my Direct Blue Lehigh Valley EPO Silver 3250 HSA my Blue Access PPO Silver 3250 HSA
<b>In-Network Deductible</b>	Individual: \$8,700 Family: \$17,400	Individual: \$6,900 Family: \$13,800	Individual: \$3,800 Family: \$7,600	Individual: \$3,250 Family: \$6,500
<b>In-Network, Out-of-Pocket Maximum</b>	Individual: \$8,700 Family: \$17,400	Individual: \$6,900 Family: \$13,800	Individual: \$8,700 Family: \$17,400	Individual: \$6,900 Family: \$13,800
<b>Primary Care Visit</b>	First 3 visits free, then \$0 after deductible	\$0 after deductible	\$80 copay	\$70 after deductible
<b>Specialist Visit</b>	\$0 after deductible	\$0 after deductible	\$80 copay	\$70 after deductible
<b>Outpatient Mental Health and Substance Abuse Visits</b>	\$0 after deductible	\$0 after deductible	\$80 copay	\$70 after deductible
<b>Speech, Physical, and Occupational Therapy and Chiropractic Care<sup>2</sup></b>	\$0 after deductible	\$0 after deductible	\$80 copay	\$70 after deductible
<b>Diagnostic Test Lab Services</b>	\$0 after deductible	\$0 after deductible	\$65 copay	\$90 after deductible
<b>Diagnostic Test X-Rays</b>	\$0 after deductible	\$0 after deductible	\$140 copay	\$90 after deductible
<b>Urgent Care</b>	\$0 after deductible	\$0 after deductible	\$100 copay	\$140 after deductible
<b>Emergency Services</b>	\$0 after deductible	\$0 after deductible	50% after deductible	\$750 after deductible
<b>Hospital Inpatient (including maternity)</b>	\$0 after deductible	\$0 after deductible	50% after deductible	\$900 after deductible
<b>Pharmacy Summary<sup>3</sup></b>	\$0/\$0/\$0/\$0 after deductible	\$0/\$0/\$0/\$0 after deductible	50%/50%/50%/50% after deductible	\$0/\$30/\$150/50% after deductible
<b>Includes Adult Dental and Vision Option<sup>4</sup></b>	No	No	Yes	No



## Coverage Level

	Silver 2900	Silver 2600*	Gold HSA 1400 <sup>1*</sup>	Gold 0	Premier Gold 0
<b>Plan Availability</b>	my Direct Blue Lehigh Valley EPO Silver 2900  my Blue Access PPO Silver 2900	my Direct Blue Lehigh Valley EPO Silver 2600*  my Blue Access PPO Silver 2600*	my Direct Blue Lehigh Valley EPO Gold 1400 HSA <sup>1*</sup>  my Blue Access PPO Gold 1400 HSA <sup>1*</sup>	my Direct Blue Lehigh Valley EPO Gold 0  my Blue Access PPO Gold 0	my Direct Blue Lehigh Valley EPO Premier Gold 0  my Blue Access PPO Premier Gold 0
<b>In-Network Deductible</b>	Individual: \$2,900 Family: \$5,800	Individual: \$2,600 Family: \$5,200	Individual: \$1,400 Family: \$2,800	Individual: \$0 Family: \$0	Individual: \$0 Family: \$0
<b>In-Network, Out-of-Pocket Maximum</b>	Individual: \$7,800 Family: \$15,600	Individual: \$8,500 Family: \$17,000	Individual: \$5,000 Family: \$10,000	Individual: \$7,500 Family: \$15,000	Individual: \$6,500 Family: \$13,000
<b>Primary Care Visit</b>	\$50 copay	\$40 copay	20% after deductible	\$20 copay	\$15 copay
<b>Specialist Visit</b>	\$50 copay	\$40 copay	20% after deductible	\$20 copay	\$15 copay
<b>Outpatient Mental Health and Substance Abuse Visits</b>	\$50 copay	\$40 copay	20% after deductible	\$20 copay	\$15 copay
<b>Physical &amp; Occupational Therapy/Chiropractic<sup>2</sup></b>	\$75 copay	\$40 copay	20% after deductible	\$45 copay	\$40 copay
<b>Lab Services (Diagnostic / X-ray)</b>	\$75 copay	\$65 copay	20% after deductible	\$35 copay	\$30 copay
<b>Diagnostic Test X-Rays</b>	\$75 copay	\$65 copay	20% after deductible	\$35 copay	\$30 copay
<b>Urgent Care</b>	\$100 copay	\$80 copay	20% after deductible	\$40 copay	\$30 copay
<b>Emergency Services</b>	\$750 after deductible	30% after deductible	20% after deductible	\$300 copay	\$250 copay
<b>Hospital Inpatient (including Maternity)</b>	30% after deductible	30% after deductible	20% after deductible	\$500 copay	\$375 copay
<b>Pharmacy Summary<sup>3</sup></b>	\$0/\$30/\$150/50%	\$0/\$30/\$150/50%	20%/20%/20%/20% after deductible	\$0/\$30/\$150/50%	\$0/\$25/\$75/50%
<b>Includes Adult Dental and Vision Option<sup>4</sup></b>	Yes	Yes	No	Yes	Yes

\* These plans are available directly from Highmark and are not available on the Pennsylvania Insurance Exchange. They do not qualify for advance premium tax credits or cost-sharing reductions.

<sup>1</sup> This plan has a Non-Embedded deductible. See Disclosures page for more info.

<sup>2</sup> Limit of 30 combined physical and occupational therapy visits per benefit period.

<sup>3</sup> Visit [highmarkacaformulary.com](https://www.highmarkacaformulary.com) to view our Formulary and see if your drug is covered, and at which tier.

<sup>4</sup> See page 48 for Adult Dental and Vision benefit details.

	Income Level		
	138%-149% FPL		150-199% FPL
	Coverage Level		
	Silver 100	Silver 0	Silver 700
<b>Plan Availability</b>	my Direct Blue Lehigh Valley EPO Extra Savings Silver 100 my Blue Access PPO Extra Savings Silver 100	my Direct Blue Lehigh Valley EPO Extra Savings Silver 0 my Blue Access PPO Extra Savings Silver 0	my Direct Blue Lehigh Valley EPO Extra Savings Silver 700 my Blue Access PPO Extra Savings Silver 700
<b>In-Network Deductible</b>	Individual: \$100 Family: \$200	Individual: \$0 Family: \$0	Individual: \$700 Family: \$1,400
<b>In-Network, Out-of-Pocket Maximum</b>	Individual: \$1,300 Family: \$2,600	Individual: \$1,200 Family: \$2,400	Individual: \$2,850 Family: \$5,700
<b>Primary Care Visit</b>	\$5 copay	\$1 copay	\$25 copay
<b>Specialist Visit</b>	\$5 copay	\$1 copay	\$25 copay
<b>Outpatient Mental Health and Substance Abuse Visits</b>	\$5 copay	\$1 copay	\$25 copay
<b>Speech, Physical, and Occupational Therapy and Chiropractic Care<sup>1</sup></b>	\$5 copay	\$5 copay	\$25 copay
<b>Diagnostic Test Lab Services</b>	\$15 copay	\$5 copay	\$45 copay
<b>Diagnostic Test X-Rays</b>	\$15 copay	\$5 copay	\$45 copay
<b>Urgent Care</b>	\$10 copay	\$5 copay	\$50 copay
<b>Emergency Services</b>	\$100 after deductible	\$75 copay	\$300 after deductible
<b>Hospital Inpatient (including maternity)</b>	10% after deductible	\$100 copay	10% after deductible
<b>Pharmacy Summary<sup>2</sup></b>	\$0/\$5/\$15/50%	\$0/\$5/\$15/50%	\$0/\$10/\$50/50%
<b>Includes Adult Dental and Vision Option<sup>3</sup></b>	Yes	No	Yes

<b>Income Level</b>			
<b>150-199% FPL</b>		<b>200-249% FPL</b>	
<b>Coverage Level</b>			
	<b>Silver 0</b>	<b>Silver 2100</b>	<b>Silver 1050</b>
<b>Plan Availability</b>	my Direct Blue Lehigh Valley EPO Extra Savings Silver 0  my Blue Access PPO Extra Savings Silver0	my Direct Blue Lehigh Valley EPO Extra Savings Silver 2100  my Blue Access PPO Extra Savings Silver 2100	my Direct Blue Lehigh Valley EPO Extra Savings Silver 1050  my Blue Access PPO Extra Savings Silver 1050
<b>In-Network Deductible</b>	Individual: \$0 Family: \$0	Individual: \$2,100 Family: \$4,200	Individual: \$1,050 Family: \$2,100
<b>In-Network, Out-of-Pocket Maximum</b>	Individual: \$2,800 Family: \$5,600	Individual: \$6,800 Family: \$13,600	Individual: \$5,800 Family: \$11,600
<b>Primary Care Visit</b>	\$15 copay	\$50 copay	\$60 after deductible
<b>Specialist Visit</b>	\$15 copay	\$50 copay	\$60 after deductible
<b>Outpatient Mental Health and Substance Abuse Visits</b>	\$15 copay	\$50 copay	\$60 after deductible
<b>Speech, Physical, and Occupational Therapy and Chiropractic Care<sup>1</sup></b>	\$30 copay	\$75 copay	\$60 after deductible
<b>Diagnostic Test Lab Services</b>	\$25 copay	\$75 copay	\$75 after deductible
<b>Diagnostic Test X-Rays</b>	\$25 copay	\$75 copay	\$75 after deductible
<b>Urgent Care</b>	\$30 copay	\$100 copay	\$120 after deductible
<b>Emergency Services</b>	\$275 copay	\$750 after deductible	\$750 after deductible
<b>Hospital Inpatient (including maternity)</b>	\$375 copay	30% after deductible	\$800 after deductible
<b>Pharmacy Summary<sup>2</sup></b>	\$0/\$10/\$50/50%	\$0/\$30/\$150/50%	\$0/\$30/\$150/50% after deductible
<b>Includes Adult Dental and Vision Option<sup>3</sup></b>	No	Yes	No

<sup>1</sup> Limit of 30 combined physical and occupational therapy visits per benefit period.

<sup>2</sup> Visit [highmarkacaformulary.com](https://www.highmarkacaformulary.com) to view our Formulary and see if your drug is covered, and at which tier.

<sup>3</sup> See page 48 for Adult Dental and Vision benefit details.

## Coverage Level

### Catastrophic 8700

3 Free PCP visits

### Bronze HSA 6900

### Bronze 3800

### Silver HSA 3250

	Catastrophic 8700	Bronze HSA 6900	Bronze 3800	Silver HSA 3250
<b>Plan Availability</b>	my Blue Access Major Events PPO 8700	my Blue Access PPO Bronze 6900 HSA	my Blue Access PPO Bronze 3800	my Blue Access PPO Silver 3250 HSA
<b>In-Network Deductible</b>	Individual: \$8,700 Family: \$17,400	Individual: \$6,900 Family: \$13,800	Individual: \$3,800 Family: \$7,600	Individual: \$3,250 Family: \$6,500
<b>In-Network, Out-of-Pocket Maximum</b>	Individual: \$8,700 Family: \$17,400	Individual: \$6,900 Family: \$13,800	Individual: \$8,700 Family: \$17,400	Individual: \$6,900 Family: \$13,800
<b>Primary Care Visit</b>	First 3 visits free, then \$0 after deductible	\$0 after deductible	\$80 copay	\$70 after deductible
<b>Specialist Visit</b>	\$0 after deductible	\$0 after deductible	\$80 copay	\$70 after deductible
<b>Outpatient Mental Health and Substance Abuse Visits</b>	\$0 after deductible	\$0 after deductible	\$80 copay	\$70 after deductible
<b>Speech, Physical, and Occupational Therapy and Chiropractic Care<sup>2</sup></b>	\$0 after deductible	\$0 after deductible	\$80 copay	\$70 after deductible
<b>Diagnostic Test Lab Services</b>	\$0 after deductible	\$0 after deductible	\$65 copay	\$90 after deductible
<b>Diagnostic Test X-Rays</b>	\$0 after deductible	\$0 after deductible	\$140 copay	\$90 after deductible
<b>Urgent Care</b>	\$0 after deductible	\$0 after deductible	\$100 copay	\$140 after deductible
<b>Emergency Services</b>	\$0 after deductible	\$0 after deductible	50% after deductible	\$750 after deductible
<b>Hospital Inpatient (including maternity)</b>	\$0 after deductible	\$0 after deductible	50% after deductible	\$900 after deductible
<b>Pharmacy Summary<sup>3</sup></b>	\$0/\$0/\$0/\$0 after deductible	\$0/\$0/\$0/\$0 after deductible	50%/50%/50%/50% after deductible	\$0/\$30/\$150/50% after deductible
<b>Includes Adult Dental and Vision Option<sup>4</sup></b>	No	No	Yes	No

## Coverage Level

	Silver 2900	Silver 2600*	Gold HSA 1400 <sup>1*</sup>	Gold 0	Premier Gold 0
<b>Plan Availability</b>	my Blue Access PPO Silver 2900	my Blue Access PPO Silver 2600*	my Blue Access PPO Gold 1400 HSA <sup>1*</sup>	my Blue Access PPO Gold 0	my Blue Access PPO Premier Gold 0
<b>In-Network Deductible</b>	Individual: \$2,900 Family: \$5,800	Individual: \$2,600 Family: \$5,200	Individual: \$1,400 Family: \$2,800	Individual: \$0 Family: \$0	Individual: \$0 Family: \$0
<b>In-Network, Out-of-Pocket Maximum</b>	Individual: \$7,800 Family: \$15,600	Individual: \$8,500 Family: \$17,000	Individual: \$5,000 Family: \$10,000	Individual: \$7,500 Family: \$15,000	Individual: \$6,500 Family: \$13,000
<b>Primary Care Visit</b>	\$50 copay	\$40 copay	20% after deductible	\$20 copay	\$15 copay
<b>Specialist Visit</b>	\$50 copay	\$40 copay	20% after deductible	\$20 copay	\$15 copay
<b>Outpatient Mental Health and Substance Abuse Visits</b>	\$50 copay	\$40 copay	20% after deductible	\$20 copay	\$15 copay
<b>Speech, Physical, and Occupational Therapy and Chiropractic Care<sup>2</sup></b>	\$75 copay	\$40 copay	20% after deductible	\$45 copay	\$40 copay
<b>Diagnostic Test Lab Services</b>	\$75 copay	\$65 copay	20% after deductible	\$35 copay	\$30 copay
<b>Diagnostic Test X-Rays</b>	\$75 copay	\$65 copay	20% after deductible	\$35 copay	\$30 copay
<b>Urgent Care</b>	\$100 copay	\$80 copay	20% after deductible	\$40 copay	\$30 copay
<b>Emergency Services</b>	\$750 after deductible	30% after deductible	20% after deductible	\$300 copay	\$250 copay
<b>Hospital Inpatient (including maternity)</b>	30% after deductible	30% after deductible	20% after deductible	\$500 copay	\$375 copay
<b>Pharmacy Summary<sup>3</sup></b>	\$0/\$30/\$150/50%	\$0/\$30/\$150/50%	20%/20%/20%/20% after deductible	\$0/\$30/\$150/50%	\$0/\$25/\$75/50%
<b>Includes Adult Dental and Vision Option<sup>4</sup></b>	Yes	Yes	No	Yes	Yes

\* Plans are available directly from Highmark and are not available on the Pennsylvania Insurance Exchange. They do not qualify for advance premium tax credits or cost-sharing reductions.

\*\* If you're a Centre county resident, you must live in one of the following ZIP codes to enroll in one of these plans: 16801, 16802, 16803, 16804, 16805, 16820, 16823, 16826, 16827, 16828, 16832, 16835, 16841, 16844, 16851, 16852, 16853, 16854, 16856, 16864, 16865, 16868, 16870, 16872, 16875, 16877, or 16882

<sup>1</sup> This plan has a Non-Embedded deductible. See Disclosures page for more info.

<sup>2</sup> Limit of 30 combined physical and occupational therapy visits per benefit period.

<sup>3</sup> Visit [highmarkacaformulary.com](https://www.highmarkacaformulary.com) to view our Formulary and see if your drug is covered, and at which tier.

<sup>4</sup> See page 48 for Adult Dental and Vision benefit details.

<b>Income Level</b>			
<b>138%-149% FPL</b>		<b>150-199% FPL</b>	
<b>Coverage Level</b>			
	<b>Silver 100</b>	<b>Silver 0</b>	<b>Silver 700</b>
<b>Plan Availability</b>	my Blue Access PPO Extra Savings Silver 100	my Blue Access PPO Extra Savings Silver 0	my Blue Access PPO Extra Savings Silver 700
<b>In-Network Deductible</b>	Individual: \$100 Family: \$200	Individual: \$0 Family: \$0	Individual: \$700 Family: \$1,400
<b>In-Network, Out-of-Pocket Maximum</b>	Individual: \$1,300 Family: \$2,600	Individual: \$1,200 Family: \$2,400	Individual: \$2,850 Family: \$5,700
<b>Primary Care Visit</b>	\$5 copay	\$1 copay	\$25 copay
<b>Specialist Visit</b>	\$5 copay	\$1 copay	\$25 copay
<b>Outpatient Mental Health and Substance Abuse Visits</b>	\$5 copay	\$1 copay	\$25 copay
<b>Speech, Physical, and Occupational Therapy and Chiropractic Care<sup>1</sup></b>	\$5 copay	\$5 copay	\$25 copay
<b>Diagnostic Test Lab Services</b>	\$15 copay	\$5 copay	\$45 copay
<b>Diagnostic Test X-Rays</b>	\$15 copay	\$5 copay	\$45 copay
<b>Urgent Care</b>	\$10 copay	\$5 copay	\$50 copay
<b>Emergency Services</b>	\$100 after deductible	\$75 copay	\$300 after deductible
<b>Hospital Inpatient (including maternity)</b>	10% after deductible	\$100 copay	10% after deductible
<b>Pharmacy Summary<sup>2</sup></b>	\$0/\$5/\$15/50%	\$0/\$5/\$15/50%	\$0/\$10/\$50/50%
<b>Includes Adult Dental and Vision Option<sup>3</sup></b>	Yes	No	Yes

<b>Income Level</b>			
<b>150-199% FPL</b>		<b>200-249% FPL</b>	
<b>Coverage Level</b>			
	<b>Silver 0</b>	<b>Silver 2100</b>	<b>Silver 1050</b>
<b>Plan Availability</b>	my Blue Access PPO Extra Savings Silver 0	my Blue Access PPO Extra Savings Silver 2100	my Blue Access PPO Extra Savings Silver 1050
<b>In-Network Deductible</b>	Individual: \$0 Family: \$0	Individual: \$2,100 Family: \$4,200	Individual: \$1,050 Family: \$2,100
<b>In-Network, Out-of-Pocket Maximum</b>	Individual: \$2,800 Family: \$5,600	Individual: \$6,800 Family: \$13,600	Individual: \$5,800 Family: \$11,600
<b>Primary Care Visit</b>	\$15 copay	\$50 copay	\$60 after deductible
<b>Specialist Visit</b>	\$15 copay	\$50 copay	\$60 after deductible
<b>Outpatient Mental Health and Substance Abuse Visits</b>	\$15 copay	\$50 copay	\$60 after deductible
<b>Speech, Physical, and Occupational Therapy and Chiropractic Care<sup>1</sup></b>	\$30 copay	\$75 copay	\$60 after deductible
<b>Diagnostic Test Lab Services</b>	\$25 copay	\$75 copay	\$75 after deductible
<b>Diagnostic Test X-Rays</b>	\$25 copay	\$75 copay	\$75 after deductible
<b>Urgent Care</b>	\$30 copay	\$100 copay	\$120 after deductible
<b>Emergency Services</b>	\$275 copay	\$750 after deductible	\$750 after deductible
<b>Hospital Inpatient (including maternity)</b>	\$375 copay	30% after deductible	\$800 after deductible
<b>Pharmacy Summary<sup>2</sup></b>	\$0/\$10/\$50/50%	\$0/\$30/\$150/50%	\$0/\$30/\$150/50% after deductible
<b>Includes Adult Dental and Vision Option<sup>3</sup></b>	No	Yes	No

\*\* If you're a Centre county resident, you must live in one of the following ZIP codes to enroll in one of these plans: 16801, 16802, 16803, 16804, 16805, 16820, 16823, 16826, 16827, 16828, 16832, 16835, 16841, 16844, 16851, 16852, 16853, 16854, 16856, 16864, 16865, 16868, 16870, 16872, 16875, 16877, or 16882

<sup>1</sup> Limit of 30 combined physical and occupational therapy visits per benefit period.

<sup>2</sup> Visit [highmarkacaformulary.com](https://www.highmarkacaformulary.com) to view our Formulary and see if your drug is covered, and at which tier.

<sup>3</sup> See page 48 for Adult Dental and Vision benefit details.

# For all plans with Adult Dental and Vision — these are your vision benefits.

In-network	
Vision Benefits	Frequency - Once Every:
Eye Examination (including dilation when professionally indicated)	12 months
Spectacle Lenses	12 months
Frame	12 months
Contact Lenses (in lieu of eyeglass lenses)	12 months

Copayments	
Eye Examination	\$0
Spectacle Lenses	\$0
Contact Lens Evaluation, Fitting, and Follow-Up Care	n/a

Eyeglass Benefit - Frame		Average Retail Value	
<b>Non-Collection Frame Allowance (Retail):</b>		Up to \$130	Up to \$60
<b>Davis Vision Frame Collection<sup>1</sup> (in lieu of Allowance):</b>	Fashion level	Up to \$125	Included
	Designer level	Up to \$175	\$20 copayment
	Premier level	Up to \$225	\$40 copayment

Eyeglass Benefit - Spectacle Lenses	Average Retail Value	Member Charges
Clear plastic single-vision, lined bifocal, trifocal or lenticular lenses (any Rx)	\$60-\$120	Included
Oversize Lenses	\$20	Included
Tinting of Plastic Lenses	\$20	\$11
Scratch-Resistant Coating	\$25-\$40	Included
Scratch Protection Plan Single Vision	\$60-\$120	\$20
Scratch Protection Plan Multifocal	\$60-\$120	\$40
Polycarbonate Lenses <sup>2</sup>	\$60-\$75	\$0 or \$30
Ultraviolet Coating	\$25-\$30	\$12
Standard Anti-Reflective (AR) Coating	\$50-\$70	\$35
Premium AR Coating	\$65-\$90	\$48
Ultra AR Coating	\$100-\$125	\$60
Standard Progressive Lenses	\$150-\$195	\$50
Premium Progressives (Varilux®, etc.)	\$195-\$225	\$90
Ultra Progressive Lenses	\$225-\$300	\$140
Intermediate-Vision Lenses	\$150-\$175	\$30
High-Index Lenses	\$90-\$150	\$55
Polarized Lenses	\$95-\$110	\$75
Plastic Photosensitive Lenses	\$95-\$150	\$65



<b>Contact Lens Benefit (in lieu of eyeglasses)</b>		
<b>Non-Collection Contact Lenses: Materials Allowance</b>		Up to \$85
<b>Collection Contact Lenses<sup>1</sup> (in lieu of Allowance): Materials</b>	Disposable	Covered In Full
	Planned Replacement	Covered In Full
	Evaluation, Fitting, and Follow-up Care	Included
<b>Medically Necessary Contact Lenses (with prior approval)</b>	Materials, Evaluation, Fitting, and Follow-Up Care	Included

<sup>1</sup> Collection is available at most participating independent provider offices. Collection is subject to change. Collection is inclusive of select torics and multifocals.

<sup>2</sup> Polycarbonate lenses are covered in full for dependent children, monocular patients and patients with prescriptions +/- 6.00 diopters or greater.

## **One-year eyeglass breakage warranty included.**

**Adult Vision benefits utilize the Davis Vision Network. There is no out-of-network coverage. Davis Vision is a separate company that administers Highmark vision benefits.**

To find a provider in the Davis Vision Network, visit [highmarkblueshield.com](https://highmarkblueshield.com) and select the **Find a Doctor** or **Pharmacy** tab.

# For all plans with Adult Dental and Vision — these are your dental benefits.

Dental Benefits			
Annual Deductible Per Insured Person		\$50 Per Calendar Year	
Annual Deductible Per Insured Family		\$150 Per Calendar Year	
Annual Maximum Per Insured Person		\$1,250	
Covered Services:	Policy Pays		Elimination Period
	In Network	Out of Network	
Oral Evaluations (Exams)	100%	0%	None
Radiographs (All X-Rays)	100%	0%	None
Prophylaxis (Cleanings)	100%	0%	None
Palliative Treatment (Emergency)	100%	0%	None
Sealants	100%	0%	None
Space Maintainers	100%	0%	None
Repairs of Crowns, Inlays, Onlays, Fixed Partial Dentures, and Dentures	80%	0%	6 Months
Basic Restorative (Fillings, etc.)	80%	0%	None
Simple Extractions	80%	0%	6 Months
Surgical Extractions	50%	0%	6 Months
Complex Oral Surgery	50%	0%	6 Months
Endodontics (Root canals, etc.)	50%	0%	6 Months
General Anesthesia and/or Nitrous Oxide and/or IV Sedation	80%	0%	6 Months
Nonsurgical Periodontics	50%	0%	6 Months
Periodontal Maintenance	50%	0%	None
Surgical Periodontics	50%	0%	6 Months
Crowns, Inlays, Onlays	50%	0%	6 Months
Prosthetics (Fixed Partial Dentures, Dentures)	50%	0%	6 Months
Adjustments and Repairs of Prosthetics	80%	0%	None
Implant Services	0%	0%	None
Consultations	100%	0%	None
Orthodontics	0%	0%	None

The percentage in the Policy Pays column is the percentage of the plan allowance that the Policy will pay for Covered Services provided by a Participating Dentist. Participating Dentists accept the plan allowance as payment in full.

Adult Dental benefits utilize the Concordia Advantage Network. Members must use a United Concordia provider. There is no Out-of-Network coverage for this benefit. United Concordia Companies, Inc., is a separate company that administers pediatric dental benefits for Highmark members.

To find a dental provider in the Advantage Network, visit [highmarkblueshield.com](http://highmarkblueshield.com) and select the **Find a Doctor** or **Pharmacy** tab.

---

# Health care lingo, translated.

When you're choosing plans, you're bound to see certain terms over and over. Here's a cheat sheet for a few of the most important ones.

## **BlueCard**

A program that connects independent Blue Plans across the country. It gives Blue Plan members access to in-network coverage while outside their plan area. The level of coverage depends on your chosen plan.

## **COINSURANCE**

The percentage of total cost of care you may owe for certain covered services after reaching your deductible. For example, if your plan pays 80%, you pay 20%.

## **COPAY**

The set amount you pay for certain covered services, could be \$20 for a doctor visit or \$30 for a specialist visit. If you owe a copay, you must pay it when you check in for your visit.

## **DEDUCTIBLE**

The set amount you pay for covered health services or drug costs before your plan starts paying.

## **EMERGENCY SERVICES**

Care for a condition needing immediate attention to avoid severe harm.

## **FORMULARY**

A list of drugs selected by the plan based on certain clinical factors. The list of medicines is sorted by tier. Lower tiers usually mean lower copays.

## **HABILITATIVE SERVICES**

Health care services that help you keep, acquire, or improve skills and functioning for daily living following disease, illness, or injury.

## **HEALTH SAVINGS ACCOUNT (HSA)**

An account to set aside pre-tax money to pay for qualified medical expenses. You can only have an HSA if you have a Qualified High-Deductible Health Plan.

## **HIGH-DEDUCTIBLE HEALTH PLAN (HDHP)**

A plan that usually comes with a lower premium because you pay more for health care services up front before the insurance company starts to pay. These plans are often combined with a health savings account.

## **IN-NETWORK PROVIDER**

A doctor or hospital that has an agreement with the plan and will accept plan allowance plus member copay or coinsurance as payment in full.

## **OUT-OF-NETWORK PROVIDER**

A doctor or hospital that does not have an agreement with the plan and does not have to accept plan allowance as payment in full.

## **OUT-OF-POCKET MAXIMUM**

The most you'd pay for covered care in a benefit period or year. If you reach this amount, your plan pays 100% after that.

## **PLAN ALLOWANCE**

The set amount an in-network provider has agreed to accept for a covered health care service. Member responsibility for the service can be found in the Outline of Coverage. The plan pays the difference between the plan allowance and the member responsibility. If an out-of-network provider bills for more than the plan allowance, you may have to pay the difference. If your plan does not include out-of-network coverage and you receive care, other than emergency or urgent care, you may be responsible for the entire cost..

## **PREMIUM**

The monthly amount paid for coverage.

## **PREVENTIVE CARE SERVICES**

Routine care like screenings and checkups that help you healthy. Refer to the Highmark Preventive Schedule for the list of preventive care services.

## **PRIMARY CARE PROVIDER (PCP)**

The medical professional you see for most of your basic care, like yearly preventive visits and screenings.

## **QUALIFIED HEALTH PLAN (QHP)**

A plan that has been certified by the Health Insurance Marketplace and meets all ACA requirements. That includes providing the 10 Essential Health Benefits and staying inside the limits for deductibles, copays, and out-of-pocket maximums.

## **REHABILITATIVE SERVICES**

Care that helps you keep, get back, or improve skills and functioning after you were sick, hurt, or disabled.

## **RETAIL CLINIC**

Walk-in centers for less complex health needs, generally open in the evenings and on weekends.

## **URGENT CARE CENTER**

A walk-in center for when you have a condition that's serious enough to need care right away, but not serious enough for a trip to the emergency room.

## **VIRTUAL VISIT**

A real-time office visit with a doctor at a remote location, conducted via interactive audio and streaming video telecommunications.

---

---

# There's a whole lot of legalese around these plans. We put it all in one place for you.

---

## HIGHMARK DISCLOSURES

### Important Benefit Details

**\*Non-Embedded Family Deductible:** For an agreement covering more than one (1) family member, the family deductible must be satisfied before the plan will begin to pay benefits for covered services for any covered family member. When the family deductible has been satisfied, the family deductible will be considered to have been satisfied for all family members, the plan will begin to pay benefits for covered services for all covered family members for the remainder of the benefit period (January 1, 2022– December 31, 2022). The family deductible can be met by one family member or a combination of members.

**\*\*Blue Distinction Centers (BDC)** met overall quality measures, developed with input from the medical community. A Local Blue Plan may require additional criteria for providers located in its own service area; for details, contact your Local Blue Plan. Blue Distinction Centers+ (BDC+) also met cost measures that address consumers' need for affordable healthcare. Each provider's cost of care is evaluated using data from its Local Blue Plan. Providers in CA, ID, NY, PA, and WA may lie in two Local Blue Plans' areas, resulting in two evaluations for cost of care; and their own Local Blue Plans decide whether one or both cost of care evaluation(s) must meet BDC+ national criteria. Blue Distinction Total Care ("Total Care") providers have met national criteria based on provider commitment to deliver value-based care to a population of Blue members. Total Care+ providers also met a goal of delivering quality care at a lower total cost relative to other providers in their area. Program details are displayed on [www.bcbs.com](http://www.bcbs.com). Individual outcomes may vary. For details on a provider's in-network status or your own policy's coverage, contact your Local Blue Plan and ask your provider before making an appointment. Neither Blue Cross Blue Shield Association nor any Blue Plans are responsible for noncovered charges or other losses or damages resulting from Blue Distinction or other provider finder information or care received from Blue Distinction or other providers.

**Aggregate/Embedded Family Deductible Plans:** For an Agreement covering more than one (1) family member, as each Member satisfies their individual Deductible, the Plan will begin to pay benefits for Covered Services for that Member for the remainder of the Benefit Period (January 1, 2022– December 31, 2022), whether or not the entire family Deductible has been satisfied. When the family Deductible has been satisfied, the family Deductible will be considered to have been satisfied for all remaining covered family members. Not every individual member must meet the individual deductible for the family deductible to be met and no individual member may satisfy the entire family Deductible.

You are responsible for out-of-pocket costs each benefit period (January 1, 2022 – December 31, 2022) up to the maximum amount shown. Thereafter, the plan pays 100% of the Plan Allowance. During the remainder of the benefit period. This amount does not include amounts in excess of the plan allowance.

Diagnostic Lab services include Laboratory and Pathology. Diagnostic Lab services require one copay (or, for some plans, coinsurance after deductible) per date of service and type of service.

Basic Diagnostic Services include Diagnostic X-ray, diagnostic medical and allergy testing. Basic diagnostic services require one copay (or, for some plans, coinsurance after deductible) per date of service and type of service.

Advanced Imaging services include, but are not limited to, CAT scan, CTA, MRI, MRA, PET scan, and PET/CT Scan. Advanced Imaging services require one copay (or, for some plans, coinsurance after deductible) per date of service and type of service.

Pediatric vision benefits utilize the Davis Vision Network. Pediatric dental benefits utilize United Concordia's Advantage Network.

Essential Formulary prescription drug cost covers a 90-day (Mail Order) or 31-day (Retail) supply. All plans have a four-tier closed formulary prescription drug structure.

Qualified High Deductible Health Plans may be coupled with a Health Savings Account (HSA). However, certain cost-sharing reductions (CSR) or plan variations of this plan that are offered through the Health Insurance Marketplace are not intended to be used with an HSA. If you have questions, please check with your financial advisor.

BlueCard coverage is available for emergency or urgent care for all plans when you are away from home. Routine care is also covered for some plans. Consult your plan documents for additional information. BlueCard is a registered mark of the Blue Cross and Blue Shield Association, an association of independent Blue Cross and Blue Shield Plans.

Blues on Call is a service mark of the Blue Cross Blue Shield Association.

Highmark Blue Shield is a Qualified Health Plan insurer in the Health Insurance Marketplace.

Please note that information regarding the Patient Protection and Affordable Care Act of 2010 (a.k.a. "PPACA", "Affordable Care Act", "ACA", and/or "Health Care Reform"), as amended, and/or any other law, does not constitute legal or tax advice and is subject to change based upon the issuance of new guidance and/or change in laws. This information is intended to provide general information only and does not attempt to give you advice that relates to your specific circumstances. The information regarding any health plan will be subject to the terms of the applicable health plan benefit agreement. Any review of materials, request for information, or application does not obligate you to enroll for coverage. Please request the Outline of Coverage for details on benefits, conditions, and exclusions. Providing your information is voluntary.

To find more information about Highmark's benefits and operating procedures, such as accessing the drug formulary or using network providers, please go to [DiscoverHighmark.com/QualityAssurance](http://DiscoverHighmark.com/QualityAssurance); or for a paper copy, call 1-855-873-4108 (TTY/TDD 711).

Blue Distinction Centers (BDC) met overall quality measures for patient safety and outcomes, developed with input from the medical community. A Local Blue Plan may require additional criteria for providers located in its own service area; for details, contact your Local Blue Plan. Blue Distinction Centers+ (BDC+) also met cost measures that address consumers' need for affordable healthcare. Each provider's cost of care is evaluated using data from its Local Blue Plan. Providers in CA, ID, NY, PA, and WA may lie in two Local Blue Plans' areas, resulting in two evaluations for cost of care; and their own Local Blue Plans decide whether one or both cost of care evaluation(s) must meet BDC+ national

criteria. National criteria for BDC and BDC+ are displayed on [www.bcbs.com](http://www.bcbs.com). Individual outcomes may vary. For details on a provider's in-network status or your own policy's coverage, contact your Local Blue Plan and ask your provider before making an appointment. Neither Blue Cross and Blue Shield Association nor any Blue Plans are responsible for non-covered charges or other losses or damages resulting from Blue Distinction or other provider finder information or care received from Blue Distinction or other providers.

Blue Distinction is a registered mark of the Blue Cross and Blue Shield Association, an association of independent Blue Cross and Blue Shield Plans.

Blue365 is a registered mark of the Blue Cross Blue Shield Association.

You should confirm the network status of a provider prior to receiving services. You can call My Care Navigator at 1-888-Blue-428 to confirm if a doctor or facility will be in network in 2022.

American Well is an independent company that provides telemedicine services. American Well does not provide Blue Cross and/or Blue Shield products or services and it is solely responsible for its telemedicine services.

Sharecare, RealAge Test and AskMD are registered trademarks of Sharecare, LLC., an independent and separate company that provides a consumer care engagement platform for Highmark members. Sharecare is solely responsible for its programs and services, which are not a substitute for professional medical advice, diagnosis or treatment. Sharecare does not endorse any specific product service or treatment. Health care plans and the benefits thereunder are subject to the terms of the applicable benefit agreement.

My Care Navigator is a service mark of Highmark Inc.

Papa Pals is a separate company that provides companionship and assistance with everyday tasks to Highmark members.

TruHearing is a separate company that provides hearing aid devices and services that TruHearing is providing to Highmark or Highmark members.

Highmark Blue Shield is an independent licensee of the Blue Cross Blue Shield Association.

### Discrimination is Against the Law

The Claims Administrator/Insurer complies with applicable Federal civil rights laws and does not discriminate on the basis of race, color, national origin, age, disability, or sex, including sex stereotypes and gender identity. The Claims Administrator/Insurer does not exclude people or treat them differently because of race, color, national origin, age, disability, or sex assigned at birth, gender identity or recorded gender. Furthermore, the Claims Administrator/Insurer will not deny or limit coverage to any health service based on the fact that an individual's sex assigned at birth, gender identity, or recorded gender is different from the one to which such health service is ordinarily available. The Claims Administrator/Insurer will not deny or limit coverage for a specific health service related to gender transition if such denial or limitation results in discriminating against a transgender individual. The Claims Administrator/Insurer:

- Provides free aids and services to people with disabilities to communicate effectively with us, such as:
  - Qualified sign language interpreters
  - Written information in other formats (large print, audio, accessible electronic formats, other formats)
- Provides free language services to people whose primary language is not English, such as:
  - Qualified interpreters
  - Information written in other languages

If you need these services, contact the Civil Rights Coordinator.

If you believe that the Claims Administrator/Insurer has failed to provide these services or discriminated in another way on the basis of race, color, national origin, age, disability, or sex, including sex stereotypes and gender identity, you can file a grievance with: Civil Rights Coordinator, P.O. Box 22492, Pittsburgh, PA 15222, Phone: 1-866-286-8295, TTY: 711, Fax: 412-544-2475, email: [CivilRightsCoordinator@highmarkhealth.org](mailto:CivilRightsCoordinator@highmarkhealth.org). You can file a grievance in person or by mail, fax, or email. If you need help filing a grievance, the Civil Rights Coordinator is available to help you. You can also file a civil rights complaint with the U.S. Department of Health and Human Services, Office for Civil Rights electronically through the Office for Civil Rights Complaint Portal, available at <https://ocrportal.hhs.gov/ocr/portal/lobby.jsf>, or by mail or phone at:

U.S. Department of Health and Human Services  
200 Independence Avenue, SW  
Room 509F, HHH Building  
Washington, D.C. 20201  
1-800-368-1019, 800-537-7697 (TDD)

Complaint forms are available at <http://www.hhs.gov/ocr/office/file/index.html>.

If you speak English, language assistance services, free of charge, are available to you. Call 1-888-269-8412.

Si usted habla español, servicios de asistencia lingüística, de forma gratuita, están disponibles para usted. Llame al 1-888-269-8412.

如果您说中文，可向您提供免费语言协助服务。  
請致電 1-888-269-8412。

Nếu quý vị nói tiếng Việt, chúng tôi cung cấp dịch vụ hỗ trợ ngôn ngữ miễn phí cho quý vị. Xin gọi số 1-888-269-8412.

한국어를 사용하시는 분들을 위해 무료 통역이 제공됩니다.  
1-888-269-8412 로 전화.

Kung nagsasalita ka ng Tagalog, may makukuha kang mga libreng serbisyong tulong sa wika. Tumawag sa 1-888-269-8412.

Если вы говорите по-русски, вы можете воспользоваться бесплатными услугами языковой поддержки. Звоните 1-888-269-8412.

إذا كنت تتحدث اللغة العربية، فهناك خدمات المعونة في اللغة المجانية متاحة لك. اتصل على الرقم  
. 1-888-269-8412

Si se Kreyòl Ayisyen ou pale, gen sèvis entèprèt, gratis-ticheri, ki la pou ede w.  
Rele nan 1-888-269-8412.

Si vous parlez français, les services d'assistance linguistique, gratuitement, sont à votre disposition. Appelez au 1-888-269-8412.

Dla osób mówiących po polsku dostępna jest bezpłatna pomoc językowa.  
Zadzwoń 1-888-269-8412.

Se a sua língua é o português, temos atendimento gratuito para você no seu idioma. Ligue para 1-888-269-8412.

Se parla italiano, per lei sono disponibili servizi di assistenza linguistica a titolo gratuito. Chiamare l'1-888-269-8412.

Wenn Sie Deutsch sprechen, steht Ihnen unsere fremdsprachliche Unterstützung kostenlos zur Verfügung. Rufen Sie 1-888-269-8412.

日本語が母国語の方は言語アシスタンス・サービスを無料でご利用いただけます。 1-888-269-8412 を呼び出します。

اگر شما به زبان فارسی صحبت می کنید، خدمات کمک زبان رایگان  
با تماس با شماره 1-888-269-8412 .



---

**Highmark, a member of the Blue Cross Blue Shield Association,\* has been providing secure and stable health care coverage for over 80 years. With 1 in 3 Americans covered by a Blue Cross and/or Blue Shield plan, when you're with Highmark, you're in good company.**

---

\* The Blue Cross Blue Shield Association is an association of independent Blue Cross Blue Shield plans.

---

# Ready to (en)roll?

## Cool. Here's how to do it:

- By phone: 1-855-400-9159
- Online: [Highmark2022plans.com](https://Highmark2022plans.com)
- By contacting your agent or broker
- At a Highmark Direct store or walk-in center near you

**The Shops at Cedar Point**  
305 South Cedar Crest Boulevard  
Allentown, PA 18103  
484-773-1669

**Colonial Commons  
Shopping Center**  
5072 Jonestown Road  
Harrisburg, PA 17112  
717-678-6442

**Lower Nazareth Commons**  
3770 Dryland Way  
Easton, PA 18045  
610-881-6525

**Mill Creek Square**  
2350 Lincoln Highway East  
Lancaster, PA 17602  
717-400-9809

**Silver Spring Square**  
6416 Carlisle Pike  
Mechanicsburg, PA 17050  
717-516-1978

**To schedule an appointment at a  
Highmark Direct store near you, visit  
[HighmarkDirectAppointments.com](https://HighmarkDirectAppointments.com).**



Because Life.™