



# Zero reasons your health can't be a priority.

Individual and family plan offerings

For benefit period:  
January 1 to December 31, 2024

Plans may be offered by Highmark Blue Cross Blue Shield or Highmark Coverage Advantage.



Because Life.™





# Say hello to a great health plan.

Shopping for your own health insurance? With Highmark, you get the coverage and benefits that matter most to you. This guide will help you find an affordable plan that checks all the boxes.

Looking for something in particular? Click on the headings below to jump to that section.

---

<b>Why choose Highmark?</b> .....	<b>4</b>
<b>Affordable Care Act basics.</b> .....	<b>14</b>
Enrollment checklist. ....	15
Enrollment dates .....	16
Metal levels .....	17
Ways to save .....	18
Financial help .....	19
<b>Products and plan designs</b> .....	<b>20</b>
<b>Plan details.</b> .....	<b>28</b>
<b>Vision and dental.</b> .....	<b>48</b>
<b>Helpful health insurance definitions.</b> .....	<b>58</b>
<b>In-network facilities</b> .....	<b>59</b>
<b>Legal info</b> .....	<b>69</b>

---

# Why choose a Highmark health plan?

Here are a few big benefits  
right off the top of our heads.



1

## Expert care, close to home.

Highmark invests big in a patient-first approach to care, with easy access to high-quality, lower-cost health care services in your area. You can also seek care from Allegheny Health Network (AHN), a variety of independent providers, and, with some plans, UPMC.



2

## Coverage that travels with you.

All of our plans come with access to **BlueCard®**. It connects you to the largest physician and hospital networks in the U.S. with over 1.8 million providers, including 97% of all hospitals.\*

Your coverage extends to many top-rated, out-of-state facilities, like:

- Cleveland Clinic
- Duke University Medical Center
- Inova Health System Hospitals
- Johns Hopkins Hospital
- Marietta Memorial Hospitals
- MD Anderson Cancer Center
- Memorial Sloan Kettering Cancer Center
- NewYork-Presbyterian
- TidalHealth
- University of Maryland Medical Center
- Winchester Medical Center

And, you're covered in 190 countries too — it's just like getting care close to home. Keep in mind that BlueCard covers routine,\*\* emergency, and urgent care for most plans. It only covers emergency and urgent care for Together Blue and Together Blue Virtual Choice plans.



3

## No red tape.

**See whichever in-network doctors you want to see — no referral needed.** Call 1-888-BLUE-428, and we'll find a specialist for you. No hoops, no hoopla.

---

\* According to the Blue Cross Blue Shield Association.

\*\* Certain services may require you to work with your BlueCard-participating provider to obtain prior authorization.







4

## All your care, all in one plan.

Healthy eyes and teeth are important parts of overall health and regular checkups can help you stay ahead of potential problems down the road. It's especially important for kids, which is why all our plans come with pediatric dental and vision benefits.

**Our plans with “Adult Dental and Vision” in their name include these benefits, so there’s no need to purchase separate plans.**

---



5

## Easy access to top-performing specialists.

Only doctors who consistently deliver safe, effective treatments make the **Blue Distinction**<sup>®</sup> list. When you use our Find a Doctor tool, the Blue Distinction logo will appear by their names to help you choose a top-performing specialist for any care you need.

---



6

## Mental health care that’s exactly the right fit.

Our Mental Well-Being solution provides expanded, quicker access to mental health care. A personalized care plan will help guide you to the right resources based on your needs.

---

**And that’s just for starters.**

Turn the page for even more reasons to choose Highmark.

---

**We make it easier  
for you to get the  
care you want.**





#### VIRTUAL HEALTH

## Face-to-face with a doctor, 24/7.

Get a diagnosis, treatment plan, or prescription any time, right from your phone or computer. Best of all, the virtual health services provided by AHN or Well360 Virtual Health are also available through many in-network providers. That's laid-back-in-a-recliner easy.

---



#### BLUES ON CALL<sup>SM</sup>

## Answers from a health pro, 24/7.

Medical concerns during off hours? Just call 1-888-BLUE-428 to get support from a registered nurse or a health coach any time and put your worries to bed.

---



#### THE HIGHMARK MEMBER APP AND WEBSITE

## Your entire plan at your fingertips.

No more searching for old files or waiting on snail mail. Your digital ID card, Find a Doctor tool, deductible progress, and claims status are all available on the My Highmark app or at [myhighmark.com](https://myhighmark.com). You can also access **MyChart** via the app or website. If you use AHN doctors and facilities, MyChart allows you to communicate with those doctors, view test results, and more.

---



#### VIRTUAL PHYSICAL CARE

## Physical care from the comfort of home.

This personalized digital physical care program helps with back, joint, or muscle pain from the comfort of your own home.

---





#### MY CARE NAVIGATOR<sup>SM</sup>

## Your appointments, booked for you.

It's as simple as calling **1-888-BLUE-428**. We'll help you find the in-network doctor you need and reserve some space on their calendar. Which means less on-hold music for you.

---



#### HEALTH SAVINGS ACCOUNT

## Helping you save for today and tomorrow.

Health savings accounts let you put money away for things like medical costs, vision and dental services, and prescriptions. They're available for qualified high-deductible plans with "HSA" in the plan name.

---



**Need help with  
your health goals?**

**We've got you covered.**



#### FITNESS

## Hitting the gym has never been easier.

All our plans include a fitness extra with discounted rates and access to 10,000+ gyms nationwide.\* You'll also get discounts for acupuncture and chiropractic care, nutritional counseling, personal training, and more.

---



#### WELLNESS

## Personalized support for health goals.

Looking to lose weight? Quit smoking? Be more active? Get guidance based on your lifestyle, wellness tools, and access to experienced wellness coaches to make healthy choices and keep you motivated. Once you're enrolled, visit [myhighmark.com](https://myhighmark.com).

---



#### BLUE365®

## Discounts to help you stay healthy and active.

With Blue365, you get exclusive discounts on travel, car rentals, and even clothing and footwear. Check out member-only deals at [blue365deals.com](https://blue365deals.com).

---

**Let's take a minute  
to cover the basics  
of ACA plans.**



---

# Here's your ACA Enrollment Checklist.

You'll need this info for each person who will be covered on your plan.

- Date of birth**
- Social Security number**  
(or legal immigrant documents)
- Income documentation for all household members, even if they won't be covered by the plan**  
(pay stubs, W-2 forms, or wage and tax statements)
- Current health insurance policy numbers**  
(if applicable)
- Info on any health insurance you or your family could get from your job**

**All set? Great. Let's move on to the essentials.**

---

# Enrollment dates

There are two ways you can enroll in or change your ACA coverage. One is a fixed period that happens every year. The other is for special cases that can happen any time.

---

## 1 Open Enrollment Period

**November 1, 2023 – January 15, 2024**

If you sign up by December 15, 2023, your plan takes effect on January 1, 2024.

If you sign up between December 16, 2023, and January 15, 2024, your plan takes effect on February 1, 2024.

---

## 2 Special Enrollment Period

**Can happen any time throughout the year**

During a Special Enrollment Period, you can only get or change coverage if you have a qualifying life event. Examples include losing your existing coverage, a new addition to the family, getting married, or moving to a new area where you can't keep your current plan. Many Special Enrollment Periods only last 60 days from the qualifying life event.

If you think you're eligible for a Special Enrollment Period, you may be asked to submit documents to verify it. You can go to **highmark.com** for more information.

---

# Metal levels

ACA plans\* are broken into four categories based on how you and your plan share the costs of your health care. Just so you know, metal levels reflect cost-sharing\*\* differences only – which means you get the same quality of care at any level.

## Bronze



**60%**  
of costs covered  
by your plan

**40%**  
out-of-pocket  
costs

If you don't use a lot of health care services and/or want to keep premium payments low, a Bronze plan might be for you.

## Silver



**70%**  
of costs covered  
by your plan

**30%**  
out-of-pocket  
costs

If you want to balance premiums with out-of-pocket costs, Silver plans might be the way to go.

## Gold



**80%**  
of costs covered  
by your plan

**20%**  
out-of-pocket  
costs

If you use health care services somewhat frequently and/or want low out-of-pocket costs for most commonly used services, you might want to consider a Gold plan.

## Extra Savings Silver



**73-94%**  
of costs covered  
by your plan

**6-27%**  
out-of-pocket  
costs

If you're CSR-eligible, Extra Savings Silver plans give you lower out-of-pocket costs.

Financial help in the form of advance premium tax credits (APTCs) or cost-sharing reductions (CSRs) are available only on plans purchased through [pennie.com](https://www.pennie.com).

\* Catastrophic plans are available if you're under 30 or have a financial hardship. They're for people who do not go to the doctor frequently or only go to the doctor when there's an emergency. Highmark does not offer Platinum plans in Pennsylvania.

\*\*The portion of health care services that you pay out of pocket. This generally includes deductibles, coinsurance, and copays.



---

# Ways to save

**Good news:** There are two ways available to save for ACA members.  
**Even better news:** Nearly 90% of our ACA members qualify to save.

## Advance premium tax credits (APTC)

APTCs may be applied — in advance — to lower what you pay each month for your premium on any level **Pennie.com** plan except Catastrophic.

## Cost-sharing reductions (CSR)

CSRs lower out-of-pocket costs that you may pay at the time of service for doctor visits, lab tests, drugs, and other covered services. CSR plans offer lower deductibles, copays, and coinsurance. You can only get these savings if you enroll in an Extra Savings Silver plan.

**You can qualify for both an APTC and CSR.**

## Extra ACA assistance

The Inflation Reduction Act lowers the cost of health plans for middle- and lower-income individuals and families. It may provide more aid even if you've previously qualified for financial help. And it makes it easier to qualify if you've been denied in the past.

Your savings can be significant. **See for yourself.**

---

### Kyle

Single, 40 years old,  
non-smoker  
Annual income: \$20,170

**Before:** \$50 monthly premium

**After:** \$0 monthly premium

**Savings: \$600/year**

### Dean and Vanessa

Married couple,  
64 years old, non-smokers  
Annual income: \$78,930

**Before:** \$2,741 monthly premium

**After:** \$559 monthly premium

**Savings: \$26,184/year**

---

Premiums and advance premium tax credits (APTC) will vary by county. The APTC can lower the monthly premium. Examples are based on the second-lowest cost Silver plan available on **Pennie.com** in a given area. The price of this plan is used to calculate premium subsidies.

# Financial help

To see if you're eligible for financial help, locate your qualifying income and household size on the chart below. Then refer to the Base or Extra Savings plans for your county to find the plans that meet your needs.

Even if you don't qualify for cost-sharing reductions, you may be eligible for advance premium tax credits. Please refer to the Base plan options for your county.

## What is the income for those covered under your health plan?

Who needs coverage?	Eligible for Medicaid	Eligible for CSRs and APTCs			Eligible for APTCs
	Medicaid Eligible Range (138% or less FPL)	Extra Savings Silver Plans 138–149% CSR plans	150–199% CSR plans	200–249% CSR plans	Base 250% or more
Single	Less than \$20,120	\$20,121 - \$21,869	\$21,870 - \$29,159	\$29,160 - \$36,449	\$36,450 or more
Family of 2	Less than \$27,214	\$27,215 - \$29,579	\$29,580 - \$39,439	\$39,440 - \$49,299	\$49,300 or more
Family of 3	Less than \$34,307	\$34,308 - \$37,289	\$37,290 - \$49,719	\$49,720 - \$62,149	\$62,150 or more
Family of 4	Less than \$41,400	\$41,401 - \$44,999	\$45,000 - \$59,999	\$60,000 - \$74,999	\$75,000 or more
Family of 5	Less than \$48,493	\$48,494 - \$52,709	\$52,710 - \$70,279	\$70,280 - \$87,849	\$87,850 or more
Family of 6	Less than \$55,586	\$55,587 - \$60,419	\$60,420 - \$80,559	\$80,560 - \$100,699	\$100,700 or more
Family of 7	Less than \$62,680	\$62,681 - \$68,129	\$68,130 - \$90,839	\$90,840 - \$113,549	\$113,550 or more
Family of 8	Less than \$69,773	\$69,774 - \$75,839	\$75,840 - \$101,119	\$101,120 - \$126,399	\$126,400 or more

Most individuals and families with household incomes 100% or more of the federal poverty limit (FPL) will qualify for premium tax credits. These credits help lower the cost of health insurance coverage and are based on the second-lowest-cost Silver plan available in your area on **Pennie.com**. The second-lowest-cost Silver plan is also known as the “benchmark plan.” Premium tax credits vary by income. Households with incomes 150% or less of the FPL will pay no premium for the benchmark plan. Those households with annual incomes 400% or more of the FPL will pay no more than 8.5% of their household income on health insurance premiums for the benchmark plan.

Income below 138% FPL: If your income is below 138% FPL and your state has expanded Medicaid coverage, you qualify for Medicaid based only on your income.\*

American Indians and Alaska Natives who are members of federally recognized tribes are eligible for cost-sharing reductions at alternative dollar thresholds.

This chart is only applicable for coverage in 2024 and in the 48 contiguous states and the District of Columbia. For families/households with more than 8 persons, add \$5,140 for each additional person.

\* HHS Poverty Guidelines for 2023 (March 14, 2023). Retrieved from <https://aspe.hhs.gov/topics/poverty-economic-mobility/poverty-guidelines>.

**Check to see if you qualify for one or both types of help.**

**Call 833-796-0888.**

# 2024 Highmark products and plan designs

Phew, that was a lot of good info. Now, let's take a look at the products and plans available in your area for 2024.

---

# You get all the essentials.

You get access to the 10 Essential Health Benefits — plus coverage for preexisting conditions.

**They include:**

- 1** Outpatient care
- 2** Emergency services
- 3** Hospitalization  
(like surgery and overnight stays)
- 4** Pregnancy, maternity, and newborn care
- 5** Mental health and substance use disorder services
- 6** Prescription drugs
- 7** Laboratory services
- 8** Rehabilitative and habilitative services and devices
- 9** Preventive and wellness services and chronic disease management
- 10** Pediatric services, including dental and vision care

---

# Our networks and products

No matter what plan you choose, you get in-network access to top-quality care, close to home. You can even see in-network specialists without a referral. Whatever your health care needs and budget, we have a plan for you. All you have to do is choose.

## Together Blue EPO

### The most affordable Highmark plan in western Pennsylvania.

Together Blue EPO gives you access to Allegheny Health Network (AHN) and select independent providers.\* You'll gain access to a dedicated Together Connect Team — a one-stop shop that can connect you with resources including scheduling assistance.

Together Blue EPO also offers a product called Together Blue Virtual Choice EPO. See page 25 for more information.

Plus, all Together Blue plans give you coast-to-coast coverage for emergency and urgent care with BlueCard.

## my Direct Blue EPO

### In-network access to top-quality care throughout western Pennsylvania, plus full BlueCard access coast to coast.

my Direct Blue EPO gives you in-network access to AHN, as well as many community hospitals and doctors who deliver high-quality, lower-cost care.\*\* And with the BlueCard program, you get in-network access to providers outside of Pennsylvania for routine, emergency, and urgent care, too.

## my Blue Access PPO

### Comprehensive in-network access throughout western Pennsylvania — including all AHN and UPMC hospitals.

my Blue Access PPO gives you in-network access to Highmark's largest network of doctors and hospitals — including AHN and UPMC. With a PPO, you also get the flexibility to see out-of-network providers. And with the BlueCard program, you get in-network access to providers outside of Pennsylvania for routine, emergency, and urgent care, too.

Check out page 59 for in-network facilities.

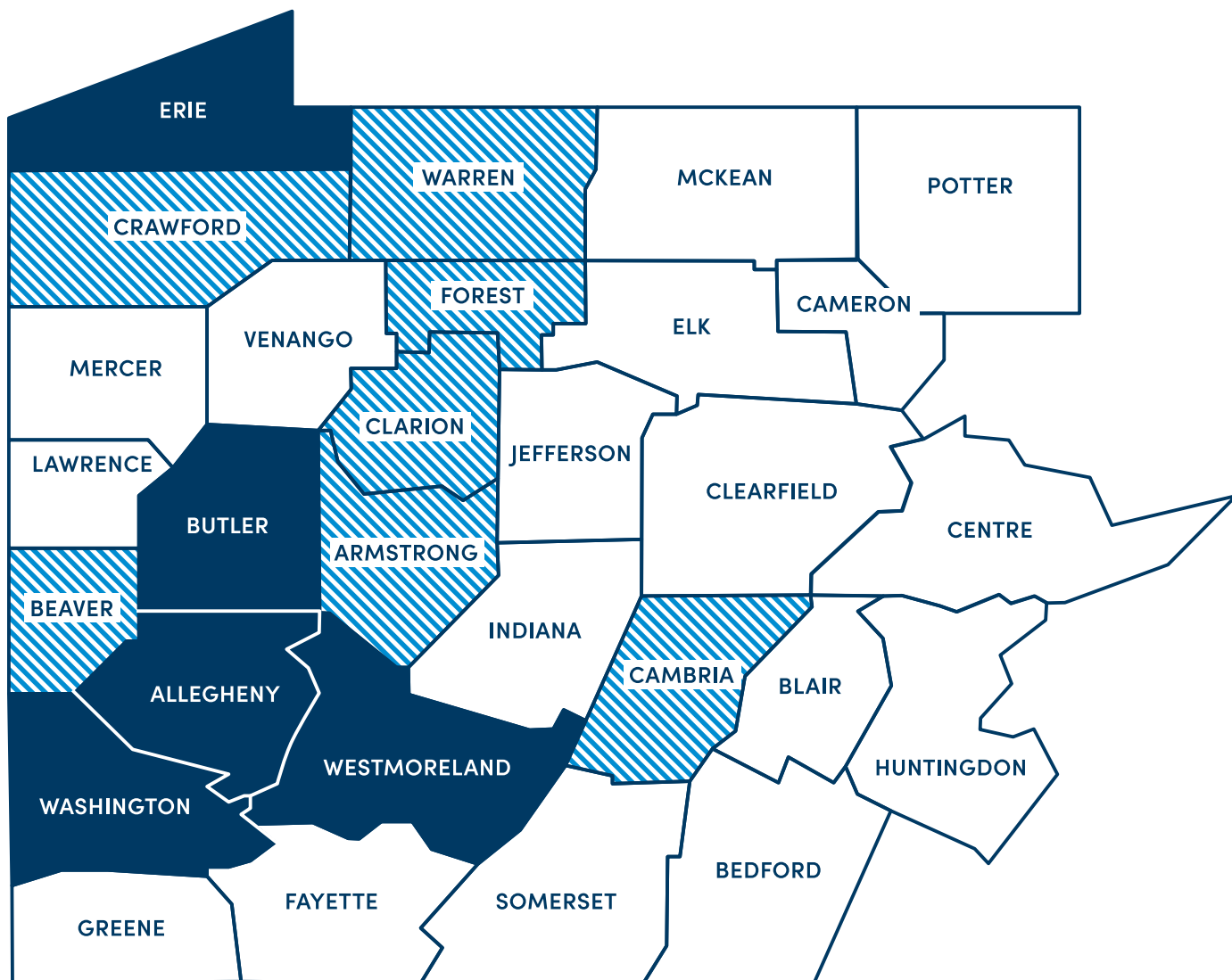
\* Care received from out-of-network providers is not covered, except for emergency and urgent situations.




\*\* Certain services may require you to work with your BlueCard-participating provider to obtain prior authorization.



---

## Plans are available for residents of the counties highlighted below.



-  Together Blue EPO, my Direct Blue EPO, and my Blue Access PPO
-  my Direct Blue EPO and my Blue Access PPO
-  my Blue Access PPO

To see if your provider is in network, visit [highmark.com](https://www.highmark.com) and click **Find a Doctor or Pharmacy.**



---

## New plan for 2024

# Meet Together Blue Virtual Choice

With Together Blue Virtual Choice, you can take control of your care. This lower-cost health plan offers convenient virtual benefits.

You can see providers almost instantly, making it easier to find times that work with your schedule. And it helps keep costs down too — **you get \$0 virtual visits for PCPs, specialists, behavioral health, and urgent care.**

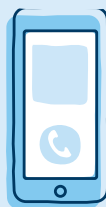
Plus, with our Together Connect concierge service, you get your own customer service rep. **That means every time you call with a question, you'll speak with the same person.**

## The innovative care you want

Together Blue Virtual Choice offers the latest technology that makes it easier for you to get the care you need.

### TytoHome

This telehealth solution provides a free smart device that allows a virtual care provider to check your ears, throat, lungs, heart, and skin in real time.



#### Virtual Physical Care

This personalized digital physical care program helps with back, joint, or muscle pain from the comfort of your own home.

#### Onduo Diabetes Management

If you have type 1 or 2 diabetes, this program offers a spectrum of digital care options to help you better manage your condition.

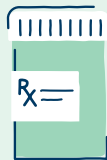
---

# Bronze 7100 HSA — Custom Drug Benefit plan

Offered with Together Blue EPO, my Direct Blue EPO, and my Blue Access PPO

This plan allows you to save for your care with a health savings account (HSA) and provides low out-of-pocket costs on select prescriptions.

An HSA lets you put money away into a savings account that you can use for things like medical costs, vision and dental services, and prescriptions.



With the custom drug benefit, Highmark pays 100% of the costs for many preventive and maintenance drugs immediately. There's no need to meet the deductible. For a complete list of covered drugs, visit [highmark.link/cdbwpa](https://highmark.link/cdbwpa).

Free preventive and maintenance drugs include:

- Eliquis 5 mg tablet
- rosuvastatin calcium  
5, 10, 20 mg tablet (Crestor)
- venlafaxine HCL ER  
150 mg capsule (Effexor)
- Jardiance 10, 25 mg tablet
- ezetimibe 10 mg tablet (Zetia)
- Trulicity 1.5 mg/5.0 ml pen
- Ozempic 0.25–0.5 mg/dose pen
- Januvia 100 mg tablet
- Xarelto 20 mg tablet
- Breo Ellipta 100–25 mcg inhaler
- budesonide-formoterol fumarate  
160 - 4.5 mcg inhaler (Symbicort)

Also included in the list are 20 of the most filled prescriptions. They include drugs for things like diabetes, asthma, heart conditions, anxiety, and depression.



---

# Premier Silver and Gold plans

Our Premier Silver and Gold plans offer some of our lowest copays — \$0 for Premier Silver plans and \$15 for Premier Gold plans. You'll also have lower out-of-pocket costs on covered services. Included in these plans are bonus benefits like a \$25 over-the-counter quarterly allowance and access to TruHearing.



## Over-the-counter benefit

You'll get a \$25 allowance on certain over-the-counter products per quarter for every member covered by your plan. You can use it for things like minor wound care, ibuprofen, and allergy medication. It's convenient too. To place an order, visit [shophighmarkotc.com](https://shophighmarkotc.com). Items are shipped directly to your home.



## TruHearing

**TruHearing**<sup>®</sup> can help lower copays on hearing aids. Plus, you can receive a hearing evaluation, as well as training, setup, fine-tuning, and adjustments from an in-network TruHearing provider without ever leaving your home. All you need is a smartphone, tablet, or computer. To learn more about TruHearing, visit [truhearing.com/highmark-hs](https://truhearing.com/highmark-hs).

**Looking for  
plan details?**

**You're in the right place.**

---

To make it easier, we've sorted our plans by what's available where you live.

Just find your county and jump to that section.

---

**Allegheny, Butler, Erie, Washington, and Westmoreland counties**

Base plan options .....	31
Extra Savings plan options .....	34

**Armstrong, Beaver, Cambria, Clarion, Crawford, Forest, and Warren counties**

Base plan options .....	37
Extra Savings plan options .....	40

**Bedford, Blair, Cameron, Centre,\* Clearfield, Elk, Fayette, Greene, Huntingdon, Indiana, Jefferson, Lawrence, McKean, Mercer, Potter, Somerset, and Venango counties**

Base plan options .....	43
Extra Savings plan options .....	46

**Vision and dental benefits**

---

\* If you're a Centre county resident, you must live in one of the following ZIP codes to enroll in one of these plans: 16677, 16686, 16829, 16845, 16859, 16866, 16874

You'll see plan summaries here. If you want any plan's full benefit list, visit [highmarksbcs.com](https://highmarksbcs.com) or get a paper copy by calling **1-833-258-0188** (TTY/TDD 711).

**Allegheny, Butler,  
Erie, Washington, and  
Westmoreland counties**



## Coverage Level

### Catastrophic 9450

3 free PCP visits

### Bronze 8900

### Bronze 7100 HSA –

Custom Drug Benefit

### Bronze 3800

	Catastrophic 9450 3 free PCP visits	Bronze 8900	Bronze 7100 HSA – Custom Drug Benefit	Bronze 3800
<b>Plan Availability</b>	Together Blue Major Events EPO 9450 – 3 free PCP visits my Direct Blue Major Events EPO 9450 – 3 free PCP visits my Blue Access Major Events PPO 9450 – 3 free PCP visits	Together Blue EPO Bronze 8900 my Direct Blue EPO Bronze 8900 my Blue Access PPO Bronze 8900	Together Blue EPO Bronze 7100 HSA – Custom Drug Benefit my Direct Blue EPO Bronze 7100 HSA – Custom Drug Benefit my Blue Access PPO Bronze 7100 HSA – Custom Drug Benefit	Together Blue EPO Bronze 3800 my Direct Blue EPO Bronze 3800 my Blue Access PPO Bronze 3800
<b>In-Network Deductible</b>	Individual: \$9,450 Family: \$18,900	Individual: \$8,900 Family: \$17,800	Individual: \$7,100 Family: \$14,200	Individual: \$3,800 Family: \$7,600
<b>In-Network, Out-of-Pocket Maximum</b>	Individual: \$9,450 Family: \$18,900	Individual: \$8,900 Family: \$17,800	Individual: \$7,100 Family: \$14,200	Individual: \$9,200 Family: \$18,400
<b>Primary Care Visit</b>	\$0 after deductible; First 3 visits \$0 (not subject to deductible)	\$0 after deductible	\$0 after deductible	\$65 copay
<b>Specialist Visit</b>	\$0 after deductible	\$0 after deductible	\$0 after deductible	\$65 copay
<b>Outpatient Mental Health and Substance Abuse Visits</b>	\$0 after deductible	\$0 after deductible	\$0 after deductible	\$65 copay
<b>Speech, Physical, and Occupational Therapy and Chiropractic Care<sup>1</sup></b>	\$0 after deductible	\$0 after deductible	\$0 after deductible	\$65 copay
<b>Diagnostic Test (Lab/X-ray)</b>	\$0 after deductible	\$0 after deductible	\$0 after deductible	Lab: \$65 copay X-ray: \$150 copay
<b>Urgent Care<sup>2</sup></b>	\$0 after deductible	\$0 after deductible	\$0 after deductible	\$100 copay
<b>Emergency Services</b>	\$0 after deductible	\$0 after deductible	\$0 after deductible	50% after deductible
<b>Hospital Inpatient (including facility and professional)<sup>3</sup></b>	\$0 after deductible	\$0 after deductible	\$0 after deductible	50% after deductible
<b>Pharmacy Summary<sup>4</sup></b>	\$0/\$0/\$0/\$0 after deductible	\$0/\$0/\$0/\$0 after deductible	Select Rx: \$0 <sup>5</sup> not subject to deductible All other Rx: \$0/\$0/\$0/\$0 after deductible	50%/50%/50%/50% after deductible
<b>Includes Dental and Vision Option<sup>6</sup></b>	No	No	No	Yes

<sup>1</sup> Limit of 30 combined physical and occupational therapy visits per benefit period. Limit does not apply to therapy services for the treatment of mental health or substance abuse.

<sup>2</sup> The copayment, if any, does not apply to urgent care services prescribed for the treatment of mental health or substance abuse.

<sup>3</sup> The hospital copay applies to admission. Additional copays may be due for imaging, testing, etc. Please refer to the plan's contract for additional information.

<sup>4</sup> Visit [highmarkacaformulary.com](http://highmarkacaformulary.com) to view our Formulary and see if your drug is covered, and at which tier.

<sup>5</sup> To see a full list of drugs that are covered at \$0 prior to reaching your deductible, visit [highmark.link/cdbwpa](http://highmark.link/cdbwpa).

<sup>6</sup> See pages 50-52 for adult dental and vision benefit details.

	Coverage Level		
	Silver 7000	Premier Silver 2900	Silver 3500*
<b>Plan Availability</b>	Together Blue EPO Silver 7000 my Direct Blue EPO Silver 7000 my Blue Access PPO Silver 7000	Together Blue EPO Premier Silver 2900 my Direct Blue EPO Premier Silver 2900 my Blue Access PPO Premier Silver 2900	Together Blue EPO Silver 3500* my Direct Blue EPO Silver 3500* my Blue Access PPO Silver 3500*
<b>In-Network Deductible</b>	Individual: \$7,000 Family: \$14,000	Individual: \$2,900 Family: \$5,800	Individual: \$3,500 Family: \$7,000
<b>In-Network, Out-of-Pocket Maximum</b>	Individual: \$9,450 Family: \$18,900	Individual: \$8,500 Family: \$17,000	Individual: \$9,350 Family: \$18,700
<b>Primary Care Visit</b>	\$55 copay	\$75 copay	\$45 copay
<b>Specialist Visit</b>	\$55 copay	\$75 copay	\$45 copay
<b>Outpatient Mental Health and Substance Abuse Visits</b>	\$55 copay	\$75 copay	\$45 copay
<b>Speech, Physical, and Occupational Therapy and Chiropractic Care<sup>2</sup></b>	\$55 copay	\$75 copay	\$45 copay
<b>Diagnostic Test (Lab/X-ray)</b>	\$75 copay	\$75 copay	\$75 copay
<b>Urgent Care<sup>3</sup></b>	\$100 copay	\$100 copay	\$90 copay
<b>Emergency Services</b>	\$750 after deductible	\$750 after deductible	30% after deductible
<b>Hospital Inpatient (including facility and professional)<sup>4</sup></b>	\$1,125 after deductible	\$510 after deductible	30% after deductible
<b>Pharmacy Summary<sup>5</sup></b>	\$0/\$30/\$150/50%	\$0/\$30/\$150/50%	\$0/\$30/\$150/50%
<b>Includes Dental and Vision Option<sup>6</sup></b>	No	Yes	Yes

	Coverage Level			
	Gold 1700 HSA <sup>1</sup>	Gold 1500	Gold 0	Premier Gold 0
<b>Plan Availability</b>	Together Blue EPO Gold 1700 HSA <sup>1</sup> my Direct Blue EPO Gold 1700 HSA <sup>1</sup> my Blue Access PPO Gold 1700 HSA <sup>1</sup>	Together Blue Virtual Choice EPO Gold 1500 my Direct Blue EPO Gold 1500 my Blue Access PPO Gold 1500	Together Blue EPO Gold 0 my Direct Blue EPO Gold 0 my Blue Access PPO Gold 0	Together Blue EPO Premier Gold 0 my Direct Blue EPO Premier Gold 0 my Blue Access PPO Premier Gold 0
<b>In-Network Deductible</b>	Individual: \$1,700 Family: \$3,400	Individual: \$1,500 Family: \$3,000	Individual: \$0 Family: \$0	Individual: \$0 Family: \$0
<b>In-Network, Out-of-Pocket Maximum</b>	Individual: \$5,700 Family: \$11,400	Individual: \$8,300 Family: \$16,600	Individual: \$7,500 Family: \$15,000	Individual: \$6,550 Family: \$13,100
<b>Primary Care Visit</b>	\$20 after deductible	\$35 copay	\$20 copay	\$15 copay
<b>Specialist Visit</b>	\$20 after deductible	\$35 copay	\$20 copay	\$15 copay
<b>Outpatient Mental Health and Substance Abuse Visits</b>	\$20 after deductible	\$35 copay	\$20 copay	\$15 copay
<b>Speech, Physical, and Occupational Therapy and Chiropractic Care<sup>2</sup></b>	\$20 after deductible	\$35 copay	\$20 copay	\$40 copay
<b>Diagnostic Test (Lab/X-ray)</b>	\$20 after deductible	\$40 copay	\$35 copay	\$45 copay
<b>Urgent Care<sup>3</sup></b>	\$40 after deductible	\$70 copay	\$40 copay	\$30 copay
<b>Emergency Services</b>	\$175 after deductible	\$350 copay	\$300 copay	\$280 copay
<b>Hospital Inpatient (including facility and professional)<sup>4</sup></b>	\$450 after deductible	\$725 copay after deductible	\$725 copay	\$525 copay
<b>Pharmacy Summary<sup>5</sup></b>	\$0/\$30/\$150/50% after deductible	\$0/\$30/\$150/50%	\$0/\$30/\$150/50%	\$0/\$25/\$75/50%
<b>Includes Dental and Vision Option<sup>6</sup></b>	No	No	Yes	Yes

\* These plans are available directly from Highmark and are not available on the Pennsylvania Insurance Exchange. They do not qualify for advance premium tax credits or cost-sharing reductions.

<sup>1</sup> This plan has a Non-Embedded deductible. See Disclosures page for more information.

<sup>2</sup> Limit of 30 combined physical and occupational therapy visits per benefit period. Limit does not apply to therapy services for the treatment of mental health or substance abuse.

<sup>3</sup> The copayment, if any, does not apply to urgent care services prescribed for the treatment of mental health or substance abuse.

<sup>4</sup> For plans with hospital and professional in-patient copays, the copays include all hospital and professional charges. Please refer to the plan's contract for additional information.

<sup>5</sup> Visit [highmarkacaformulary.com](https://highmarkacaformulary.com) to view our Formulary and see if your drug is covered, and at which tier.

<sup>6</sup> See pages 50-52 for adult dental and vision benefit details.

## Income Level

138-149% FPL

150-199% FPL

## Coverage Level

### Extra Savings Silver

**94%** of costs covered by your plan

**6%** out-of-pocket costs

### Extra Savings Silver

**87%** of costs covered by your plan

**13%** out-of-pocket costs

### Silver 0

### Premier Silver 0

### Silver 0

	Silver 0	Premier Silver 0	Silver 0
<b>Plan Availability</b>	Together Blue EPO Extra Savings Silver 0 my Direct Blue EPO Extra Savings Silver 0 my Blue Access PPO Extra Savings Silver 0	Together Blue EPO Premier Extra Savings Silver 0 my Direct Blue EPO Premier Extra Savings Silver 0 my Blue Access PPO Premier Extra Savings Silver 0	Together Blue EPO Extra Savings Silver 0 my Direct Blue EPO Extra Savings Silver 0 my Blue Access PPO Extra Savings Silver 0
<b>In-Network Deductible</b>	Individual: \$0 Family: \$0	Individual: \$0 Family: \$0	Individual: \$0 Family: \$0
<b>In-Network, Out-of-Pocket Maximum</b>	Individual: \$1,200 Family: \$2,400	Individual: \$1,200 Family: \$2,400	Individual: \$3,150 Family: \$6,300
<b>Primary Care Visit</b>	\$1 copay	\$0 copay	\$15 copay
<b>Specialist Visit</b>	\$1 copay	\$0 copay	\$15 copay
<b>Outpatient Mental Health and Substance Abuse Visits</b>	\$1 copay	\$0 copay	\$15 copay
<b>Speech, Physical, and Occupational Therapy and Chiropractic Care<sup>1</sup></b>	\$1 copay	\$0 copay	\$15 copay
<b>Diagnostic Test (Lab/X-ray)</b>	\$1 copay	\$0 copay	\$25 copay
<b>Urgent Care<sup>2</sup></b>	\$5 copay	\$5 copay	\$30 copay
<b>Emergency Services</b>	\$75 copay	\$75 copay	\$275 copay
<b>Hospital Inpatient (including facility and professional)<sup>3</sup></b>	\$175 copay	\$175 copay	\$450 copay
<b>Pharmacy Summary<sup>4</sup></b>	\$0/\$5/\$15/50%	\$0/\$5/\$15/50%	\$0/\$10/\$50/50%
<b>Includes Dental and Vision Option<sup>5</sup></b>	No	Yes	No

<b>Income Level</b>			
<b>150-199% FPL</b>		<b>200-249% FPL</b>	
<b>Coverage Level</b>			
<b>Extra Savings Silver</b>		<b>Extra Savings Silver</b>	
<b>87%</b> of costs covered by your plan		<b>73%</b> of costs covered by your plan	
<b>13%</b> out-of-pocket costs		<b>27%</b> out-of-pocket costs	
<b>Premier Silver 0</b>		<b>Silver 3700</b>	<b>Premier Silver 2100</b>
<b>Plan Availability</b>	Together Blue EPO Premier Extra Savings Silver 0 my Direct Blue EPO Premier Extra Savings Silver 0 my Blue Access PPO Premier Extra Savings Silver 0	Together Blue EPO Extra Savings Silver 3700 my Direct Blue EPO Extra Savings Silver 3700 my Blue Access PPO Extra Savings Silver 3700	Together Blue EPO Premier Extra Savings Silver 2100 my Direct Blue EPO Premier Extra Savings Silver 2100 my Blue Access PPO Premier Extra Savings Silver 2100
<b>In-Network Deductible</b>	Individual: \$0 Family: \$0	Individual: \$3,700 Family: \$7,400	Individual: \$2,100 Family: \$4,200
<b>In-Network, Out-of-Pocket Maximum</b>	Individual: \$3,150 Family: \$6,300	Individual: \$7,550 Family: \$15,100	Individual: \$7,200 Family: \$14,400
<b>Primary Care Visit</b>	\$0 copay	\$55 copay	\$75 copay
<b>Specialist Visit</b>	\$0 copay	\$55 copay	\$75 copay
<b>Outpatient Mental Health and Substance Abuse Visits</b>	\$0 copay	\$55 copay	\$75 copay
<b>Speech, Physical, and Occupational Therapy and Chiropractic Care<sup>1</sup></b>	\$0 copay	\$55 copay	\$75 copay
<b>Diagnostic Test (Lab/X-ray)</b>	\$40 copay	\$65 copay	\$75 copay
<b>Urgent Care<sup>2</sup></b>	\$10 copay	\$100 copay	\$100 copay
<b>Emergency Services</b>	\$500 copay	\$750 after deductible	\$750 after deductible
<b>Hospital Inpatient (including facility and professional)<sup>3</sup></b>	\$450 copay	\$1,125 after deductible	\$510 after deductible
<b>Pharmacy Summary<sup>4</sup></b>	\$0/\$10/\$50/50%	\$0/\$30/\$150/50%	\$0/\$30/\$150/50%
<b>Includes Dental and Vision Option<sup>5</sup></b>	Yes	No	Yes

<sup>1</sup> Limit of 30 combined physical and occupational therapy visits per benefit period. Limit does not apply to therapy services for the treatment of mental health or substance abuse.

<sup>2</sup> The copayment, if any, does not apply to urgent care services prescribed for the treatment of mental health or substance abuse.

<sup>3</sup> For plans with hospital and professional in-patient copays, the copays include all hospital and professional charges. Please refer to the plan's contract for additional information.

<sup>4</sup> Visit [highmarkacaformulary.com](http://highmarkacaformulary.com) to view our Formulary and see if your drug is covered, and at which tier.

<sup>5</sup> See pages 50-52 for adult dental and vision benefit details.



**Armstrong, Beaver,  
Cambria, Clarion, Crawford,  
Forest, and Warren counties**

	Coverage Level			
	<b>Catastrophic 9450</b> 3 free PCP visits	<b>Bronze 8900</b>	<b>Bronze 7100 HSA –</b> Custom Drug Benefit	<b>Bronze 3800</b>
<b>Plan Availability</b>	my Direct Blue Major Events EPO 9450 – 3 free PCP visits my Blue Access Major Events PPO 9450 – 3 free PCP visits	my Direct Blue EPO Bronze 8900 my Blue Access PPO Bronze 8900	my Direct Blue EPO Bronze 7100 HSA - Custom Drug Benefit my Blue Access PPO Bronze 7100 HSA - Custom Drug Benefit	my Direct Blue EPO Bronze 3800 my Blue Access PPO Bronze 3800
<b>In-Network Deductible</b>	Individual: \$9,450 Family: \$18,900	Individual: \$8,900 Family: \$17,800	Individual: \$7,100 Family: \$14,200	Individual: \$3,800 Family: \$7,600
<b>In-Network, Out-of-Pocket Maximum</b>	Individual: \$9,450 Family: \$18,900	Individual: \$8,900 Family: \$17,800	Individual: \$7,100 Family: \$14,200	Individual: \$9,200 Family: \$18,400
<b>Primary Care Visit</b>	\$0 after deductible; First 3 visits \$0 (not subject to deductible)	\$0 after deductible	\$0 after deductible	\$65 copay
<b>Specialist Visit</b>	\$0 after deductible	\$0 after deductible	\$0 after deductible	\$65 copay
<b>Outpatient Mental Health and Substance Abuse Visits</b>	\$0 after deductible	\$0 after deductible	\$0 after deductible	\$65 copay
<b>Speech, Physical, and Occupational Therapy and Chiropractic Care<sup>1</sup></b>	\$0 after deductible	\$0 after deductible	\$0 after deductible	\$65 copay
<b>Diagnostic Test (Lab/X-ray)</b>	\$0 after deductible	\$0 after deductible	\$0 after deductible	Lab: \$65 copay X-ray: \$150 copay
<b>Urgent Care<sup>2</sup></b>	\$0 after deductible	\$0 after deductible	\$0 after deductible	\$100 copay
<b>Emergency Services</b>	\$0 after deductible	\$0 after deductible	\$0 after deductible	50% after deductible
<b>Hospital Inpatient (including facility and professional)<sup>3</sup></b>	\$0 after deductible	\$0 after deductible	\$0 after deductible	50% after deductible
<b>Pharmacy Summary<sup>4</sup></b>	\$0/\$0/\$0/\$0 after deductible	\$0/\$0/\$0/\$0 after deductible	Select Rx: \$0 <sup>5</sup> not subject to deductible All other Rx: \$0/\$0/\$0/\$0 after deductible	50%/50%/50%/50% after deductible
<b>Includes Dental and Vision Option<sup>6</sup></b>	No	No	No	Yes

<sup>1</sup> Limit of 30 combined physical and occupational therapy visits per benefit period. Limit does not apply to therapy services for the treatment of mental health or substance abuse.

<sup>2</sup> The copayment, if any, does not apply to urgent care services prescribed for the treatment of mental health or substance abuse.

<sup>3</sup> The hospital copay applies to admission. Additional copays may be due for imaging, testing, etc. Please refer to the plan's contract for additional information.

<sup>4</sup> Visit [highmarkacaformulary.com](http://highmarkacaformulary.com) to view our Formulary and see if your drug is covered, and at which tier.

<sup>5</sup> To see a full list of drugs that are covered at \$0 prior to reaching your deductible, visit [highmark.link/cdbwpa](http://highmark.link/cdbwpa).

<sup>6</sup> See pages 50-52 for adult dental and vision benefit details.

	Coverage Level		
	Silver 7000	Premier Silver 2900	Silver 3500*
<b>Plan Availability</b>	my Direct Blue EPO Silver 7000 my Blue Access PPO Silver 7000	my Direct Blue EPO Premier Silver 2900 my Blue Access PPO Premier Silver 2900	my Direct Blue EPO Silver 3500* my Blue Access PPO Silver 3500*
<b>In-Network Deductible</b>	Individual: \$7,000 Family: \$14,000	Individual: \$2,900 Family: \$5,800	Individual: \$3,500 Family: \$7,000
<b>In-Network, Out-of-Pocket Maximum</b>	Individual: \$9,450 Family: \$18,900	Individual: \$8,500 Family: \$17,000	Individual: \$9,350 Family: \$18,700
<b>Primary Care Visit</b>	\$55 copay	\$75 copay	\$45 copay
<b>Specialist Visit</b>	\$55 copay	\$75 copay	\$45 copay
<b>Outpatient Mental Health and Substance Abuse Visits</b>	\$55 copay	\$75 copay	\$45 copay
<b>Speech, Physical, and Occupational Therapy and Chiropractic Care<sup>2</sup></b>	\$55 copay	\$75 copay	\$45 copay
<b>Diagnostic Test (Lab/X-ray)</b>	\$75 copay	\$75 copay	\$75 copay
<b>Urgent Care<sup>3</sup></b>	\$100 copay	\$100 copay	\$90 copay
<b>Emergency Services</b>	\$750 after deductible	\$750 after deductible	30% after deductible
<b>Hospital Inpatient (including facility and professional)<sup>4</sup></b>	\$1,125 after deductible	\$510 after deductible	30% after deductible
<b>Pharmacy Summary<sup>5</sup></b>	\$0/\$30/\$150/50%	\$0/\$30/\$150/50%	\$0/\$30/\$150/50%
<b>Includes Dental and Vision Option<sup>6</sup></b>	No	Yes	Yes

	Coverage Level			
	Gold 1700 HSA <sup>1</sup>	Gold 1500	Gold 0	Premier Gold 0
<b>Plan Availability</b>	my Direct Blue EPO Gold 1700 HSA <sup>1</sup> my Blue Access PPO Gold 1700 HSA <sup>1</sup>	my Direct Blue EPO Gold 1500 my Blue Access PPO Gold 1500	my Direct Blue EPO Gold 0 my Blue Access PPO Gold 0	my Direct Blue EPO Premier Gold 0 my Blue Access PPO Premier Gold 0
<b>In-Network Deductible</b>	Individual: \$1,700 Family: \$3,400	Individual: \$1,500 Family: \$3,000	Individual: \$0 Family: \$0	Individual: \$0 Family: \$0
<b>In-Network, Out-of-Pocket Maximum</b>	Individual: \$5,700 Family: \$11,400	Individual: \$8,300 Family: \$16,600	Individual: \$7,500 Family: \$15,000	Individual: \$6,550 Family: \$13,100
<b>Primary Care Visit</b>	\$20 after deductible	\$35 copay	\$20 copay	\$15 copay
<b>Specialist Visit</b>	\$20 after deductible	\$35 copay	\$20 copay	\$15 copay
<b>Outpatient Mental Health and Substance Abuse Visits</b>	\$20 after deductible	\$35 copay	\$20 copay	\$15 copay
<b>Speech, Physical, and Occupational Therapy and Chiropractic Care<sup>2</sup></b>	\$20 after deductible	\$35 copay	\$20 copay	\$40 copay
<b>Diagnostic Test (Lab/X-ray)</b>	\$20 after deductible	\$40 copay	\$35 copay	\$45 copay
<b>Urgent Care<sup>3</sup></b>	\$40 after deductible	\$70 copay	\$40 copay	\$30 copay
<b>Emergency Services</b>	\$175 after deductible	\$350 copay	\$300 copay	\$280 copay
<b>Hospital Inpatient (including facility and professional)<sup>4</sup></b>	\$450 after deductible	\$725 copay after deductible	\$725 copay	\$525 copay
<b>Pharmacy Summary<sup>5</sup></b>	\$0/\$30/\$150/50% after deductible	\$0/\$30/\$150/50%	\$0/\$30/\$150/50%	\$0/\$25/\$75/50%
<b>Includes Dental and Vision Option<sup>6</sup></b>	No	No	Yes	Yes

\* These plans are available directly from Highmark and are not available on **Pennie.com**. They do not qualify for advance premium tax credits or cost-sharing reductions.

<sup>1</sup> This plan has a Non-Embedded deductible. See Disclosures page for more information.

<sup>2</sup> Limit of 30 combined physical and occupational therapy visits per benefit period. Limit does not apply to therapy services for the treatment of mental health or substance abuse.

<sup>3</sup> The copayment, if any, does not apply to urgent care services prescribed for the treatment of mental health or substance abuse.

<sup>4</sup> For plans with hospital and professional in-patient copays, the copays include all hospital and professional charges. Please refer to the plan's contract for additional information.

<sup>5</sup> Visit [highmarkacaformulary.com](https://highmarkacaformulary.com) to view our Formulary and see if your drug is covered, and at which tier.

<sup>6</sup> See pages 50-52 for adult dental and vision benefit details.

<b>Income Level</b>			
<b>138-149% FPL</b>		<b>150-199% FPL</b>	
<b>Coverage Level</b>			
<b>Extra Savings Silver</b> <b>94%</b> of costs covered by your plan <b>6%</b> out-of-pocket costs		<b>Extra Savings Silver</b> <b>87%</b> of costs covered by your plan <b>13%</b> out-of-pocket costs	
<b>Silver 0</b>		<b>Premier Silver 0</b>	
<b>Plan Availability</b>	my Direct Blue EPO Extra Savings Silver 0  my Blue Access PPO Extra Savings Silver 0	my Direct Blue EPO Premier Extra Savings Silver 0  my Blue Access PPO Premier Extra Savings Silver 0	my Direct Blue EPO Extra Savings Silver 0  my Blue Access PPO Extra Savings Silver 0
<b>In-Network Deductible</b>	Individual: \$0 Family: \$0	Individual: \$0 Family: \$0	Individual: \$0 Family: \$0
<b>In Network, Out-of-Pocket Maximum</b>	Individual: \$1,200 Family: \$2,400	Individual: \$1,200 Family: \$2,400	Individual: \$3,150 Family: \$6,300
<b>Primary Care Visit</b>	\$1 copay	\$0 copay	\$15 copay
<b>Specialist Visit</b>	\$1 copay	\$0 copay	\$15 copay
<b>Outpatient Mental Health and Substance Abuse Visits</b>	\$1 copay	\$0 copay	\$15 copay
<b>Speech, Physical, and Occupational Therapy and Chiropractic Care<sup>1</sup></b>	\$1 copay	\$0 copay	\$15 copay
<b>Diagnostic Test (Lab/X-ray)</b>	\$1 copay	\$0 copay	\$25 copay
<b>Urgent Care<sup>2</sup></b>	\$5 copay	\$5 copay	\$30 copay
<b>Emergency Services</b>	\$75 copay	\$75 copay	\$275 copay
<b>Hospital Inpatient (including facility and professional)<sup>3</sup></b>	\$175 copay	\$175 copay	\$450 copay
<b>Pharmacy Summary<sup>4</sup></b>	\$0/\$5/\$15/50%	\$0/\$5/\$15/50%	\$0/\$10/\$50/50%
<b>Includes Dental and Vision Option<sup>5</sup></b>	No	Yes	No



Income Level			
150–199% FPL		200–249% FPL	
Coverage Level			
Extra Savings Silver 87% of costs covered by your plan 13% out-of-pocket costs		Extra Savings Silver 73% of costs covered by your plan 27% out-of-pocket costs	
Premier Silver 0		Silver 5000	Premier Silver 2100
<b>Plan Availability</b>	my Direct Blue EPO Premier Extra Savings Silver 0 my Blue Access PPO Premier Extra Savings Silver 0	my Direct Blue EPO Extra Savings Silver 5000 my Blue Access PPO Extra Savings Silver 5000	my Direct Blue EPO Premier Extra Savings Silver 2100 my Blue Access PPO Premier Extra Savings Silver 2100
<b>In-Network Deductible</b>	Individual: \$0 Family: \$0	Individual: \$3,700 Family: \$7,400	Individual: \$2,100 Family: \$4,200
<b>In Network, Out-of-Pocket Maximum</b>	Individual: \$3,150 Family: \$6,300	Individual: \$7,550 Family: \$15,100	Individual: \$7,200 Family: \$14,400
<b>Primary Care Visit</b>	\$0 copay	\$55 copay	\$75 copay
<b>Specialist Visit</b>	\$0 copay	\$55 copay	\$75 copay
<b>Outpatient Mental Health and Substance Abuse Visits</b>	\$0 copay	\$55 copay	\$75 copay
<b>Speech, Physical, and Occupational Therapy and Chiropractic Care<sup>1</sup></b>	\$0 copay	\$55 copay	\$75 copay
<b>Diagnostic Test (Lab/X-ray)</b>	\$40 copay	\$65 copay	\$75 copay
<b>Urgent Care<sup>2</sup></b>	\$10 copay	\$100 copay	\$100 copay
<b>Emergency Services</b>	\$500 copay	\$750 after deductible	\$750 after deductible
<b>Hospital Inpatient (including facility and professional)<sup>3</sup></b>	\$450 copay	\$1,125 after deductible	\$510 after deductible
<b>Pharmacy Summary<sup>4</sup></b>	\$0/\$10/\$50/50%	\$0/\$30/\$150/50%	\$0/\$30/\$150/50%
<b>Includes Dental and Vision Option<sup>5</sup></b>	Yes	No	Yes

<sup>1</sup> Limit of 30 combined physical and occupational therapy visits per benefit period. Limit does not apply to therapy services for the treatment of mental health or substance abuse.

<sup>2</sup> The copayment, if any, does not apply to urgent care services prescribed for the treatment of mental health or substance abuse.

<sup>3</sup> For plans with hospital and professional in-patient copays, the copays include all hospital and professional charges. Please refer to the plan's contract for additional information.

<sup>4</sup> Visit [highmarkacaformulary.com](http://highmarkacaformulary.com) to view our Formulary and see if your drug is covered, and at which tier.

<sup>5</sup> See pages 50-52 for adult dental and vision benefit details.

**Bedford, Blair, Cameron,  
Centre,\* Clearfield, Elk,  
Fayette, Greene, Huntingdon,  
Indiana, Jefferson, Lawrence,  
McKean, Mercer, Potter,  
Somerset, and  
Venango counties**

If you're in Centre County, you must reside in one of the following ZIP codes to enroll in one of these plans: 16677, 16686, 16829, 16845, 16859, 16866, 16874.

Coverage Level				
	<b>Catastrophic 9450</b> 3 free PCP visits	<b>Bronze 8900</b>	<b>Bronze 7100 HSA —</b> Custom Drug Benefit	<b>Bronze 3800</b>
<b>Plan Availability</b>	my Blue Access Major Events PPO 9450 – 3 free PCP visits	my Blue Access PPO Bronze 8900	my Blue Access PPO Bronze 7100 HSA - Custom Drug Benefit	my Blue Access PPO Bronze 3800
<b>In-Network Deductible</b>	Individual: \$9,450 Family: \$18,900	Individual: \$8,900 Family: \$17,800	Individual: \$7,100 Family: \$14,200	Individual: \$3,800 Family: \$7,600
<b>In-Network, Out-of-Pocket Maximum</b>	Individual: \$9,450 Family: \$18,900	Individual: \$8,900 Family: \$17,800	Individual: \$7,100 Family: \$14,200	Individual: \$9,200 Family: \$18,400
<b>Primary Care Visit</b>	\$0 after deductible; First 3 visits \$0 (not subject to deductible)	\$0 after deductible	\$0 after deductible	\$65 copay
<b>Specialist Visit</b>	\$0 after deductible	\$0 after deductible	\$0 after deductible	\$65 copay
<b>Outpatient Mental Health and Substance Abuse Visits</b>	\$0 after deductible	\$0 after deductible	\$0 after deductible	\$65 copay
<b>Speech, Physical, and Occupational Therapy and Chiropractic Care<sup>1</sup></b>	\$0 after deductible	\$0 after deductible	\$0 after deductible	\$65 copay
<b>Diagnostic Test (Lab/X-ray)</b>	\$0 after deductible	\$0 after deductible	\$0 after deductible	Lab: \$65 copay X-ray: \$150 copay
<b>Urgent Care<sup>2</sup></b>	\$0 after deductible	\$0 after deductible	\$0 after deductible	\$100 copay
<b>Emergency Services</b>	\$0 after deductible	\$0 after deductible	\$0 after deductible	50% after deductible
<b>Hospital Inpatient (including facility and professional)<sup>3</sup></b>	\$0 after deductible	\$0 after deductible	\$0 after deductible	50% after deductible
<b>Pharmacy Summary<sup>4</sup></b>	\$0/\$0/\$0/\$0 after deductible	\$0/\$0/\$0/\$0 after deductible	Select Rx: \$0 <sup>5</sup> not subject to deductible All other Rx: \$0/\$0/\$0/\$0 after deductible	50%/50%/50%/50% after deductible
<b>Includes Dental and Vision Option<sup>6</sup></b>	No	No	No	Yes

\* If you're in Centre County, you must reside in one of the following ZIP codes to enroll in one of these plans: 16677, 16686, 16829, 16845, 16859, 16866, 16874.

<sup>1</sup> Limit of 30 combined physical and occupational therapy visits per benefit period. Limit does not apply to therapy services for the treatment of mental health or substance abuse.

<sup>2</sup> The copayment, if any, does not apply to urgent care services prescribed for the treatment of mental health or substance abuse.

<sup>3</sup> The hospital copay applies to admission. Additional copays may be due for imaging, testing, etc. Please refer to the plan's contract for additional information.

<sup>4</sup> Visit [highmarkacaformulary.com](http://highmarkacaformulary.com) to view our Formulary and see if your drug is covered, and at which tier.

<sup>5</sup> To see a full list of drugs that are covered at \$0 prior to reaching your deductible, visit [highmark.link/cdbwpa](http://highmark.link/cdbwpa).

<sup>6</sup> See pages 50-52 for adult dental and vision benefit details.

	Coverage Level		
	Silver 7000	Premier Silver 2900	Silver 3500*
<b>Plan Availability</b>	my Blue Access PPO Silver 7000	my Blue Access PPO Premier Silver 2900	my Blue Access PPO Silver 3500*
<b>In-Network Deductible</b>	Individual: \$7,000 Family: \$14,000	Individual: \$2,900 Family: \$5,800	Individual: \$3,500 Family: \$7,000
<b>In-Network, Out-of-Pocket Maximum</b>	Individual: \$9,450 Family: \$18,900	Individual: \$8,500 Family: \$17,000	Individual: \$9,350 Family: \$18,700
<b>Primary Care Visit</b>	\$55 copay	\$75 copay	\$45 copay
<b>Specialist Visit</b>	\$55 copay	\$75 copay	\$45 copay
<b>Outpatient Mental Health and Substance Abuse Visits</b>	\$55 copay	\$75 copay	\$45 copay
<b>Speech, Physical, and Occupational Therapy and Chiropractic Care<sup>2</sup></b>	\$55 copay	\$75 copay	\$45 copay
<b>Diagnostic Test (Lab/X-ray)</b>	\$75 copay	\$75 copay	\$75 copay
<b>Urgent Care<sup>3</sup></b>	\$100 copay	\$100 copay	\$90 copay
<b>Emergency Services</b>	\$750 after deductible	\$750 after deductible	30% after deductible
<b>Hospital Inpatient (including facility and professional)<sup>4</sup></b>	\$1,125 after deductible	\$510 after deductible	30% after deductible
<b>Pharmacy Summary<sup>5</sup></b>	\$0/\$30/\$150/50%	\$0/\$30/\$150/50%	\$0/\$30/\$150/50%
<b>Includes Dental and Vision Option<sup>6</sup></b>	No	Yes	Yes

	Coverage Level			
	Gold 1700 HSA <sup>1</sup>	Gold 1500	Gold 0	Premier Gold 0
<b>Plan Availability</b>	my Blue Access PPO Gold 1700 HSA <sup>1</sup>	my Blue Access PPO Gold 1500	my Blue Access PPO Gold 0	my Blue Access PPO Premier Gold 0
<b>In-Network Deductible</b>	Individual: \$1,700 Family: \$3,400	Individual: \$1,500 Family: \$3,000	Individual: \$0 Family: \$0	Individual: \$0 Family: \$0
<b>In-Network, Out-of-Pocket Maximum</b>	Individual: \$5,700 Family: \$11,400	Individual: \$8,300 Family: \$16,600	Individual: \$7,500 Family: \$15,000	Individual: \$6,550 Family: \$13,100
<b>Primary Care Visit</b>	\$20 after deductible	\$35 copay	\$20 copay	\$15 copay
<b>Specialist Visit</b>	\$20 after deductible	\$35 copay	\$20 copay	\$15 copay
<b>Outpatient Mental Health and Substance Abuse Visits</b>	\$20 after deductible	\$35 copay	\$20 copay	\$15 copay
<b>Speech, Physical, and Occupational Therapy and Chiropractic Care<sup>2</sup></b>	\$20 after deductible	\$35 copay	\$20 copay	\$40 copay
<b>Diagnostic Test (Lab/X-ray)</b>	\$20 after deductible	\$40 copay	\$35 copay	\$45 copay
<b>Urgent Care<sup>3</sup></b>	\$40 after deductible	\$70 copay	\$40 copay	\$30 copay
<b>Emergency Services</b>	\$175 after deductible	\$350 copay	\$300 copay	\$280 copay
<b>Hospital Inpatient (including facility and professional)<sup>4</sup></b>	\$450 after deductible	\$725 copay after deductible	\$725 copay	\$525 copay
<b>Pharmacy Summary<sup>5</sup></b>	\$0/\$30/\$150/50% after deductible	\$0/\$30/\$150/50%	\$0/\$30/\$150/50%	\$0/\$25/\$75/50%
<b>Includes Dental and Vision Option<sup>6</sup></b>	No	No	Yes	Yes

\* These plans are available directly from Highmark and are not available on **Pennie.com**. They do not qualify for advance premium tax credits or cost-sharing reductions.

\*\* If you're in Centre County, you must reside in one of the following ZIP codes to enroll in one of these plans: 16677, 16686, 16829, 16845, 16859, 16866, 16874.

<sup>1</sup> This Plan has a Non-Embedded deductible. See Disclosures page for more information.

<sup>2</sup> Limit of 30 combined physical and occupational therapy visits per benefit period. Limit does not apply to therapy services for the treatment of mental health or substance abuse.

<sup>3</sup> The copayment, if any, does not apply to urgent care services prescribed for the treatment of mental health or substance abuse.

<sup>4</sup> For plans with hospital and professional in-patient copays, the copays include all hospital and professional charges. Please refer to the plan's contract for additional information.

<sup>5</sup> Visit **highmarkacaformulary.com** to view our Formulary and see if your drug is covered, and at which tier.

<sup>6</sup> See pages 50-52 for adult dental and vision benefit details.

Income Level		
138-149% FPL		150-199% FPL
Coverage Level		
<b>Extra Savings Silver</b> <b>94%</b> of costs covered by your plan <b>6%</b> out-of-pocket costs		<b>Extra Savings Silver</b> <b>87%</b> of costs covered by your plan <b>13%</b> out-of-pocket costs
<b>Silver 0</b>	<b>Premier Silver 0</b>	<b>Silver 0</b>

Plan Availability	my Blue Access PPO Extra Savings Silver 0	my Blue Access PPO Premier Extra Savings Silver 0	my Blue Access PPO Extra Savings Silver 0
<b>In-Network Deductible</b>	Individual: \$0 Family: \$0	Individual: \$0 Family: \$0	Individual: \$0 Family: \$0
<b>In-Network, Out-of-Pocket Maximum</b>	Individual: \$1,200 Family: \$2,400	Individual: \$1,200 Family: \$2,400	Individual: \$3,150 Family: \$6,300
<b>Primary Care Visit</b>	\$1 copay	\$0 copay	\$15 copay
<b>Specialist Visit</b>	\$1 copay	\$0 copay	\$15 copay
<b>Outpatient Mental Health and Substance Abuse Visits</b>	\$1 copay	\$0 copay	\$15 copay
<b>Speech, Physical, and Occupational Therapy and Chiropractic Care<sup>1</sup></b>	\$1 copay	\$0 copay	\$15 copay
<b>Diagnostic Test (Lab/X-ray)</b>	\$1 copay	\$0 copay	\$25 copay
<b>Urgent Care<sup>2</sup></b>	\$5 copay	\$5 copay	\$30 copay
<b>Emergency Services</b>	\$75 copay	\$75 copay	\$275 copay
<b>Hospital Inpatient (including facility and professional)<sup>3</sup></b>	\$175 copay	\$175 copay	\$450 copay
<b>Pharmacy Summary<sup>4</sup></b>	\$0/\$5/\$15/50%	\$0/\$5/\$15/50%	\$0/\$10/\$50/50%
<b>Includes Dental and Vision Option<sup>5</sup></b>	No	Yes	No



	Income Level		
	150-199% FPL	200-249% FPL	
	Coverage Level		
	<b>Extra Savings Silver</b> <b>87%</b> of costs covered by your plan <b>13%</b> out-of-pocket costs	<b>Extra Savings Silver</b> <b>73%</b> of costs covered by your plan <b>27%</b> out-of-pocket costs	
	Premier Silver 0	Silver 5000	Premier Silver 2100
Plan Availability	my Blue Access PPO Premier Extra Savings Silver 0	my Blue Access PPO Extra Savings Silver 5000	my Blue Access PPO Premier Extra Savings Silver 2100
In-Network Deductible	Individual: \$0 Family: \$0	Individual: \$3,700 Family: \$7,400	Individual: \$2,100 Family: \$4,200
In-Network, Out-of-Pocket Maximum	Individual: \$3,150 Family: \$6,300	Individual: \$7,550 Family: \$15,100	Individual: \$7,200 Family: \$14,400
Primary Care Visit	\$0 copay	\$55 copay	\$75 copay
Specialist Visit	\$0 copay	\$55 copay	\$75 copay
Outpatient Mental Health and Substance Abuse Visits	\$0 copay	\$55 copay	\$75 copay
Speech, Physical, and Occupational Therapy and Chiropractic Care <sup>1</sup>	\$0 copay	\$55 copay	\$75 copay
Diagnostic Test (Lab/X-ray)	\$40 copay	\$65 copay	\$75 copay
Urgent Care <sup>2</sup>	\$10 copay	\$100 copay	\$100 copay
Emergency Services	\$500 copay	\$750 after deductible	\$750 after deductible
Hospital Inpatient (including facility and professional) <sup>3</sup>	\$450 copay	\$1,125 after deductible	\$510 after deductible
Pharmacy Summary <sup>4</sup>	\$0/\$10/\$50/50%	\$0/\$30/\$150/50%	\$0/\$30/\$150/50%
Includes Dental and Vision Option <sup>5</sup>	Yes	No	Yes

\* If you're in Centre County, you must reside in one of the following ZIP codes to enroll in one of these plans: 16677, 16686, 16829, 16845, 16859, 16866, 16874.

<sup>1</sup> Limit of 30 combined physical and occupational therapy visits per benefit period. Limit does not apply to therapy services for the treatment of mental health or substance abuse.

<sup>2</sup> For plans with hospital and professional in-patient copays, the copays include all hospital and professional charges. Please refer to the plan's contract for additional information.

<sup>3</sup> The copayment, if any, does not apply to urgent care services prescribed for the treatment of mental health or substance abuse.

<sup>4</sup> Visit [highmarkacaformulary.com](https://highmarkacaformulary.com) to view our Formulary and see if your drug is covered, and at which tier.

<sup>5</sup> See pages 50-52 for adult dental and vision benefit details.

# **Vision and dental benefits**

---

# Plans that include adult vision and dental



Highmark is making vision and dental care more accessible. At every metal level, we offer plans with the option to have adult dental and vision included. Pediatric dental and vision benefits are automatically included with every plan.

You can find adult dental and vision benefits on pages 50–52 and pediatric dental and vision benefits on pages 53–57.

## Vision coverage

Getting your eyes checked can help identify issues like diabetes early on when they're easier to treat. Our adult vision covers a free annual eye exam.

## Dental coverage

Seeing a dentist is the best way to take care of your oral health. Our adult dental includes 100% coverage on cleanings,\* X-rays, and sealants.

## It pays to have dental coverage

Service	Average cost with dental coverage	Average cost without dental coverage (usual fee)
Exams, cleanings, and X-rays	\$0-37	Up to \$400 <sup>1</sup>
Composite filling	\$71	\$170 <sup>2</sup>
Simple extraction	\$33	\$163 <sup>3</sup>
Root canal	\$400	\$1,250 <sup>4</sup>

\* Two cleanings per year.

<sup>1</sup> [https://www.dentaly.org/us/oral-hygiene/teeth-cleaning/#How\\_much\\_does\\_a\\_dental\\_cleaning\\_cost](https://www.dentaly.org/us/oral-hygiene/teeth-cleaning/#How_much_does_a_dental_cleaning_cost), last accessed April 25, 2023; <https://www.dentaly.org/us/panoramic-dental-xray/>, last accessed April 25, 2023

<sup>2</sup> [https://www.dentaly.org/us/tooth-filling/#How\\_much\\_do\\_fillings\\_cost](https://www.dentaly.org/us/tooth-filling/#How_much_do_fillings_cost), last accessed April 25, 2023

<sup>3</sup> [https://www.dentaly.org/us/tooth-extraction/#How\\_much\\_does\\_tooth\\_removal\\_cost\\_in\\_the\\_US](https://www.dentaly.org/us/tooth-extraction/#How_much_does_tooth_removal_cost_in_the_US), last accessed April 25, 2023

<sup>4</sup> <https://www.webmd.com/oral-health/guide/dental-root-canals>, last accessed April 25, 2023

# For all plans with adult dental and vision coverage – these are your vision benefits.

## In-network

Vision benefits	Frequency - once every:
Eye examination (including dilation when professionally indicated)	12 months
Spectacle lenses	12 months
Frame	12 months
Contact lenses (in lieu of eyeglass lenses)	12 months

Copayments	
Eye examination	\$0
Spectacle lenses	\$0
Contact lens evaluation, fitting, and follow-up care	If a member chooses collection lenses, no copayment is required. If non-collection lenses are chosen, the member must pay all associated costs.

Eyeglass benefit - spectacle lenses	Average retail value	Member charges
Clear plastic single-vision, lined bifocal, trifocal, or lenticular lenses (any Rx)	\$60-\$120	Included
Oversize lenses	\$20	Included
Tinting of plastic lenses	\$20	\$11
Scratch-resistant coating	\$25-\$40	Included
Scratch protection plan single vision	\$60-\$120	\$20
Scratch protection plan multifocal	\$60-\$120	\$40
Polycarbonate lenses <sup>1</sup>	\$60-\$75	\$0 or \$30
Ultraviolet coating	\$25-\$30	\$12
Standard anti-reflective (AR) coating	\$50-\$70	\$35
Blue light filtering	\$25	\$15
Premium AR coating	\$65-\$90	\$48
Ultra AR coating	\$100-\$125	\$60
Standard progressive lenses	\$150-\$195	\$50
Premium progressives (varilux®, etc.)	\$195-\$225	\$90
Ultra progressive lenses	\$225-\$300	\$140
Intermediate-vision lenses	\$150-\$175	\$30
High-index lenses	\$90-\$150	\$55
Polarized lenses	\$95-\$110	\$75
Plastic photosensitive lenses	\$95-\$150	\$65

Eyeglass benefit - frame		Average retail value	
<b>Non-collection frame allowance (retail):</b>		Up to \$130	Up to \$150
<b>Davis Vision Frame Collection<sup>2</sup> (in lieu of allowance):</b>	Fashion level	Up to \$125	Included
	Designer level	Up to \$175	Included
	Premier level	Up to \$225	Included

Contact lens benefit (in lieu of eyeglasses)		
<b>Non-collection contact lenses: materials allowance</b>		Up to \$150
<b>Collection contact lenses<sup>2</sup> (in lieu of allowance): materials</b>	Disposable	Covered in full
	Planned replacement	Covered in full
	Evaluation, fitting, and follow-up care	Included
<b>Medically necessary contact lenses (with prior approval)</b>	Materials, evaluation, fitting, and follow-up care	Included

<sup>1</sup> Polycarbonate lenses are covered in full for dependent children, monocular patients and patients with prescriptions +/- 6.00 diopters or greater.

<sup>2</sup> Collection is available at most participating independent provider offices. Collection is subject to change. Collection is inclusive of select torics and multifocals.

### One-year eyeglass breakage warranty included.

Adult vision benefits utilize the Davis Vision Network. There is no out-of-network coverage. Davis Vision is a separate company that administers Highmark vision benefits.

To find a provider in the Davis Vision Network, visit [highmark.com](http://highmark.com), scroll down to **Find a Doc or Rx**, select **Just Browsing**, enter your ZIP code and click **Continue**, then scroll down and click **Vision Care**.

# For all plans with adult dental and vision coverage — these are your dental benefits.

Dental Benefits			
Annual deductible per insured person		\$50 per calendar year	
Annual deductible per insured family		\$150 per calendar year	
Annual maximum per insured person		\$1,250	
Covered services:	Policy pays		Elimination period
	In network	Out of network	
Oral Evaluations (exams)	100%	0%	None
Radiographs (all X-rays)	100%	0%	None
Prophylaxis (cleanings)	100%	0%	None
Palliative treatment (emergency)	100%	0%	None
Sealants	100%	0%	None
Space maintainers	100%	0%	None
Repairs of crowns, inlays, onlays, fixed partial dentures, and dentures	80%	0%	6 months
Basic restorative (fillings, etc.)	80%	0%	None
Simple extractions	80%	0%	6 months
Surgical extractions	50%	0%	6 months
Complex oral surgery	50%	0%	6 months
Endodontics (root canals, etc.)	50%	0%	6 months
General anesthesia and/or nitrous oxide and/or IV sedation	80%	0%	6 months
Nonsurgical periodontics	50%	0%	6 months
Periodontal maintenance	50%	0%	None
Surgical periodontics	50%	0%	6 months
Crowns, inlays, onlays	50%	0%	6 months
Prosthetics (fixed partial dentures, dentures)	50%	0%	6 months
Adjustments and repairs of prosthetics	80%	0%	None
Implant services	0%	0%	None
Consultations	100%	0%	None
Orthodontics	0%	0%	None

The percentage in the Policy Pays column is the percentage of the set amount that the Policy will pay for covered services provided by a participating dentist. Participating dentists accept the plan allowance as payment in full.

Adult dental benefits utilize the Concordia Advantage Network. Members must use a United Concordia provider. There is no out-of-network coverage for this benefit.

Our dental plan uses the Concordia Advantage network. To find in-network dentists, visit [highmark.com](http://highmark.com), scroll down to **Find a Doc or Rx**, select **Just Browsing**, enter your ZIP code and click **Continue**, then scroll down and click **Dental Care**.



# All plans have pediatric vision coverage — these are your vision benefits.

## In-network

Network benefit (Independents and Visionworks) <sup>1</sup>	Frequency - once every:	Members under 19 years of age <sup>2</sup>
Eye examination including dilation (when professionally indicated)*	12 months	\$0 copay
Spectacle lenses <sup>3**</sup>	12 months	\$0 copay
Frame <sup>**</sup>	12 months	\$0 copay
Contact lens evaluation, fitting, and follow-up care (in lieu of eyeglasses)	12 months	\$0 copay
Contact lenses (in lieu of eyeglass) <sup>**</sup>	12 months	\$0 copay

Eyeglass benefit - spectacle lenses	Member charges
Clear plastic single-vision, lined bifocal, trifocal, or lenticular lenses (any size or Rx)	\$0
Digital single vision (intermediate)	\$30
Tinting of plastic lenses (solid/gradient)	\$11
Scratch-resistant coating	\$0
Polycarbonate lenses	\$0
Ultraviolet coating	\$12
Blue-light filtering	\$15
Anti-reflective (AR) coating (standard/premium/ultra/ultimate)	\$35/\$48/\$60/\$85
Progressive lenses <sup>4</sup> (standard/premium/ultra/ultimate)	\$50/\$90/\$140/\$175
High-index lenses (thinner and lighter)	\$55/\$120
Polarized lenses	\$75
Plastic photochromatic lenses	\$65
Scratch protection plan: single vision/multifocal lenses	\$20/\$40
Intermediate-vision lenses	\$30
Plastic photosensitive lenses	\$65

<b>Eyeglass benefit - frame<sup>5</sup></b>	<b>Member charges</b>
<b>Davis Vision exclusive collection (in lieu of allowance)</b>	
<b>Fashion/Designer/Premier - member charge (if applicable)</b>	\$0/\$0/\$0
<b>Non-collection frame allowance (retail)</b>	Up to \$150, plus a 20% discount on any overage

<b>Contact lens benefit (in lieu of eyeglasses)</b>	
<b>Contact lenses: Materials allowance</b>	Up to \$150, plus a 20% discount on any overage
<b>Evaluation, fitting, and follow-up care - standard and specialty lens types</b>	Not covered
<b>Evaluation, fitting, and follow-up care - standard lens types</b>	Not covered
<b>Exclusive collection contact lenses<sup>6</sup> (in lieu of allowance)</b>	
<b>Materials: disposable or planned replacement</b>	Up to 4 or 2 boxes
<b>Evaluation, fitting, and follow-up care</b>	\$0
<b>Visually required contact lenses (with prior approval) - materials, evaluation, fitting, and follow-up care</b>	\$0 with prior approval

<sup>1</sup> Vision benefits utilize the Davis Vision Network. There is no out-of-network coverage. Davis Vision is a separate company that administers Highmark vision benefits. Visionworks, also a separate company, is a provider within the Davis Vision Network.

<sup>2</sup> Dependents will be terminated from vision coverage at the end of the month in which they turn 19.

<sup>3</sup> Includes glass, plastic, or oversized lenses.

<sup>4</sup> Progressive multifocals can be worn by most people. Conventional bifocals will be supplied at no additional charge for anyone who is unable to adapt to progressive lenses. However, the member's payment toward the progressive upgrade will not be refunded.

<sup>5</sup> Collection frames will be covered at 100%. If a non-collection frame is selected, a \$150 allowance will be applied. For any amount over \$150 on a non-collection frame, the member will be responsible for 20% of the cost of the overage.

<sup>6</sup> Disposable contact lens wearers will receive four multipacks of lenses. Planned replacement lens wearers will receive two multipacks of lenses.

\* Subject to deductible on Major Events/Catastrophic plans.

\*\* Subject to deductible on high-deductible plans (that include an HSA) and Major Events/Catastrophic plans.

# All plans have pediatric dental coverage — these are your dental benefits.

These plans will pay benefits for Covered Services shown below subject to exclusions and other Policy terms.

Payment is based on the plan allowance for the specific Covered Service.

There is no waiting period on covered services.

Dental benefits	All plans except high-deductible health plans that include an HSA and Major Events/ Catastrophic health plans	High-deductible health plans that include an HSA	Major Events/ Catastrophic health plans
Contract year deductible per member	\$0	Expenditures for medical, dental, and vision care all contribute to the member's deductible.	Expenditures for medical, dental, and vision care all contribute to the member's deductible.
Annual maximum per member	Unlimited	Unlimited	Unlimited
Out-of-pocket year maximum per member	Expenditures for medical, dental, and vision care all contribute to the member's out-of-pocket maximum.	Expenditures for medical, dental, and vision care all contribute to the member's out-of-pocket maximum.	Expenditures for medical, dental, and vision care all contribute to the member's out-of-pocket maximum.
Network	Advantage	Advantage	Advantage
Covered services	Policy pays at participating dentists		
Oral evaluations (exams)	100%	100%	Coinsurance matches medical coinsurance (after deductible)
Radiographs (all X-rays)	100%	100%	
Prophylaxis (cleanings)	100%	100%	
Fluoride treatments	100%	100%	
Sealants	100%	100%	
Space maintainers	100%	100%	
Crowns, crown repair, inlays, and onlays	50%	Coinsurance matches medical coinsurance (after deductible)	
Basic restorative (anterior composite, anterior amalgam, and posterior amalgam)	50%	Coinsurance matches medical coinsurance (after deductible)	
Simple extractions	50%	Coinsurance matches medical coinsurance (after deductible)	
Surgical extractions	50%	Coinsurance matches medical coinsurance (after deductible)	
Oral surgery	50%	Coinsurance matches medical coinsurance (after deductible)	
Apicoectomy/ periradicular surgery	50%	Coinsurance matches medical coinsurance (after deductible)	

Dental benefits	All plans except high-deductible health plans that include an HSA and Major Events/ Catastrophic health plans	High-deductible health plans that include an HSA	Major Events/ Catastrophic health plans
Network	Advantage	Advantage	Advantage
Consultations	100%	Coinsurance matches medical coinsurance (after deductible)	
General anesthesia, nitrous oxide and/or IV sedation	50%	Coinsurance matches medical coinsurance (after deductible)	
Palliative treatment (emergency)	100%	Coinsurance matches medical coinsurance (after deductible)	
Endodontics (root canals, etc.)	50%	Coinsurance matches medical coinsurance (after deductible)	
Surgical periodontics	50%	Coinsurance matches medical coinsurance (after deductible)	
Non-surgical periodontics	50%	Coinsurance matches medical coinsurance (after deductible)	
Periodontal maintenance	50%	Coinsurance matches medical coinsurance (after deductible)	
Prosthodontics (fixed partial dentures)	50%	Coinsurance matches medical coinsurance (after deductible)	
Prosthetics (complete dentures, adjustments, and repairs)	50%	Coinsurance matches medical coinsurance (after deductible)	
Implant services	50%	Coinsurance matches medical coinsurance (after deductible)	
Maxillofacial prosthetics	Not covered		
Medically necessary orthodontics	50%	Coinsurance matches medical coinsurance (after deductible)	
Cosmetic orthodontic services	Not covered		

These plans meet the minimum essential health benefit requirements for pediatric oral health as required under the federal Affordable Care Act. These benefits are only available for children through the end of the benefit period that they turn 19 years old.

Participating dentists accept contracted plan allowance as payment in full for services. **There is no coverage for services provided by out-of-network providers.**

Our dental plan uses the Concordia Advantage network. To find in-network dentists, visit [highmark.com](http://highmark.com), scroll down to **Find a Doc or Rx**, select **Just Browsing**, enter your ZIP code and click **Continue**, then scroll down and click **Dental Care**.

# Pediatric dental benefits (continued)

## Medically necessary orthodontics coverage

In this section, “Medically Necessary” or “Medical Necessity” shall mean health care services that a physician or Dentist, exercising prudent clinical judgment, would provide to a patient for the purpose of evaluating, diagnosing or treating an illness, injury, disease or its symptoms, and that are:

1. In accordance with the generally accepted standards of medical/dental practice;
2. Clinically appropriate, in terms of type, frequency, extent, site and duration, and considered effective for the patient’s illness, injury or disease; and
3. Not primarily for the convenience of the patient or physician/Dentist, and not more costly than an alternative service or sequence of services at least as likely to produce equivalent therapeutic or diagnostic results as to the diagnosis or treatment of that patient’s illness, injury or disease.

As used subpart 1, above, “generally accepted standards of medical/dental practice” means:

- Standards that are based on credible scientific evidence published in peer-reviewed, medical/dental literature generally recognized by the relevant professional community;
- Recognized Medical/Dental and Specialty Society recommendations;
- The views of physicians/Dentists practicing in the relevant clinical area; and
- Any other relevant factors.

A Medically Necessary orthodontic service is an orthodontic procedure that occurs as part of an approved orthodontic plan that is intended to treat severe functional difficulties, developmental anomalies of facial bones and/or oral structures, facial trauma resulting in functional difficulties or documentation of a psychological/psychiatric diagnosis from a mental health provider that orthodontic treatment will improve the mental/psychological condition of the child.

## Coverage of medically necessary orthodontics

1. Orthodontic treatment must be Medically Necessary and be the only method capable of:
  - a) Preventing irreversible damage to the insured person’s teeth or their supporting structures and,
  - b) Restoring the insured person’s oral structure to health and function.
2. The insured person must have a fully erupted set of permanent teeth to be eligible for comprehensive, Medically Necessary orthodontic services for handicapping malocclusions of the adult dentition.
3. Other orthodontic Covered Services include: pre-orthodontic treatment visit for completion of HLD (NJ-Mod2) form, diagnostic photographs and panoramic radiographs; limited treatment for the primary, transitional and adult dentition; interceptive treatment for the primary transitional dentition; minor treatment to control harmful habits; continuation of transfer cases or cases started prior to the insured person’s Effective Date; orthognathic surgical cases with comprehensive orthodontic treatment; placement and removal of orthodontic appliances; repairs to orthodontic appliances; replacement of lost or broken retainer; rebonding or recementing of brackets and/or bands; and removal of appliances by a provider that did not start the case when requested by report.
4. All Medically Necessary orthodontic services require prior approval and a written plan of care.

---

# Health care lingo, translated.

When you're choosing plans, you're bound to see certain terms over and over. Here's a cheat sheet for a few of the most important ones.

## **BLUECARD**

A program that connects independent Blue Plans across the country. It gives Blue Plan members access to in-network coverage while outside their plan area. The level of coverage depends on your chosen plan.

## **COINSURANCE**

The percentage of total cost of care you may owe for certain covered services after reaching your deductible. For example, if your plan pays 80%, you pay 20%.

## **COPAY**

The set amount you pay for certain covered services. For example, it could be \$20 for a doctor visit or \$30 for a specialist visit. If you owe a copay, you must pay it when you check in for your visit.

## **DEDUCTIBLE**

The set amount you pay for covered health services or drug costs before your plan starts paying.

## **EMERGENCY SERVICES**

Care for a condition that you think needs immediate attention to avoid severe harm.

## **FORMULARY**

A list of drugs selected by the plan based on certain clinical factors. The list of medicines is sorted by tier. Lower tiers usually mean lower copays.

## **HABILITATIVE SERVICES**

Health care services that help you keep, acquire, or improve skills and functioning for daily living following disease, illness, or injury.

## **HEALTH SAVINGS ACCOUNT (HSA)**

An account to set aside pre-tax money to pay for qualified medical expenses. You can only have an HSA if you have a qualified high-deductible health plan.

## **HIGH-DEDUCTIBLE HEALTH PLAN (HDHP)**

A plan that usually comes with a lower premium because you pay more for health care services upfront before the insurance company starts to pay. These plans are often combined with a health savings account.

## **IN-NETWORK PROVIDER**

A doctor or hospital that has an agreement with the plan and will accept plan allowance plus member copay or coinsurance as payment in full.

## **OUT-OF-NETWORK PROVIDER**

A doctor or hospital that does not have an agreement with the plan and does not have to accept plan allowance as payment in full.

## **OUT-OF-POCKET MAXIMUM**

The most you'd pay for covered care in a benefit period or year. If you reach this amount, your plan pays 100% after that.

## **PLAN ALLOWANCE**

The set amount an in-network provider has agreed to accept for a covered health care service. Member responsibility for the service can be found in the Outline of Coverage. The plan pays the difference between the plan allowance and the member responsibility. If an out-of-network provider bills for more than the plan allowance, you may have to pay the difference. If your plan does not include out-of-network coverage and you receive care, other than emergency or urgent care, you may be responsible for the entire cost.

## **PREMIUM**

The monthly amount paid for coverage.

## **PREVENTIVE CARE SERVICES**

Routine care like screenings and checkups that help keep you healthy. Refer to the Highmark Preventive Schedule for the list of preventive care services.

## **PRIMARY CARE PROVIDER (PCP)**

The medical professional you see for most of your basic care, like yearly preventive visits and screenings.

## **QUALIFIED HEALTH PLAN (QHP)**

A plan that has been certified by the Health Insurance Marketplace and meets all ACA requirements. That includes providing the 10 Essential Health Benefits and staying inside the limits for deductibles, copays, and out-of-pocket maximums.

## **REHABILITATIVE SERVICES**

Care that helps you keep, get back, or improve skills and functioning after you were sick, hurt, or disabled.

## **RETAIL CLINIC**

Walk-in centers for less complex health needs, generally open in the evenings and on weekends.

## **URGENT CARE CENTER**

A walk-in center for when you have a condition that's serious enough to need care right away, but not serious enough for a trip to the emergency room.

## **VIRTUAL VISIT**

A real-time office visit with a doctor at a remote location, conducted via interactive audio and streaming video telecommunications.



# In-network facilities

Facilities	Together Blue EPO <sup>1</sup>	my Direct Blue EPO	my Blue Access PPO
<b>Adams County</b>			
WellSpan Gettysburg Hospital	Not available	Available	Available
<b>Allegheny County</b>			
AHN Allegheny General Hospital	Available	Available	Available
AHN Allegheny Valley Hospital	Available	Available	Available
AHN Brentwood Neighborhood Hospital	Available	Available	Available
AHN Forbes Hospital	Available	Available	Available
AHN Harmar Neighborhood Hospital	Available	Available	Available
AHN Jefferson Hospital	Available	Available	Available
AHN McCandless Neighborhood Hospital	Available	Available	Available
AHN West Penn Hospital	Available	Available	Available
AHN Wexford Hospital	Available	Available	Available
Heritage Valley Kennedy	Not available	Available	Available
Heritage Valley Sewickley	Not available	Available	Available
St. Clair Hospital	Not available	Available	Available
UPMC Children's Hospital of Pittsburgh	Available	Available	Available
UPMC East	Not available	Not available	Available
UPMC Magee-Womens Hospital	Not available	Not available	Available
UPMC McKeesport	Not available	Not available	Available
UPMC Mercy	Not available	Not available	Available
UPMC Passavant - McCandless	Not available	Not available	Available
UPMC Presbyterian	Not available	Not available	Available
UPMC Shadyside	Not available	Not available	Available
UPMC St. Margaret	Not available	Not available	Available
UPMC Western Psychiatric Hospital	Available	Available	Available

Facilities	Together Blue EPO <sup>1</sup>	my Direct Blue EPO	my Blue Access PPO
<b>Armstrong County</b>			
Armstrong County Memorial Hospital	Not available	Available	Available
<b>Beaver County</b>			
Heritage Valley Beaver	Not available	Available	Available
<b>Bedford County</b>			
UPMC Bedford	Available	Available	Available
<b>Berks County</b>			
Penn State Health St. Joseph Medical Center	Not available	Available	Available
Surgical Institute of Reading	Not available	Available	Available
Tower Health - Reading Hospital	Not available	Not available	Available
<b>Blair County</b>			
Conemaugh Nason Medical Center	Not available	Available	Available
Penn Highlands Tyrone	Not available	Available	Available
UPMC Altoona	Available	Available	Available
<b>Bradford County</b>			
Guthrie Robert Packer Hospital	Not available	Available	Available
Guthrie Robert Packer Hospital - Towanda Campus	Not available	Available	Available
Guthrie Troy Community Hospital	Not available	Available	Available
<b>Bucks County*</b>			
Doylestown Hospital	Not available	Available	Available
Grand View Hospital	Not available	Available	Available
Jefferson Health - Bucks Hospital	Not available	Available	Available
Prime Healthcare - Lower Bucks Hospital	Not available	Available	Available
St. Luke's Hospital - Upper Bucks Campus	Not available	Not available	Available

<sup>1</sup> Together Blue EPO and Together Blue Virtual Choice EPO plans utilize the same network.

**\* We are always working to grow our network. Please visit the Provider Directory at [highmark.com](https://highmark.com) to confirm in-network status for facilities not listed here for 2024.**

Take a look at our provider directory to check if there are additional hospitals in your network. You can find the provider directory at [highmark.com](https://highmark.com). Scroll down to **Find a Doc or Rx**, select **Just Browsing**, enter your ZIP code and click **Continue**, then scroll down and click **Medical Care**.

## In-network facilities (continued)

Facilities	Together Blue EPO <sup>1</sup>	my Direct Blue EPO	my Blue Access PPO
<b>Butler County</b>			
BHS Butler Memorial Hospital	Not available	Available	Available
UPMC Passavant - Cranberry	Not available	Not available	Available
<b>Cambria County</b>			
Conemaugh Memorial Medical Center	Not available	Available	Available
Conemaugh Memorial Medical Center - Lee Campus	Not available	Available	Available
Conemaugh Miners Medical Center	Not available	Available	Available
<b>Carbon County</b>			
Lehigh Valley Hospital - Carbon	Not available	Available	Available
St. Luke's Hospital - Carbon Campus	Not available	Available	Available
St. Luke's Hospital - Lehighon Campus	Not available	Available	Available
<b>Centre County</b>			
Mount Nittany Medical Center	Not available	Available	Available
<b>Chester County*</b>			
Main Line Health - Bryn Mawr Rehab Hospital	Not available	Available	Available
Main Line Health - Paoli County Hospital	Not available	Available	Available
Penn Medicine - Chester County Hospital	Not available	Available	Available
<b>Clarion County</b>			
BHS Clarion Hospital	Not available	Available	Available
<b>Clearfield County</b>			
Penn Highlands Clearfield	Not available	Not available	Available
Penn Highlands DuBois	Not available	Not available	Available
<b>Clinton County</b>			
Bucktail Medical Center	Not available	Available	Available
<b>Columbia County</b>			
Geisinger Bloomsburg Hospital	Not available	Not available	Available
<b>Crawford County</b>			
Meadville Medical Center	Not available	Available	Available
Titusville Area Hospital	Not available	Available	Available

Facilities	Together Blue EPO <sup>1</sup>	my Direct Blue EPO	my Blue Access PPO
<b>Cumberland County</b>			
Penn State Health Hampden Medical Center	Not available	Available	Available
Penn State Health Holy Spirit Medical Center	Not available	Available	Available
UPMC Carlisle	Not available	Available	Available
UPMC Pinnacle Hospital	Not available	Not available	Available
<b>Dauphin County</b>			
Penn State Health Children's Hospital	Not available	Available	Available
Penn State Health Milton S. Hershey Medical Center	Not available	Available	Available
UPMC Community Osteopathic	Not available	Not available	Available
UPMC Harrisburg	Not available	Not available	Available
<b>Delaware County*</b>			
Crozer Health - Chester Medical Center	Not available	Available	Available
Crozer Health - Delaware County Memorial Hospital	Not available	Available	Available
Crozer Health - Springfield Hospital	Not available	Available	Available
Crozer Health - Taylor Hospital	Not available	Available	Available
Main Line Health - Riddle Hospital	Not available	Available	Available
<b>Elk County</b>			
Penn Highlands Elk	Not available	Not available	Available
<b>Erie County</b>			
AHN Saint Vincent Hospital	Available	Available	Available
LECOM Health - Corry Memorial Hospital	Not available	Available	Available
LECOM Health - Millcreek Community Hospital	Not available	Available	Available
UPMC Hamot	Not available	Not available	Available
<b>Fayette County</b>			
Penn Highlands Connellsville	Not available	Available	Available
WVU Medicine - Uniontown Hospital	Not available	Available	Available

<sup>1</sup> Together Blue EPO and Together Blue Virtual Choice EPO plans utilize the same network.

**\* We are always working to grow our network. Please visit the Provider Directory at [highmark.com](https://highmark.com) to confirm in-network status for facilities not listed here for 2024.**

Take a look at our provider directory to check if there are additional hospitals in your network. You can find the provider directory at [highmark.com](https://highmark.com). Scroll down to **Find a Doc or Rx**, select **Just Browsing**, enter your ZIP code and click **Continue**, then scroll down and click **Medical Care**.

## In-network facilities (continued)

Facilities	Together Blue EPO <sup>1</sup>	my Direct Blue EPO	my Blue Access PPO
<b>Franklin County</b>			
WellSpan Chambersburg Hospital	Not available	Available	Available
WellSpan Waynesboro Hospital	Not available	Available	Available
<b>Fulton County</b>			
Fulton County Medical Center	Not available	Not available	Available
<b>Greene County</b>			
Washington Health System Greene	Not available	Available	Available
<b>Huntingdon County</b>			
Penn Highlands Huntingdon	Not available	Not available	Available
<b>Indiana County</b>			
Indiana Regional Medical Center	Not available	Not available	Available
<b>Jefferson County</b>			
Penn Highlands Brookville	Not available	Not available	Available
Punxsutawney Area Hospital	Not available	Not available	Available
<b>Lackawanna County</b>			
CHS Moses Taylor Hospital - a Campus of Regional Hospital of Scranton	Not available	Available	Available
CHS Regional Hospital of Scranton	Not available	Available	Available
Geisinger Community Medical Center	Not available	Available	Available
Lehigh Valley Hospital - Dickson City	Not available	Available	Available
<b>Lancaster County</b>			
Lancaster General Hospital	Not available	Available	Available
Lancaster General Hospital Women & Babies	Not available	Available	Available
Penn State Health Lancaster Medical Center	Not available	Available	Available
UPMC Lititz	Not available	Not available	Available
WellSpan Ephrata Community Hospital	Not available	Available	Available
<b>Lawrence County</b>			
UPMC Jameson	Available	Available	Available
<b>Lebanon County</b>			
WellSpan Good Samaritan Hospital	Not available	Available	Available

Facilities	Together Blue EPO <sup>1</sup>	my Direct Blue EPO	my Blue Access PPO
<b>Lehigh County</b>			
Lehigh Valley Hospital - 17th Street	Not available	Available	Available
Lehigh Valley Hospital - Cedar Crest	Not available	Available	Available
Lehigh Valley Hospital - 1503 N. Cedar Crest	Not available	Available	Available
Lehigh Valley Reilly Children's Hospital	Not available	Available	Available
St. Luke's Hospital - Sacred Heart Campus	Not available	Not available	Available
<b>Luzerne County</b>			
CHS Wilkes-Barre General Hospital	Not available	Available	Available
Geisinger Wyoming Valley Medical Center	Not available	Available	Available
Lehigh Valley Hospital - Hazleton	Not available	Available	Available
<b>Lycoming County</b>			
Geisinger Jersey Shore Hospital	Not available	Available	Available
Geisinger Medical Center Muncy	Not available	Available	Available
UPMC Muncy	Not available	Available	Available
UPMC Williamsport	Not available	Available	Available
UPMC Williamsport Divine Providence Campus	Not available	Available	Available
<b>McKean County</b>			
Bradford Regional Medical Center	Not available	Available	Available
UPMC Kane	Available	Available	Available
<b>Mercer County</b>			
AHN Grove City	Available	Available	Available
Edgewood Surgical Hospital	Not available	Available	Available
Sharon Regional Medical Center	Not available	Available	Available
UPMC Horizon - Greenville	Available	Available	Available
UPMC Horizon - Shenango Valley	Available	Available	Available

<sup>1</sup> Together Blue EPO and Together Blue Virtual Choice EPO plans utilize the same network.

**\* We are always working to grow our network. Please visit the Provider Directory at [highmark.com](https://highmark.com) to confirm in-network status for facilities not listed here for 2024.**

Take a look at our provider directory to check if there are additional hospitals in your network. You can find the provider directory at [highmark.com](https://highmark.com). Scroll down to **Find a Doc or Rx**, select **Just Browsing**, enter your ZIP code and click **Continue**, then scroll down and click **Medical Care**.

## In-network facilities (continued)

Facilities	Together Blue EPO <sup>1</sup>	my Direct Blue EPO	my Blue Access PPO
<b>Mifflin County</b>			
Geisinger Lewistown Hospital	Not available	Not available	Available
<b>Monroe County</b>			
Lehigh Valley Hospital - Pocono	Not available	Available	Available
St. Luke's Hospital - Monroe Campus	Not available	Available	Available
<b>Montgomery County*</b>			
Einstein Medical Center Elkins Park	Not available	Available	Available
Einstein Medical Center Montgomery	Not available	Available	Available
Holy Redeemer Hospital	Not available	Available	Available
Jefferson Health - Abington Hospital	Not available	Available	Available
Jefferson Health - Abington-Lansdale Hospital	Not available	Available	Available
Main Line Health - Bryn Mawr Hospital	Not available	Available	Available
Main Line Health - Lankenau Medical Center	Not available	Available	Available
Prime Healthcare - Suburban Community Hospital	Not available	Available	Available
<b>Montour County</b>			
Geisinger Janet Weis Children's Hospital	Not available	Not available	Available
Geisinger Medical Center	Not available	Not available	Available
<b>Northampton County</b>			
Lehigh Valley Hospital - Highland Avenue	Not available	Available	Available
Lehigh Valley Hospital - Hecktown Oaks	Not available	Available	Available
Lehigh Valley Hospital - Muhlenberg	Not available	Available	Available
St. Luke's Hospital - Anderson Campus	Not available	Not available	Available
St. Luke's Hospital - Easton Campus	Not available	Not available	Available
St. Luke's University Hospital - Bethlehem	Not available	Not available	Available
<b>Northumberland County</b>			
Geisinger Shamokin Area Community Hospital	Not available	Not available	Available



Facilities	Together Blue EPO <sup>1</sup>	my Direct Blue EPO	my Blue Access PPO
<b>Philadelphia County*</b>			
Jefferson Health - Frankford Hospital	Not available	Available	Available
Jefferson Health - Methodist Hospital	Not available	Available	Available
Jefferson Health - Thomas Jefferson University Hospital	Not available	Available	Available
Jefferson Health - Torresdale Hospital	Not available	Available	Available
Penn Medicine - Hospital of the University of Pennsylvania	Not available	Available	Available
Penn Medicine - Penn Presbyterian Medical Center	Not available	Available	Available
Penn Medicine - Pennsylvania Hospital	Not available	Available	Available
Prime Healthcare - Roxborough	Not available	Available	Available
Temple Health - Fox Chase Cancer Center	Not available	Available	Available
Temple Health - Temple University Hospital	Not available	Available	Available
<b>Potter County</b>			
UPMC Cole	Available	Available	Available
<b>Schuylkill County</b>			
Geisinger St. Luke's Hospital	Not available	Available	Available
Lehigh Valley Hospital - Schuylkill E. Norwegian Street	Not available	Available	Available
Lehigh Valley Hospital - Schuylkill S. Jackson Street	Not available	Available	Available
St. Luke's Hospital - Miners Campus	Not available	Not available	Available
<b>Somerset County</b>			
Chan Soon-Shiong Medical Center at Windber	Not available	Available	Available
Conemaugh Meyersdale Medical Center	Not available	Available	Available
UPMC Somerset	Available	Available	Available
<b>Susquehanna County</b>			
Barnes-Kasson Hospital	Not available	Available	Available
Endless Mountains Health Systems	Not available	Available	Available

<sup>1</sup> Together Blue EPO and Together Blue Virtual Choice EPO plans utilize the same network.

**\* We are always working to grow our network. Please visit the Provider Directory at [highmark.com](https://highmark.com) to confirm in-network status for facilities not listed here for 2024.**

Take a look at our provider directory to check if there are additional hospitals in your network. You can find the provider directory at [highmark.com](https://highmark.com). Scroll down to **Find a Doc or Rx**, select **Just Browsing**, enter your ZIP code and click **Continue**, then scroll down and click **Medical Care**.

## In-network facilities (continued)

Facilities	Together Blue EPO <sup>1</sup>	my Direct Blue EPO	my Blue Access PPO
<b>Tioga County</b>			
UPMC Wellsboro	Not available	Available	Available
<b>Union County</b>			
Evangelical Community Hospital	Not available	Available	Available
<b>Venango County</b>			
UPMC Northwest	Available	Available	Available
<b>Warren County</b>			
Warren General Hospital	Not available	Available	Available
<b>Washington County</b>			
Advanced Surgical Hospital	Not available	Available	Available
AHN Canonsburg Hospital	Available	Available	Available
Penn Highlands Mon Valley	Not available	Available	Available
Washington Hospital	Not available	Available	Available
<b>Wayne County</b>			
Wayne Memorial Hospital	Not available	Available	Available
<b>Westmoreland County</b>			
AHN Hempfield Neighborhood Hospital	Available	Available	Available
Excelsa Health Frick Hospital	Not available	Available	Available
Excelsa Health Latrobe Hospital	Not available	Available	Available
Excelsa Health Westmoreland Hospital	Not available	Available	Available
<b>York County</b>			
OSS Orthopaedic Hospital	Not available	Not available	Available
UPMC Hanover	Not available	Not available	Available
UPMC Memorial	Not available	Not available	Available
WellSpan Surgery and Rehabilitation Hospital	Not available	Available	Available
WellSpan York Hospital	Not available	Available	Available

Facilities	Together Blue EPO <sup>1</sup>	my Direct Blue EPO	my Blue Access PPO
<b>Additional in-network facilities</b>			
Meritus Medical Center	Not available	Available	Available
The Johns Hopkins Hospital	Not available	Available	Available
University of Maryland Medical Center	Not available	Available	Available
UPMC Western Maryland	Not available	Available	Available
WVU Medicine - Garrett Regional Medical Center	Not available	Available	Available
AHN Westfield Memorial Hospital	Available	Available	Available
Guthrie Corning Hospital	Not available	Available	Available
Olean General Hospital	Not available	Available	Available
UR Medicine - Jones Memorial Hospital	Not available	Available	Available
UR Medicine - Strong Memorial Hospital	Not available	Available	Available
Cleveland Clinic	Not available	Available	Available
WVU Medicine - Children's Hospital	Not available	Available	Available
WVU Medicine - J.W. Ruby Memorial Hospital	Not available	Available	Available

<sup>1</sup> Together Blue EPO and Together Blue Virtual Choice EPO plans utilize the same network.

**\* We are always working to grow our network. Please visit the Provider Directory at [highmark.com](https://highmark.com) to confirm in-network status for facilities not listed here for 2024.**

Take a look at our provider directory to check if there are additional hospitals in your network. You can find the provider directory at [highmark.com](https://highmark.com). Scroll down to **Find a Doc or Rx**, select **Just Browsing**, enter your ZIP code and click **Continue**, then scroll down and click **Medical Care**.

---

# There's a whole lot of legalese around these plans. We put it all in one place for you.

---

## Important Benefit Details

**Non-Embedded Family Deductible:** For an agreement covering more than one (1) family member, the family deductible must be satisfied before the plan will begin to pay benefits for covered services for any covered family member. When the family deductible has been satisfied, the family deductible will be considered to have been satisfied for all family members, the plan will begin to pay benefits for covered services for all covered family members for the remainder of the benefit period (January 1, 2024– December 31, 2024). The family deductible can be met by one family member or a combination of members.

**Aggregate/Embedded Family Deductible Plans:** For an Agreement covering more than one (1) family member, as each Member satisfies their individual Deductible, the Plan will begin to pay benefits for Covered Services for that Member for the remainder of the Benefit Period (January 1, 2024– December 31, 2024), whether or not the entire family Deductible has been satisfied. When the family Deductible has been satisfied, the family Deductible will be considered to have been satisfied for all remaining covered family members. Not every individual member must meet the individual deductible for the family deductible to be met and no individual member may satisfy the entire family Deductible.

You are responsible for out-of-pocket costs each benefit period (January 1, 2024– December 31, 2024) up to the maximum amount shown. Thereafter, the plan pays 100% of the Plan Allowance. During the remainder of the benefit period. This amount does not include amounts in excess of the plan allowance.

Diagnostic Lab services include Laboratory and Pathology. Diagnostic Lab services require one copay (or, for some plans, coinsurance after deductible) per date of service and type of service.

Basic Diagnostic Services include Diagnostic X-ray, diagnostic medical and allergy testing. Basic diagnostic services require one copay (or, for some plans, coinsurance after deductible) per date of service and type of service. The copayment, if any, does not apply to diagnostic services prescribed for the treatment of Mental Health or Substance Abuse.

Advanced Imaging services include, but are not limited to, CAT scan, CTA, MRI, MRA, PET scan, and PET/CT Scan. Advanced Imaging services require one copay (or, for some plans, coinsurance after deductible) per date of service and type of service. The copayment, if any, does not apply to diagnostic services prescribed for the treatment of Mental Health or Substance Abuse.

Essential Formulary prescription drug cost covers a 90-day (Mail Order) or 31-day (Retail) supply. All plans have a four-tier closed formulary prescription drug structure.

Qualified High Deductible Health Plans may be coupled with a Health Savings Account (HSA). However, certain cost-sharing reductions (CSR) or plan variations of this plan that are offered through the Health Insurance Marketplace are not intended to be used with an HSA. If you have questions, please check with your financial advisor.

If you purchase coverage through an agent or broker, that individual may receive a commission. Bonus or incentive compensation may also apply. For more details visit [highmark.com](https://highmark.com) and enter your ZIP code. Select Plans followed by Shop Individual and Family Plans. Scroll to the bottom of the page and look for Highmark Individual Market Broker Compensation.

Please note that information regarding the Patient Protection and Affordable Care Act of 2010 (a.k.a. "PPACA", "Affordable Care Act", "ACA", and/or "Health Care Reform"), as amended, and/or any other law, does not constitute legal or tax advice and is subject to change based upon the issuance of new guidance and/or change in laws. This information is intended to provide general information only and does not attempt to give you advice that relates to your specific circumstances. The information regarding any health plan will be subject to the terms of the applicable health plan benefit agreement. Any review of

materials, request for information, or application does not obligate you to enroll for coverage. Please request the Outline of Coverage for details on benefits, conditions, and exclusions. Providing your information is voluntary.

To find more information about Highmark's benefits and operating procedures, such as accessing the drug formulary or using network providers, visit our website. Go to [highmark.com](https://highmark.com) and enter your ZIP code. Select Plans followed by Shop Individual and Family Plans. Scroll to the blue bar at bottom of the page. Look for Be Informed and select Quality Assurance. For a paper copy, call 1-855-873-4108 (TTY/TDD 711).

## Highmark Disclosures

Blue Distinction Centers (BDC) met overall quality measures for patient safety and outcomes, developed with input from the medical community. A Local Blue Plan may require additional criteria for providers located in its own service area; for details, contact your Local Blue Plan. Blue Distinction Centers+ (BDC+) also met cost measures that address consumers' need for affordable healthcare. Each provider's cost of care is evaluated using data from its Local Blue Plan. Providers in CA, ID, NY, PA, and WA may lie in two Local Blue Plans' areas, resulting in two evaluations for cost of care; and their own Local Blue Plans decide whether one or both cost of care evaluation(s) must meet BDC+ national criteria. Blue Distinction Total Care ("Total Care") providers have met national criteria based on provider commitment to deliver value-based care to a population of Blue members. Total Care+ providers also met a goal of delivering quality care at a lower total cost relative to other providers in their area. Program details and national criteria for BDC and BDC+ are displayed on [www.bcbs.com](https://www.bcbs.com). Individual outcomes may vary. For details on a provider's in-network status or your own policy's coverage, contact your Local Blue Plan and ask your provider before making an appointment. Neither Blue Cross Blue Shield Association nor any Blue Plans are responsible for noncovered charges or other losses or damages resulting from Blue Distinction or other provider finder information or care received from Blue Distinction or other providers.

BlueCard coverage is available for emergency or urgent care for all plans when you are away from home. Routine care is also covered for some plans. Consult your plan documents for additional information.

Blues On Call is a service mark of the Blue Cross Blue Shield Association.

Highmark Blue Cross Blue Shield is a Qualified Health Plan insurer in the Pennsylvania Insurance Exchange.

Blue Distinction is a registered mark of the Blue Cross Blue Shield Association, an association of independent Blue Cross Blue Shield Plans.

BlueCard is a registered mark of the Blue Cross Blue Shield Association, an association of independent Blue Cross Blue Shield Plans.

Blue365 is a registered mark of the Blue Cross Blue Shield Association.

You should confirm the network status of a provider prior to receiving services. You can call My Care Navigator at 1-888-Blue-428 to confirm if a doctor or facility will be in network in 2024.

Spring Health is a separate company that provides mental health care services. Spring Health does not provide Blue Cross and/or Blue Shield products or services and it is solely responsible for its services.

TytoCare is a separate company that provides the TytoHome device for certain eligible members of the health plan.

Sharecare, RealAge Test and AskMD are registered trademarks of Sharecare, LLC., an independent and separate company that provides a consumer care engagement platform for Highmark members. Sharecare is solely responsible for its programs and services, which are not a substitute for professional medical advice, diagnosis or treatment. Sharecare does not endorse any specific product service or treatment. Health care plans and the benefits thereunder are subject to the terms of the applicable benefit agreement.

My Care Navigator is a service mark of Highmark Inc.

TruHearing is a separate company that provides hearing aid devices and services that TruHearing is providing to Highmark or Highmark members.

All references to "Highmark" in this communication are references to Highmark Inc., an independent licensee of the Blue Cross Blue Shield Association, and/or to one or more of its affiliated Blue companies.

Insurance or benefit administration may be provided by or through Highmark Blue Cross Blue Shield or Highmark Coverage Advantage, both of which are independent licensees of the Blue Cross Blue Shield Association.

**Your plan may not cover all your health care expenses. Read your plan materials carefully to determine which health care services are covered. For more information, call the number on the back of your member ID card or, if not a member, call 866-459-4418.**

### Discrimination is Against the Law

The Claims Administrator/Insurer complies with applicable Federal civil rights laws and does not discriminate on the basis of race, color, national origin, age, disability, or sex, including sex stereotypes and gender identity. The Claims Administrator/Insurer does not exclude people or treat them differently because of race, color, national origin, age, disability, or sex assigned at birth, gender identity or recorded gender. Furthermore, the Claims Administrator/Insurer will not deny or limit coverage to any health service based on the fact that an individual's sex assigned at birth, gender identity, or recorded gender is different from the one to which such health service is ordinarily available. The Claims Administrator/Insurer will not deny or limit coverage for a specific health service related to gender transition if such denial or limitation results in discriminating against a transgender individual. The Claims Administrator/Insurer:

- Provides free aids and services to people with disabilities to communicate effectively with us, such as:
  - Qualified sign language interpreters
  - Written information in other formats (large print, audio, accessible electronic formats, other formats)
- Provides free language services to people whose primary language is not English, such as:
  - Qualified interpreters
  - Information written in other languages

If you need these services, contact the Civil Rights Coordinator.

If you believe that the Claims Administrator/Insurer has failed to provide these services or discriminated in another way on the basis of race, color, national origin, age, disability, or sex, including sex stereotypes and gender identity, you can file a grievance with: Civil Rights Coordinator, P.O. Box 22492, Pittsburgh, PA 15222, Phone: 1-866-286-8295, TTY: 711, Fax: 412-544-2475, email: CivilRightsCoordinator@highmarkhealth.org. You can file a grievance in person or by mail, fax, or email. If you need help filing a grievance, the Civil Rights Coordinator is available to help you. You can also file a civil rights complaint with the U.S. Department of Health and Human Services, Office for Civil Rights electronically through the Office for Civil Rights Complaint Portal, available at

<https://ocrportal.hhs.gov/ocr/portal/lobby.jsf>, or by mail or phone at:

U.S. Department of Health and Human Services  
200 Independence Avenue, SW  
Room 509F, HHH Building  
Washington, D.C. 20201  
1-800-368-1019, 800-537-7697 (TDD)

Complaint forms are available at <http://www.hhs.gov/ocr/office/file/index.html>.

### Pennsylvania, Delaware, West Virginia, and New York: 1-833-521-1424 (TTY: 711)

ATTENTION: If you speak English, assistance services, free of charge, are available to you. Call the number provided for your state of residence.

ATENCIÓN: Si habla español, tiene servicios de asistencia lingüística sin cargo. Llame al número correspondiente a su estado de residencia.

注意: 如果您说中文, 您可获得免费的语言援助服务。请拨打您所在州相应的电话号码。

توجه کنید: اگر به زبان فارسی صحبت می کنید، خدمات کمک زبانی به صورت رایگان در دسترس شما هستند. با شماره ارائه شده برای ایالت محل سکونتتان تماس بگیرید.

주의: 한국어(를) 사용하는 경우, 언어 지원 서비스를 무료로 이용할 수 있습니다. 거주하시는 주의 전화 번호로 문의하십시오.

ATANSYON: Si w pale Kreyòl Ayisyen, gen sèvis èd nan lang gratis ki disponib pou ou. Rele nimewo telefòn ki koresponn ak Eta kote w rete a.

ATTENZIONE: Se parla italiano, avrà a disposizione un servizio di assistenza linguistica gratuito. Chiami il numero fornito per il suo stato di residenza.

אכטונג: אויב איר רעדט אידיש, זענען שפראך הילף סערוויסעס, פריי פון אפצאל, אוועילעבל פאר אייך. רופט די נומער וואס איז צוגעשטעלט פאר אייער סטעיט וואו איר וואוינט.

মনোযোগ দিন: আপনি যদি বাংলা ভাষায় কথা বলেন, তাহলে আপনার জন্য বিনামূল্যে ভাষা সহায়তা পরিষেবা উপলব্ধ রয়েছে। আপনি বসবাসরত রাজ্যের জন্য দেওয়া নম্বরে ফোন করুন।

تنبيه: إذا كنت تتحدث العربية، فإن خدمات المساعدة اللغوية متاحة لك مجاناً. اتصل بالرقم المقدم للولاية التي تقیم فيها.

UWAGA: jeżeli posługuje się Pan/Pani językiem polsku, udostępniamy bezpłatne usługi wsparcia językowego. Prosimy zadzwonić pod numer podany dla stanu, w którym Pan/Pani mieszka.

ATTENTION : si vous parlez français, des services d'assistance linguistique sont disponibles gratuitement. Appelez le numéro de téléphone pour votre État de résidence.

توجه دیں: اگر آپ اردو بولتے ہیں، تو لسانی مدد کی خدمات آپ کے لیے مفت دستیاب ہیں۔ اپنی رہائش والی ریاست کے لیے فراہم کردہ نمبر پر کال کریں۔

CHÚ Ý: Nếu quý vị nói Tiếng Việt, dịch vụ hỗ trợ ngôn ngữ miễn phí được cung cấp sẵn cho quý vị. Gọi số được cung cấp cho tiểu bang cư trú của quý vị.

PAUNAWA: Kung nagsasalita ka ng Tagalog, magagamit mo ang mga serbisyo ng tulong sa wika nang walang bayad. Tawagan ang numerong ibinigay para sa estadong tinitirhan mo.

ΠΡΟΣΟΧΗ: Αν μιλάτε Ελληνικά, έχετε πρόσβαση σε δωρεάν υπηρεσίες γλωσσικής βοήθειας. Καλέστε τον αριθμό που παρέχεται για την περιοχή σας.

# Ready to (en)roll?

## Cool. Here's how to do it:

- By phone: 1-833-796-0888
- Online: [Highmark.com](https://www.Highmark.com)
- By contacting your agent or broker
- At a Highmark Direct store near you

**The Pointe at North Fayette**  
218 Summit Park Drive  
North Fayette, PA 15275  
412-544-4900

**McKnight Siebert  
Shopping Center**  
4885 McKnight Road  
Pittsburgh, PA 15237  
412-544-5400

**Norman Centre II**  
1775 North Highland Road  
Pittsburgh, PA 15241  
412-544-5267

**Kingswood Plaza**  
5753 Peach Street  
Erie, PA 16509  
814-528-9600

**4008 William Penn Highway**  
Monroeville, PA 15146  
412-544-5420

To schedule an appointment at a Highmark Direct store near you, visit [HighmarkDirectAppointments.com](https://www.HighmarkDirectAppointments.com).



Because Life.™